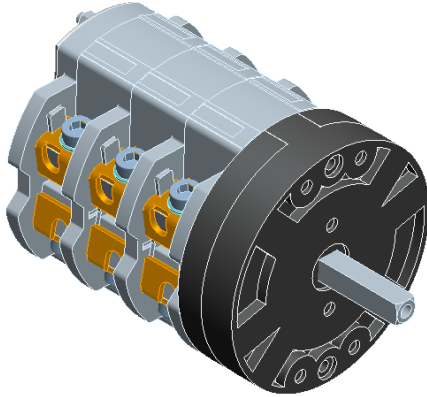


Cod. CA100348BPL4

Standard and Approvals

- Cam switch according to IEC/EN 60947-3
- UL508 approved
- Suitable for manual motor control



(purely indicative picture)

Technical characteristics

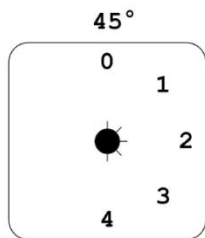
- IP00 Protection degree
- Rated operational current I_e : 115A
- Rated thermal current I_{th} : 115A
- Rated insulation voltage U_i : 690V
- Panel mounting
- Switching angle: 45°
- Self-extinguishing thermosetting/thermoplastic class V2 housing
- Assembled with metal shaft and threaded stud bolts to ensure maximum operating reliability
- Positive opening double break contacts, made of silver and alloy



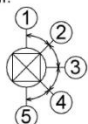
Technical characteristics: Plate and knob

- Transparent plate 130x130mm and black knob
- IP40 Protection degree
- Fixing with 4 screws at 30x90mm

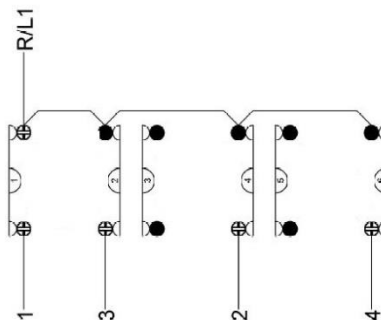
Positions



Posizioni:



Electrical scheme



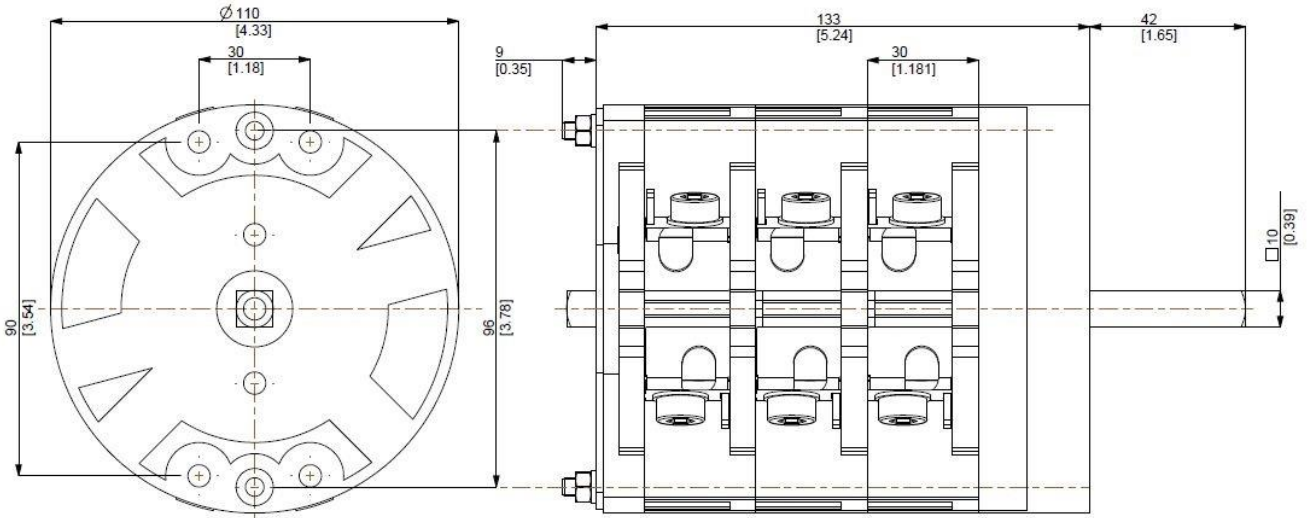
Electrical function

					X									5	
		X												4	
			X											3	
X														2	
														1	
1	3	5	7	9	11	13	15								
2	4	6	8	10	12	14	16					CONTACTS			
1	2	3	4									LAYERS			

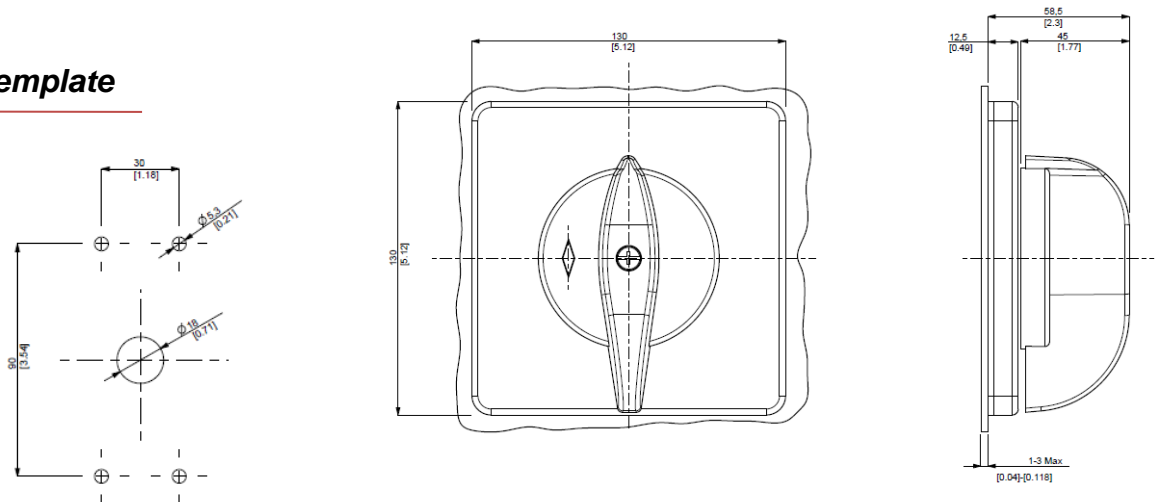
Cod. CA100348BPL4

measures in mm (in)

Dimensions



Drilling template



Cod. CA100348BPL4

Technical data IEC 947-3 EN 60947-3				
Rated insulation voltage	Ui	V	690	
Rated operating voltage	Ue	V	690	
Rated impulse withstand voltage	Uimp	kV	6	
Rated thermal current for open switch	Ith	A	115	
Rated thermal current for enclosed switch	Ithe	A	100	
Rated operation frequency		Hz	50/60	
Power dissipation for each pole		W	4,7	
Rated operating current				
AC-21A Switching resistive loads, including moderate overloads	Ie	A	115/110 ⁵	
AC-22A Switching of mixed resistive and inductive loads, including moderate overloads	Ie	A	110	
AC-20A Connecting and disconnecting under no loads conditions			-	
Rated operating power				
AC-23A Switching of motor loads or other highly inductive loads 3 phase - 3 pole	230V	Kw (A)	30 (95)	
	400V	Kw (A)	45 (85)	
	500V	Kw (A)	30 (40)	
	690V	Kw (A)	-	
AC-23A Switching of motor loads or other highly inductive loads 1 phase - 2 pole	110V	Kw (A)	9 (102)	
	230V	Kw (A)	15 (82)	
AC-3 Squirrel cage motors: starting, swtiching off motors during running 3 phase - 3 pole	230V	Kw (A)	22 (70)	
	400V	Kw (A)	37 (67)	
	500V	Kw (A)	30 (40)	
	690V	Kw (A)	-	
AC-3 Squirrel cage motors: starting, swtiching off motors during running 1 phase - 2 pole	110V	Kw (A)	7,5 (85)	
	230V	Kw (A)	11 (60)	
	400V	Kw (A)	-	
AC-4 Squirrel cage motors: starting, pluggign, inching	230V	Kw (A)	7,5 (85)	
	400V	Kw (A)	11 (20)	
AC-15 Control of a.c electromagnetic loads	230V	A	-	
	400V	A	-	
Rated breaking capability in AC-23A (cos φ=0,45)	230V	A	760	
	400V	A	680	
Short circuit protection				
Rated short time withstand current	Icw	A	1500	
Rated short-circuit make capacity	Icm	A	3000	
Rated conditional short-circuit current	-	kA	15	
With fuses class gG	500V	A	125	
Technical data UL/CSA				
Rated operating voltage	Ue	UL/CSA V	600/600	
General use current	Ie	UL/CSA A	125/100	
Short circuit rating @600Vac		Arms	-	
Fuse size (Class RK5, 600Vac, 200kA A.I.C.)		A	-	
Rated operating power				
1 phase - 2 pole	120V	Hp (A)	10 (100)/5	
	240V	Hp (A)	15 (68)/12	
3 phase - 3 pole	200V	Hp (A)	20 (62,1)/-	
	240V	Hp (A)	25 (68)/24	
	480V	Hp (A)	40(52)/50	
	600V	Hp (A)	50(52)/65	
Mechanical characteristics				
Mechanical life		Cycles x 10 ⁶	0,3	
		Cycles/hr	120	
Connection according to IEC 9471-1 and EN 50947-1 (Power contacts)				
Connecting capability	With flexible wires	Min-Max	mm ²	10-25
		Min-Max	AWG	10-3
	With solid wires	Min-Max	mm ²	10-25
Connection terminal screw dimensions		Type	M8	
Screw tightening torque		Nm	2,8	
Protection degree IEC 529 EN 60529				
Terminals		IP	00	
Ambient conditions				
Operating ambient temperature		°C	-25 ÷ +55	
Storage ambient temperature		°C	-30 ÷ +70	
Withstand to constant humid according to IEC 60068			2-78	
Withstand to cyclic humid according to IEC 60068			2-30	

Notes:
⁵ = at 500V