

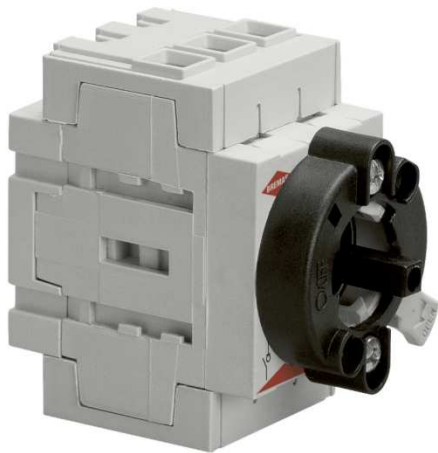
Disconnecter switches

DS Series – Datasheet



Bremas Ersce SpA
Via Castellazzo, 9 - 20040 Cambiago (MI)
Tel. +39.02.95651611 Fax +39.02.95651639
www.bremasersce.it - info@bremasersce.it
ISO 9001 Certified Quality System

Cod. DS0203GDV4



Technical characteristics: Body

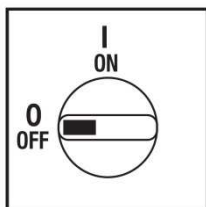
- ON-OFF 3 pole
- IP20 Protection degree
- Rated operational current I_n : 20A
- Rated thermal current I_{th} : 25A
- Rated insulation voltages U_i : 800V
- Rear Mounting
- Fixing at single hole $\varnothing 22\text{mm}$
- Switching angle: 90°
- Class V2 self-extinguishing thermoplastic housing
- Positive opening double break contacts, silver alloy made



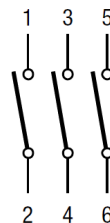
Technical characteristics: Plate and knob

- Grey plate 48x48mm and black knob
- Protection degree IP66
- Fixing at single hole $\varnothing 22\text{mm}$

Plate and position



Electrical scheme



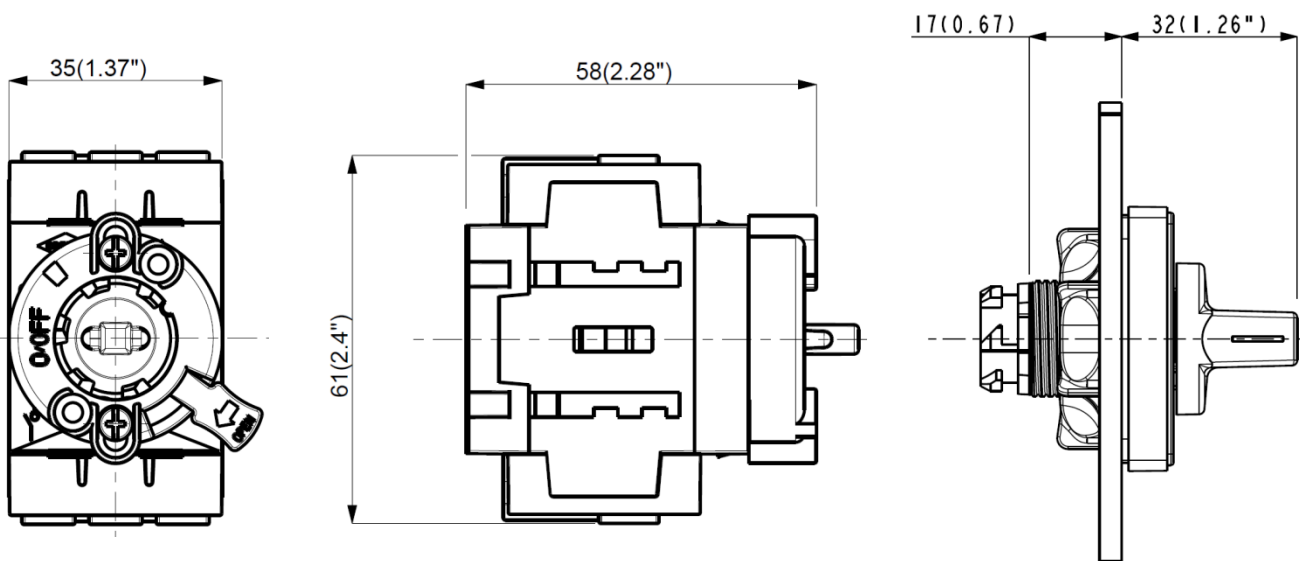
Disconnecter switches DS Series – Datasheet



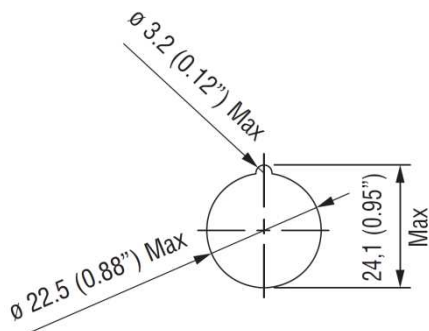
Bremas Ersce SpA
Via Castellazzo, 9 - 20040 Cambiago (MI)
Tel. +39.02.95651611 Fax +39.02.95651639
www.bremasersce.it - info@bremasersce.it
ISO 9001 Certified Quality System

Cod. DS0203GDV4

Dimensions measures in mm (in)



Drilling templates measures in mm (in)



Disconnecter switches

DS Series – Datasheet



Bremas Erscé SpA
Via Castellazzo, 9 - 20040 Cambiago (MI)
Tel. +39.02.95651611 Fax +39.02.95651639
www.bremaserce.it - info@bremaserce.it

ISO 9001 Certified Quality System

Cod. DS0203GDV4

				DS020
Technical data IEC 947-3 EN 60947-3				
Rated insulation voltage	Ui	V		800
Rated operational voltage	Ue	V		800
Rated impulse withstand voltage	Uimp	kV		8
Rated thermal current for open switch	Ith	A		25
Rated thermal current for enclosed switch	Ithe	A		25
Rated operational frequency		Hz		50/60
Power dissipation for each pole		W		0,6
Rated operational current				
AC-21A Switching resistive loads, including moderate overloads 3P/3P+N	690V	Ie	A	20
AC-22A Switching of mixed resistive and inductive loads, including moderate overloads 3P/3P+N	690V	Ie	A	20
Rated operational power				
AC-23A Switching of motor loads or other highly inductive loads 3 phase - 3 pole	400V	Kw (A)		9 (18)
	690V	Kw (A)		9 (13)
AC-3 Squirrel cage motors: starting, switching off motors during running 3 phase - 3 pole	400V	Kw (A)		5,5 (10)
	690V	Kw (A)		5,5 (6)
Rated breaking capability in AC-23A (cos φ=0,45)	400V	A		144
	690V	A		104
Short circuit protection				
Rated short time withstand current	Icw	A		300
Rated short-circuit make capacity	Icm	A		750
Rated conditional short-circuit current		kA		10
With fuses class gG	500V	A		20
Mechanical life (120 cycles/hour)	Mil.Man			
Connecting capability with flexible wires	Min-Max	mm ²		1,5-10
Connecting capability with solid wires	Min-Max	mm ²		1,5-16
Connection terminal screw dimensions				M4
Screw tightening torque		Nm		1,7
Technical data UL/CSA (sec. UL508)				
General use voltage	Ue	V		600
General use current	600Vac	Ie	A	20
Rated operating power				
1 phase - 2 pole	120V	Hp/FLA		1/-
	240V	Hp/FLA		2/-
	200V	Hp/FLA		-/-
3 phase - 3 pole	240V	Hp/FLA		5/15,2
	480V	Hp/FLA		10/14
	600V	Hp/FLA		15/17
Line protection fuses (Class RK5, 600Vac, 200kA A.I.C.)		A		20
Short Circuit Rating@600Vac		A		-
		kA		5
Auxiliary contacts designation				AC Voltage, "Heavy Pilot Duty" (A600)
Mechanical characteristics				
Connecting capability with flexible wires	Min-Max	AWG		16/08
Connecting capability with solid wires	Min-Max	AWG		16/06
Screw tightening torque		ib.in		12
Protection degree IEC 529 EN 60529				
Terminals				IP20
Handles				IP66
Ambient conditions				
Operational ambient temperature			°C	-25 ÷ +55
Storage ambient temperature			°C	-25 ÷ +55
Withstand to constant humid according to IEC 60068				sec. IEC 60068-2-78
Withstand to cycling humid according to IEC 60069				sec. IEC 60068-2-30
Auxiliary contacts				DSC040N0_DSC040NC_
Rated insulation voltage	Ui	V		800
Rated thermal current for open switch	Ith	A		10
AC-15 Control of a.c electromagnetic loads	230V	A		3

Standard

IEC/EN 60947-3; UL508

Approvals



© 2014 Copyright Bremas Erscé. Subject to change without notice and errors excepted. Data reported in this paper are carefully checked and represent typical values of series production. The descriptions of the device and its applications, contexts of use, details of external controls, information on installation and operation are provided to the best of our knowledge. In any case, this does not mean that the features described may derive legal responsibilities that extend beyond the "Terms and Conditions" of Bremas Erscé. The customer / user is not absolved from the obligation to examine our information and recommendations and the relevant technical regulations before using the products for their own purposes.