

# Cam switches

## CA Series – Datasheet



**Bremas Ersce SpA**  
 Via Castellazzo, 9 - 20040 Cambiago (MI)  
 Tel. +39.02.95651611 Fax +39.02.95651639  
 www.bremasersce.it - info@bremasersce.it  
 ISO 9001 Certified Quality System

Cod. CA01200G3BL6



### Technical characteristics: Body

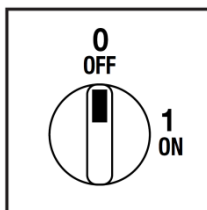
- ON-OFF switch 3 pole
- IP00 Protection degree
- Rated operational current In: 12A
- Rated thermal current Ith: 16A
- Rated insulation voltage Ui: 690V
- Base Mounting
- Fixing: - 2 screw  
- DIN rail
- Number of elements: 2
- Switching angle: 90°
- Class V2 self-extinguishing thermoplastic housing
- Assembled with metal shaft and threaded stud bolts to ensure maximum operating reliability
- Positive opening double break contacts, silver alloy made.



### Technical characteristics: Plate and knob

- Yellow plate 67x67mm and red padlockable knob (max. 3 padlocks)
- IP66 Protection degree
- Fixing: - 2 screw at 28mm vertical  
- 2 screw at 32mm horizontal

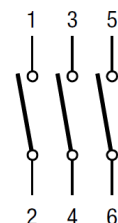
### Plate and positions



### Electrical function

	<b>0</b>								CR	90°
	<b>1</b>	X	X	X					CA	
Contact		1	2	3	4	5	6	7	8	
Element		<b>1</b>			<b>2</b>					Angle

### Electrical scheme



# Cam switches

## CA Series – Datasheet



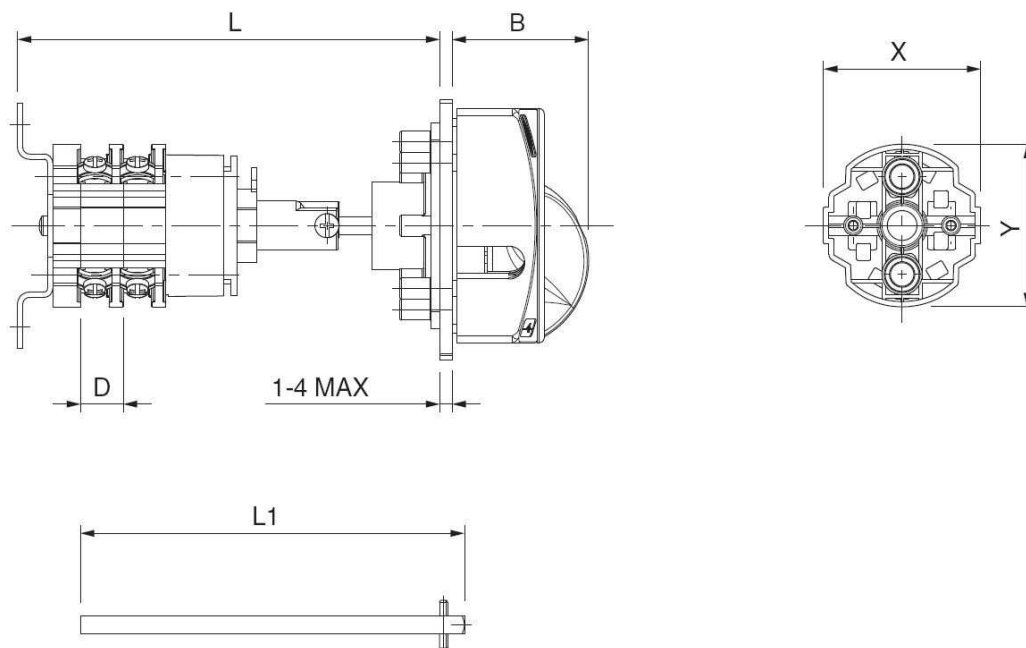
**Bremas Erscé SpA**  
Via Castellazzo, 9 - 20040 Cambiago (MI)  
Tel. +39.02.95651611 Fax +39.02.95651639  
www.bremasersce.it - info@bremasersce.it

ISO 9001 Certified Quality System

**Cod. CA01200G3BL6**

### Dimensions

measures in mm (in)



X	Y	D	B	L1	L	
					L min	L max
45 (1.77")	46,5 (1.83")	12,2 (0.48")	39 (1.54")	175 (6.89")*	114 (4.49")	258 (10.16")
					300 (11.81")	383 (15.08")
					500 (19.69")	583 (22.95")

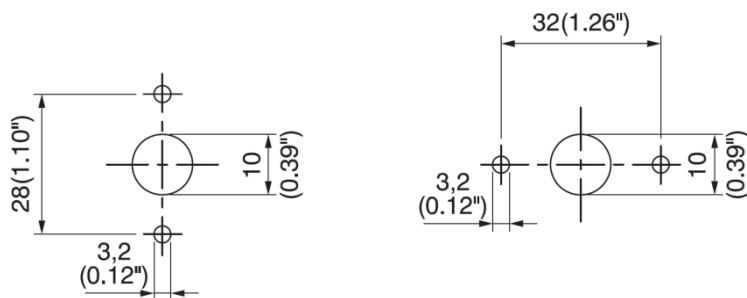
L: Overall length (min\*\*/max) for different shaft lengths (L1)

\* Standard shaft, bundled

\*\* Minimum length is obtainable by cutting the shafts

### Drilling templates

measures in mm (in)



# Cam switches

## CA Series – Datasheet



**Bremas Ersce SpA**  
Via Castellazzo, 9 - 20040 Cambiago (MI)  
Tel. +39.02.95651611 Fax +39.02.95651639  
www.bremasersce.it - info@bremasersce.it

ISO 9001 Certified Quality System

### Cod. CA01200G3BL6

			CR012
<b>Technical data IEC 947-3 EN 60947-3</b>			
Rated insulation voltage	Ui	V	690
Rated operating voltage	Ue	V	690
Rated impulse withstand voltage	Uimp	kV	6
Rated thermal current for open switch	Ith	A	16
Rated operation frequency		Hz	50
Power dissipation for each pole		W	0,27
<b>Rated operating current</b>			
AC-21A Switching resistive loads, including moderate overloads	Ie	A	12
AC-22A Switching of mixed resistive and inductive loads, including moderate overloads	Ie	A	12
AC-20A Connecting and disconnecting under no loads conditions			-
<b>Rated operating power</b>			
AC-23A Switching of motor loads or other highly inductive loads 3 phase - 3 pole	230V	Kw (A)	3 (9)
	400V	Kw (A)	4 (9)
	500V	Kw (A)	-
	690V	Kw (A)	-
AC-23A Switching of motor loads or other highly inductive loads 1 phase - 2 pole	110V	Kw (A)	0,75 (8,5)
	230V	Kw (A)	1,5 (8,5)
AC-3 Squirrel cage motors: starting, switching off motors during running 3 phase - 3 pole	230V	Kw (A)	2,2 (7)
	400V	Kw (A)	3,5 (7)
	500V	Kw (A)	-
	690V	Kw (A)	-
AC-3 Squirrel cage motors: starting, switching off motors during running 1 phase - 2 pole	110V	Kw (A)	0,37 (4)
	230V	Kw (A)	1,1 (6)
	400V	Kw (A)	-
AC-4 Squirrel cage motors: starting, plugging, inching	230V	Kw (A)	-
	400V	Kw (A)	-
AC-15 Control of a.c electromagnetic loads	230V	A	4
	400V	A	3
Rated breaking capability in AC-23A (cos φ=0,45)	230V	A	72
	400V	A	72
<b>Short circuit protection</b>			
Rated short time withstand current	Icw	A	150
Rated short-circuit make capacity	Icm	A	-
Rated conditional short-circuit current		kA	4
With fuses class gG	500V	A	16
<b>Technical data UL/CSA</b>			
Rated insulation voltage	Ui	UL/CSA V	600/-
Rated operating voltage	Ue	UL/CSA V	600/-
General use current	Ie	UL/CSA A	12
Short circuit rating @600Vac		Arms	5000
Fuse size (Class RK5, 600Vac, 200kA A.I.C.)		A	60
<b>Rated operating power</b>			
1 phase - 2 pole	120V	Hp (A)	0,5 (9,8)
	240V	Hp (A)	1,5 (10)
3 phase - 3 pole	200V	Hp (A)	1,5 (6,9)
	240V	Hp (A)	2 (6,8)
	480V	Hp (A)	3 (4,8)
	600V	Hp (A)	5 (6,1)
<b>Mechanical characteristics</b>			
Mechanical life		Cicli x 106	2
		Cicli/ora	120
<b>Connection according to IEC 9471-1 and EN 50947-1</b>			
Connecting capability	Min-Max	mm2	2x1,5-4
	With flexible wires	Min-Max	AWG
	With solid wires	Min-Max	mm2
Connection terminal screw dimensions		Tipo	M3,5
Screw tightening torque		Nm	1
<b>Protection degree IEC 529 EN 60529</b>			
Terminals		IP	20
<b>Ambient conditions</b>			
Operating ambient temperature		°C	-25 ÷ +55
Storage ambient temperature		°C	-30 ÷ +70
Withstand to constant humid according to IEC 60068			2-78
Withstand to cyclic humid according to IEC 60068			2-30

**Standard**

IEC/EN 60947-3; UL508

**Approvals**

