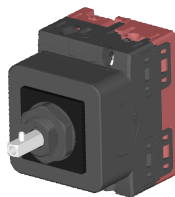


## DP Series

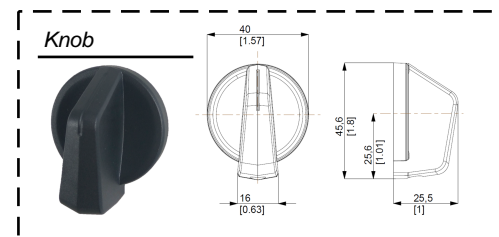
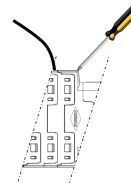


**Bremas Ercoe SpA**  
Via castellazzo 9 - 20040 Cambiago (MI)  
Tel +39 02 95651611 Fax +39 02 95651639  
www.bremas.eu info@bremas.it  
ISO 9001 Certified Quality System

## DP10012120ALMVU5



*Screwdriver orientation  
for terminals*



### Technical data according to IEC 60947-3:2015/A2 AnnexD

Utilization category			PV1 (DC21B)	PV2
Rated operational voltage	Ue	V dc	1000	1000
Rated operational current	Ie	A dc	12	4
Rated operational voltage (second rating)	Ue	V dc	750	750
Rated operational current (second rating)	Ie	A dc	25	10
Rated operational voltage (third rating)	Ue	V dc	600	600
Rated operational current (third rating)	Ie	A dc	32	16
Rated thermal current	Ith	A	50	
DC Poles		Nr.	2	
Rated conditional short-circuit current			5kA	
Rated insulation voltage	Ui	V dc	1.500	
Rated impulse withstand voltage	Uimp	kV	8	
Rated short-time withstand current (1s)	Icw	A	780	
Rated short-circuit making capacity	Icm	kA	1,4	
Power loss per layer at 20A/50A		W	0,2/1,25	
Max fuse size for short circuit protection	gPV	A	50	

## Mechanical characteristics

Type of mounting			Panel mounting Head Up Screws M16 L=12mm fixing
Layers		Nr.	2
Screwdriver orientation for terminals			Head up
External metal parts (Screws, shaft)			Stainless steel
Terminal capacity with flexible/solid wires	Max	mm <sup>2</sup> AWG	2x6 2x10
Terminal capacity with fork terminals	Max	mm <sup>2</sup> AWG	1x16 1x6
Thread dimensions for terminal screws			M4
Terminal screws tightening torque		Nm	1,7 ± 10%
Tightening torque panel mounting nut		Nm	2+/-10%
Tightening torque M3 screw in the actuator		Nm	0,6 ± 10%
Panel tickness		mm	Max 4
Shaft protrusion		mm	27
Actuator operation forces		Nm	1,5
Net Weight		g	155

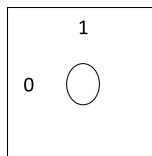
## Protection degree IEC 529 EN 60529

Switch IP terminal			IP20
Switch IP rating mounted on panel			IP66

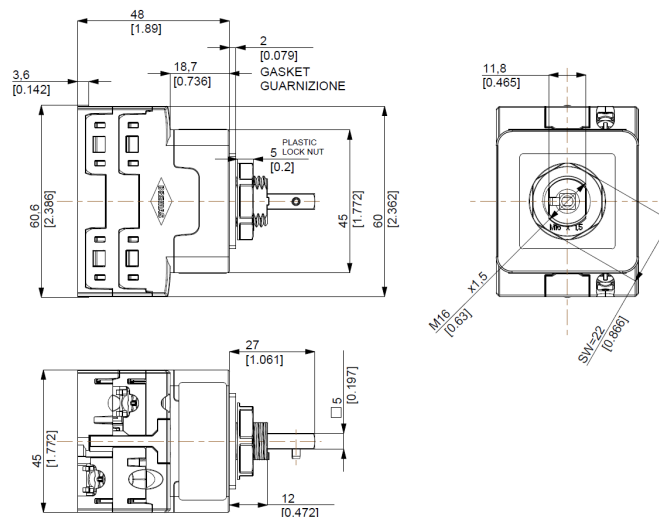
## Ambient conditions

Pollution degree ins.		2
Operational ambient temperature		-40°C ÷ +70°C
Storage ambient temperature		-40°C ÷ +85°C
Damp heat test IEC60068-2-30		90-100% RH at +55 °C
Knob		UV resistant

### Positions



### Dimensions



## Drilling Templates

