

DC Disconnect Switch
DM Series

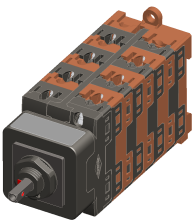


Bremas Ersce SpA
Via castellazzo 9 - 20040 Cambiago (MI)
Tel +39 02 96651611 Fax +39 02 96651639
www.bremas.eu info@bremas.it
ISO 9001 Certified Quality System

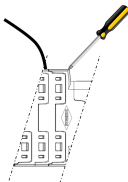
DM10020420AVMVU6



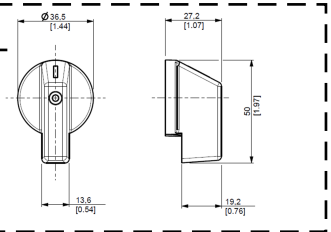
| Technical data according to IEC 60947-3:2015/A2 AnnexD | | | |
|--|------|------------------------|--|
| Utilization category | | PV1 (DC21B) | PV2 |
| Rated operational voltage | Ue | V dc | 1100 |
| Rated operational current | Ie | A dc | 12 |
| Rated operational voltage (second rating) | Ue | V dc | 1000 |
| Rated operational current (second rating) | Ie | A dc | 20 |
| Rated operational voltage (third rating) | Ue | V dc | 750 |
| Rated operational current (third rating) | Ie | A dc | 32 |
| Rated operational voltage (fourth rating) | Ue | V dc | 700 |
| Rated operational current (fourth rating) | Ie | A dc | 40 |
| Rated operational voltage (fifth rating) | Ue | V dc | 500 |
| Rated operational current (fifth rating) | Ie | A dc | 50 |
| Rated thermal current | Ith | A | 50 |
| DC Poles | | Nr. | 8 |
| Rated conditional short-circuit current | | | 5kA |
| Rated insulation voltage | Ui | V dc | 1.500 |
| Rated impulse withstand voltage | Uimp | kV | 8 |
| Rated short-time withstand current (1s) | Icw | A | 780 |
| Rated short-circuit making capacity | Icm | kA | 1,4 |
| Power loss per layer at 20A/50A | | W | 0,2/1,25 |
| Max fuse size for short circuit protection | gPV | A | 50 |
| Mechanical characteristics | | | |
| Type of mounting | | | Double mounting (Head Up Screws) panel with M16 L=12mm fixing /Back for DIN rail |
| Layers | | Nr. | 8 |
| Screwdriver orientation for terminals | | | Head up |
| External metal parts (Screws, shaft) | | | Stainless steel |
| Terminal capacity with flexible/solid wires | Max | mm ² AWG | 2x6 2x10 |
| Terminal capacity with fork terminals | Max | mm ² AWG | 1x16 1x6 |
| Thread dimensions for terminal screws | | | M4 |
| Terminal screws tightening torque | | Nm | 1,7 ± 10% |
| Tightening torque panel mounting nut | | Nm | 2+/-10% |
| Tightening torque M3 screw in the actuator | | Nm | 0,6 ± 10% |
| Panel tickness | | mm | Max 4 |
| Shaft protrusion | | mm | 27 |
| Actuator operation forces | | Nm | 1,5 |
| Net Weight | | g | 380 |
| Protection degree IEC 529 EN 60529 | | | |
| Switch IP terminal | | | IP20 |
| Switch IP rating mounted on panel | | | IP66 |
| Ambient conditions | | | |
| Pollution degree ins. | | | 2 |
| Operational ambient temperature | | | -40°C ÷ +70°C |
| Storage ambient temperature | | | -40°C ÷ +85°C |
| Damp heat test IEC60068-2-30 | | | 90-100% RH at +55 °C |
| Knob | | | UV resistant |



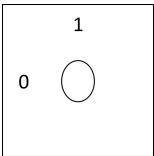
Screwdriver orientation
for terminals



Knob



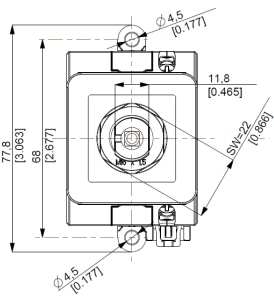
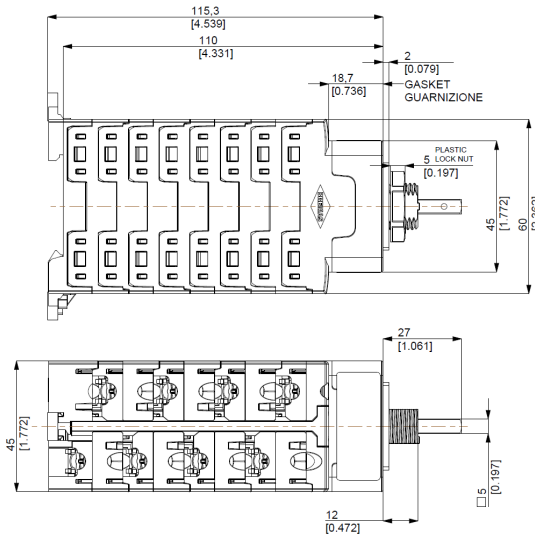
Positions



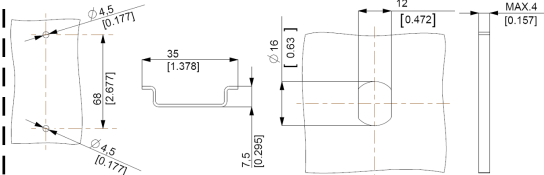
Electrical Diagram

| Layer | 1 | 2 | 3 | 4 | 5 | 6 | 7 | 8 | 9 | 10 | 11 | 12 | 13 | 14 | 15 | 16 |
|---------|----|----|----|----|----|----|----|----|---|----|----|----|----|----|----|----|
| Marking | -4 | +4 | -3 | +3 | -2 | +2 | -1 | +1 | | | | | | | | |
| | | | | | | | | | | | | | | | | |
| Marking | -4 | +4 | -3 | +3 | -2 | +2 | -1 | +1 | | | | | | | | |
| 0/OFF | X | X | X | X | X | X | X | X | | | | | | | | |
| I/ON | X | X | X | X | X | X | X | X | | | | | | | | |

Dimensions



Drilling Templates



©2017 Copyright Bremas Ersce. Subject to change without notice and errors excepted. Data reported in this paper are carefully checked and represent typical values of series production. The descriptions of the device and its applications, contexts of use, details of external controls, information on installation and operation are provided to the best of our knowledge. In any case, this does not mean from the features described it may derive legal responsibilities that extend beyond the "Terms and Conditions of sales" of Bremas Ersce. The customer / user must examine our information and recommendations and the relevant technical regulations before using the products its own purpose.