

DC Disconnect Switch  
DP Series



Bremas Ersee SpA  
Via castellazzo 9 - 20040 Cambiago (MI)  
Tel +39 02 96651611 Fax +39 02 96651639  
www.bremas.eu info@bremas.it  
ISO 9001 Certified Quality System

DP10012320ALMKU6

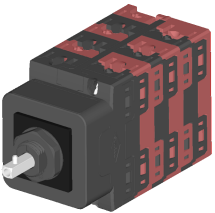


| Technical data according to IEC 60947-3:2015/A2 AnnexD |      |             |          |
|--|------|-------------|----------|
| Utilization category                                   |      | PV1 (DC21B) | PV2      |
| Rated operational voltage                              | Ue   | V dc        | 1000     |
| Rated operational current                              | Ie   | A dc        | 12       |
| Rated operational voltage (second rating)              | Ue   | V dc        | 750      |
| Rated operational current (second rating)              | Ie   | A dc        | 25       |
| Rated operational voltage (third rating)               | Ue   | V dc        | 600      |
| Rated operational current (third rating)               | Ie   | A dc        | 32       |
| Rated thermal current                                  | Ith  | A           | 50       |
| DC Poles   |      | Nr.         | 6        |
| Rated conditional short-circuit current                |      |             | 5kA      |
| Rated insulation voltage                               | Ui   | V dc        | 1.500    |
| Rated impulse withstand voltage                        | Uimp | kV          | 8        |
| Rated short-time withstand current (1s)                | Icw  | A           | 780      |
| Rated short-circuit making capacity                    | Icm  | kA          | 1,4      |
| Power loss per layer at 20A/50A                        |      | W           | 0,2/1,25 |
| Max fuse size for short circuit protection             | gPV  | A           | 50       |

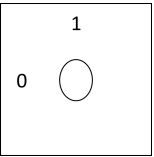
| Mechanical characteristics                  |     |                        |  |
|---|-----|------------------------|--|
| Type of mounting                            |     |                        | Panel mounting Head Up Screws M16<br>L=12mm fixing |
| Layers                                      |     | Nr.                    | 6  |
| Screwdriver orientation for terminals       |     |                        | Head up  |
| External metal parts (Screws, shaft)        |     |                        | Stainless steel                                    |
| Terminal capacity with flexible/solid wires | Max | mm <sup>2</sup><br>AWG | 2x6<br>2x10  |
| Terminal capacity with fork terminals       | Max | mm <sup>2</sup><br>AWG | 1x16<br>1x6  |
| Thread dimensions for terminal screws       |     |                        | M4   |
| Terminal screws tightening torque           |     | Nm                     | 1,7 ± 10%  |
| Tightening torque panel mounting nut        |     | Nm                     | 2+/-10%  |
| Tightening torque M3 screw in the actuator  |     | Nm                     | 0,6 ± 10%  |
| Panel tickness                              |     | mm                     | Max 4  |
| Shaft protrusion                            |     | mm                     | 27   |
| Actuator operation forces                   |     | Nm                     | 1,5  |
| Net Weight                                  |     | g                      | 320  |

| Protection degree IEC 529 EN 60529 |  |  |      |
|------------------------------------|--|--|------|
| Switch IP terminal                 |  |  | IP20 |
| Switch IP rating mounted on panel  |  |  | IP66 |

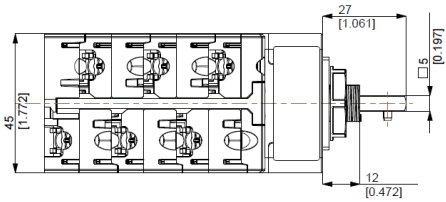
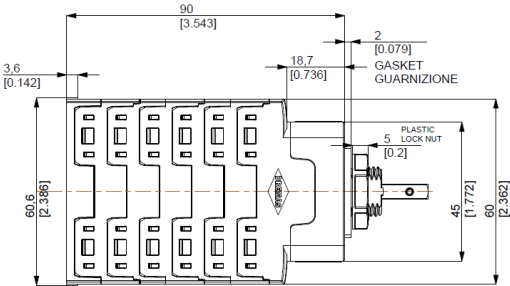
| Ambient conditions              |  |  |                      |
|---------------------------------|--|--|----------------------|
| Pollution degree ins.           |  |  | 2                    |
| Operational ambient temperature |  |  | -40°C ÷ +70°C        |
| Storage ambient temperature     |  |  | -40°C ÷ +85°C        |
| Damp heat test IEC60068-2-30    |  |  | 90-100% RH at +55 °C |
| Plate + Knob                    |  |  | UV resistant         |



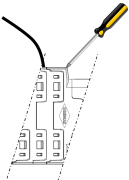
Positions



Dimensions

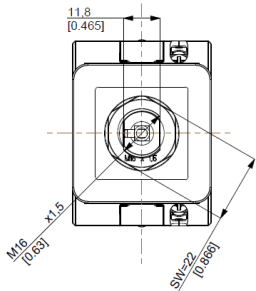
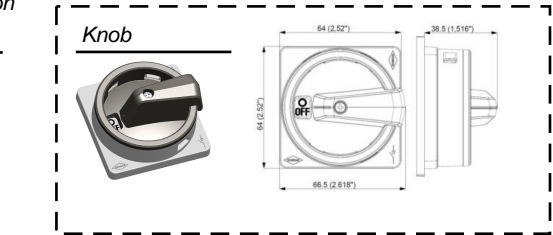


Screwdriver orientation  
for terminals



Electrical Diagram

| Layer   | 1  | 2  | 3  | 4  | 5  | 6  | 7 | 8 | 9 | 10 | 11 | 12 | 13 | 14 | 15 | 16 |
|---------|----|----|----|----|----|----|---|---|---|----|----|----|----|----|----|----|
| Marking | -3 | +3 | -2 | +2 | -1 | +1 |   |   |   |    |    |    |    |    |    |    |
|         |    |    |    |    |    |    |   |   |   |    |    |    |    |    |    |    |
| Marking | -3 | +3 | -2 | +2 | -1 | +1 |   |   |   |    |    |    |    |    |    |    |
| 0/OFF   |    |    |    |    |    |    |   |   |   |    |    |    |    |    |    |    |
| I/ON    | X  | X  | X  | X  | X  | X  |   |   |   |    |    |    |    |    |    |    |



Drilling Templates

