

DC Disconnect Switch  
DK Series

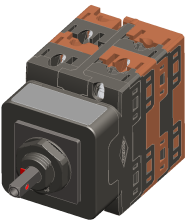


Bremas Ersee SpA  
Via castellazzo 9 - 20040 Cambiago (MI)  
Tel +39 02 96651611 Fax +39 02 96651639  
www.bremas.eu info@bremas.it  
ISO 9001 Certified Quality System

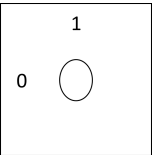
DK10016220ALMVU6



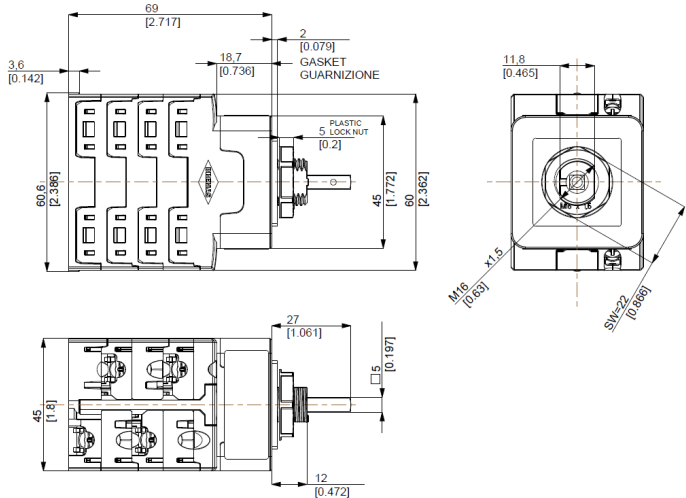
| Technical data according to IEC 60947-3:2015/A2 AnnexD |      |                        |  |      |
|--|------|------------------------|--|------|
| Utilization category                                   |      |                        | PV1 (DC21B)  | PV2  |
| Rated operational voltage                              | Ue   | V dc                   | 1200   | -    |
| Rated operational current                              | Ie   | A dc                   | 8  | -    |
| Rated operational voltage (second rating)              | Ue   | V dc                   | 1000   | 1000 |
| Rated operational current (second rating)              | Ie   | A dc                   | 16   | 6    |
| Rated operational voltage (third rating)               | Ue   | V dc                   | 750  | 750  |
| Rated operational current (third rating)               | Ie   | A dc                   | 32   | 12   |
| Rated operational voltage (fourth rating)              | Ue   | V dc                   | -  | 700  |
| Rated operational current (fourth rating)              | Ie   | A dc                   | -  | 16   |
| Rated operational voltage (fifth rating)               | Ue   | V dc                   | 500  | -    |
| Rated operational current (fifth rating)               | Ie   | A dc                   | 50   | -    |
| Rated thermal current                                  | Ith  | A                      | 50   |      |
| DC Poles   |      | Nr.                    | 4  |      |
| Rated conditional short-circuit current                |      |                        | 5kA  |      |
| Rated insulation voltage                               | Ui   | V dc                   | 1.500  |      |
| Rated impulse withstand voltage                        | Uimp | kV                     | 8  |      |
| Rated short-time withstand current (1s)                | Icw  | A                      | 780  |      |
| Rated short-circuit making capacity                    | Icm  | kA                     | 1,4  |      |
| Power loss per layer at 20A/50A                        |      | W                      | 0,2/1,25   |      |
| Max fuse size for short circuit protection             | gPV  | A                      | 50   |      |
| Mechanical characteristics                             |      |                        |  |      |
| Type of mounting                                       |      |                        | Panel mounting Head Up Screws M16<br>L=12mm fixing |      |
| Layers   |      | Nr.                    | 4  |      |
| Screwdriver orientation for terminals                  |      |                        | Head up  |      |
| External metal parts (Screws, shaft)                   |      |                        | Stainless steel                                    |      |
| Terminal capacity with flexible/solid wires            | Max  | mm <sup>2</sup><br>AWG | 2x6<br>2x10  |      |
| Terminal capacity with fork terminals                  | Max  | mm <sup>2</sup><br>AWG | 1x16<br>1x6  |      |
| Thread dimensions for terminal screws                  |      |                        | M4   |      |
| Terminal screws tightening torque                      |      | Nm                     | 1,7 ± 10%  |      |
| Tightening torque panel mounting nut                   |      | Nm                     | 2+/-10%  |      |
| Tightening torque M3 screw in the actuator             |      | Nm                     | 0,6 ± 10%  |      |
| Panel tickness   |      | mm                     | Max 4  |      |
| Shaft protrusion                                       |      | mm                     | 27   |      |
| Actuator operation forces                              |      | Nm                     | 1,5  |      |
| Net Weight   |      | g                      | 230  |      |
| Protection degree IEC 529 EN 60529                     |      |                        |  |      |
| Switch IP terminal                                     |      |                        | IP20   |      |
| Switch IP rating mounted on panel                      |      |                        | IP66   |      |
| Ambient conditions                                     |      |                        |  |      |
| Pollution degree ins.                                  |      |                        | 2  |      |
| Operational ambient temperature                        |      |                        | -40°C ÷ +70°C                                      |      |
| Storage ambient temperature                            |      |                        | -40°C ÷ +85°C                                      |      |
| Damp heat test IEC60068-2-30                           |      |                        | 90-100% RH at +55 °C                               |      |
| Knob   |      |                        | UV resistant                                       |      |



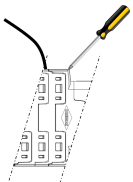
Positions



Dimensions



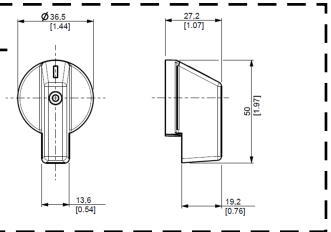
Screwdriver orientation  
for terminals



Electrical Diagram

| Layer   | 1  | 2  | 3  | 4  | 5 | 6 | 7 | 8 | 9 | 10 | 11 | 12 | 13 | 14 | 15 | 16 |
|---------|----|----|----|----|---|---|---|---|---|----|----|----|----|----|----|----|
| Marking | -2 | +2 | -1 | +1 |   |   |   |   |   |    |    |    |    |    |    |    |
|         |    |    |    |    |   |   |   |   |   |    |    |    |    |    |    |    |
| Marking | -2 | +2 | -1 | +1 |   |   |   |   |   |    |    |    |    |    |    |    |
| 0/OFF   |    |    |    |    |   |   |   |   |   |    |    |    |    |    |    |    |
| I/ON    | X  | X  | X  | X  |   |   |   |   |   |    |    |    |    |    |    |    |

Knob



Drilling Templates

