

DC Disconnect Switch
DK Series

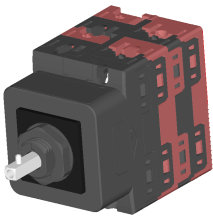


Bremas Ersee SpA
Via castellazzo 9 - 20040 Cambiago (MI)
Tel +39 02 96651611 Fax +39 02 96651639
www.bremas.eu info@bremas.it
ISO 9001 Certified Quality System

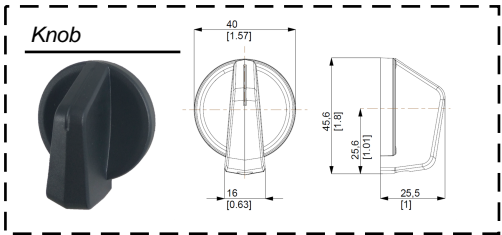
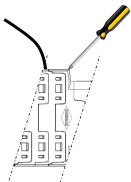
DK10016220ALMVU5



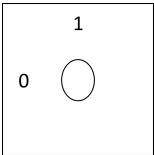
Technical data according to IEC 60947-3:2015/A2 AnnexD				
Utilization category			PV1 (DC21B)	PV2
Rated operational voltage	Ue	V dc	1200	-
Rated operational current	Ie	A dc	8	-
Rated operational voltage (second rating)	Ue	V dc	1000	1000
Rated operational current (second rating)	Ie	A dc	16	6
Rated operational voltage (third rating)	Ue	V dc	750	750
Rated operational current (third rating)	Ie	A dc	32	12
Rated operational voltage (fourth rating)	Ue	V dc	-	700
Rated operational current (fourth rating)	Ie	A dc	-	16
Rated operational voltage (fifth rating)	Ue	V dc	500	-
Rated operational current (fifth rating)	Ie	A dc	50	-
Rated thermal current	Ith	A	50	
DC Poles		Nr.	4	
Rated conditional short-circuit current			5kA	
Rated insulation voltage	Ui	V dc	1.500	
Rated impulse withstand voltage	Uimp	kV	8	
Rated short-time withstand current (1s)	Icw	A	780	
Rated short-circuit making capacity	Icm	kA	1,4	
Power loss per layer at 20A/50A		W	0,2/1,25	
Max fuse size for short circuit protection	gPV	A	50	
Mechanical characteristics				
Type of mounting			Panel mounting Head Up Screws M16 L=12mm fixing	
Layers		Nr.	4	
Screwdriver orientation for terminals			Head up	
External metal parts (Screws, shaft)			Stainless steel	
Terminal capacity with flexible/solid wires	Max	mm ² AWG	2x6 2x10	
Terminal capacity with fork terminals	Max	mm ² AWG	1x16 1x6	
Thread dimensions for terminal screws			M4	
Terminal screws tightening torque		Nm	1,7 ± 10%	
Tightening torque panel mounting nut		Nm	2+/-10%	
Tightening torque M3 screw in the actuator		Nm	0,6 ± 10%	
Panel tickness		mm	Max 4	
Shaft protrusion		mm	27	
Actuator operation forces		Nm	1,5	
Net Weight		g	230	
Protection degree IEC 529 EN 60529				
Switch IP terminal			IP20	
Switch IP rating mounted on panel			IP66	
Ambient conditions				
Pollution degree ins.			2	
Operational ambient temperature			-40°C ÷ +70°C	
Storage ambient temperature			-40°C ÷ +85°C	
Damp heat test IEC60068-2-30			90-100% RH at +55 °C	
Knob			UV resistant	



Screwdriver orientation
for terminals



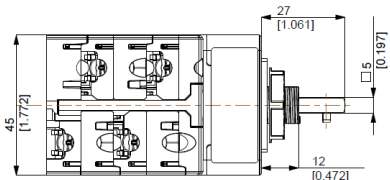
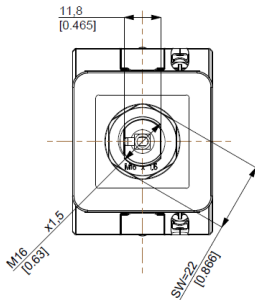
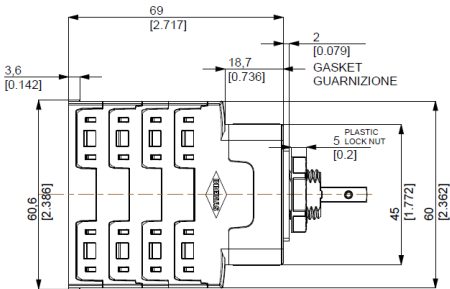
Positions



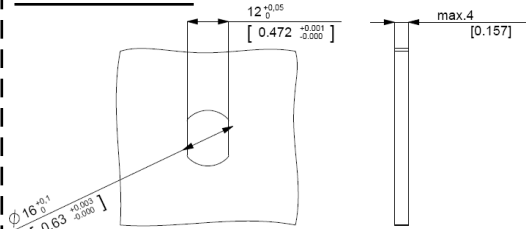
Electrical Diagram

Layer	1	2	3	4	5	6	7	8	9	10	11	12	13	14	15	16
Marking	-2	+2	-1	+1												
Marking	-2	+2	-1	+1												
0/OFF																
I/ON	X	X	X	X												

Dimensions



Drilling Templates



©2017 Copyright Bremas Ersee. Subject to change without notice and errors excepted. Data reported in this paper are carefully checked and represent typical values of series production. The descriptions of the device and its applications, contexts of use, details of external controls, information on installation and operation are provided to the best of our knowledge. In any case, this does not mean from the features described it may derive legal responsibilities that extend beyond the "Terms and Conditions of sales" of Bremas Ersee. The customer / user must examine our information and recommendations and the relevant technical regulations before using the products its own purpose.