

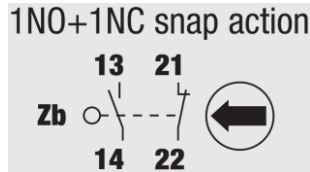
**Cod. M306NONC**

### Standard and Approvals

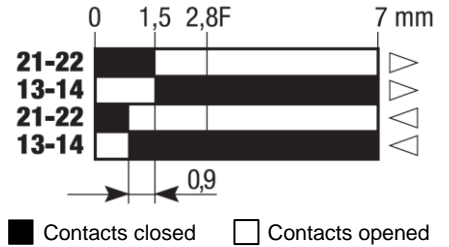
- Switch according to IEC/EN 60947-3
- Certified UL60947-4-1A and CAN/CSA C22.2 No. 60947-4-1-07
- Suitable as Manual Motor Controller



### Contact block



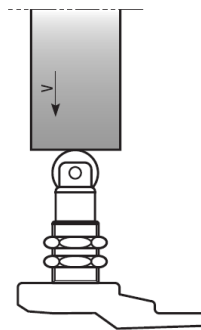
### Contact travel



### Characteristics

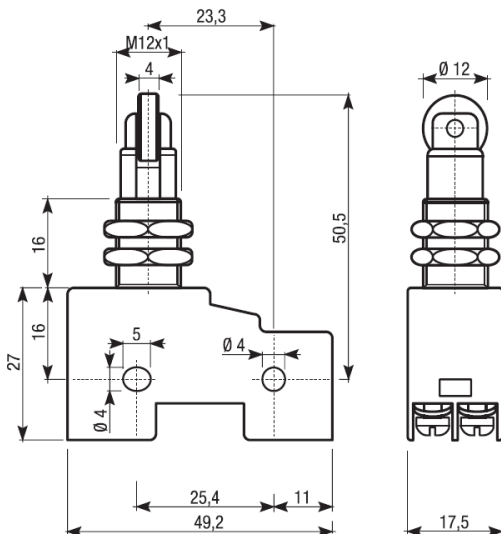
- Thermoplastic body
- Steel roller plunger turned 90°
- 1NO+1NC snap action contact block
- Contact block with positive opening
- Cable screw terminals

### Drive cam operating parameters



Min. force (N)	
for tripping	4
for positive opening	16

### Dimension



### Cable Input



Cable entry with screw

### Actuator



**06**

Steel roller plunger turned 90°

**Cod. M306NONC**

### Technical information

		TIPO	M3		
Maximum operating frequency		operat./hour <sup>1</sup>	1800		
Insulation resistance	500 V DC	MΩ	100		
Dielectric strenght	50/60 Hz per 1'	V AC	2500 <sup>2</sup>		
Rated insulation voltage	Ui IEC947-5-1	V AC	250		
Rated thermal current	Ithe IEC947-5-1	A	10		
Rated operating current	Category AC15 A300	Ie IEC947-5-1/EN60947-5-1			
		24V	A	5	
		125V	A	3	
		230 V	A	1,5	
Contact resistance	IEC255-7 cat.3	initial value	mΩ	25 max	
Short circuit protective devices	IEC269 (IEC947-5-1) fuse type gL or gG		A	3	
Pollution degree	IEC947-5-1		A	3	
Protection degree	EN 60529			<b>IP40</b>	
Vibration resistance	IEC68-2-6	mm		0,35 ± 15% (10 ÷ 55 Hz ± 1 Hz)	
Shock resistance	IEC68-2-27	11ms	g	30	
Mechanical life			cycles	15,000,000	
Electric life	at 250V AC 6A with resistance load cosφ=1		cycles	500.000	
	at 250V AC 6A with inductive load cosφ=0,4		cycles	500.000	
Terminals	Type			Screw with combined notch and retractable plate (notch Ph. Size 1)	
	Screw			M3,5	
	Protection degree			<b>IP00 (IP40 with terminals cover)</b>	
	Material			Steel class 8,8 / Galvanized	
	Max. screw tightening torque			120 (12,24)	
	Max connecting capacity	rigid cable	mm <sup>2</sup>		2x1,5
		flexible cable	mm <sup>2</sup>		2x1,5
with prod terminal				1x1,5	
Terminal numbering				In accordance with EN50013	
Air ambient temperature	operational	°C		-25 ÷ +85 (without formation of ice)	
Relative umidity	operational			95% max	

<sup>1</sup> One operation cycle means two movements, one to close and one to open as required by EN 60947-5

<sup>2</sup> Between terminals with different polarity; between live mechanical parts and ground; between live mechanical parts and non-current-carrying metal parts