

Cod. M305NONC

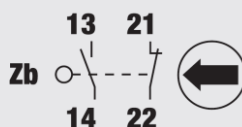
Standard and Approvals

- Switch according to IEC/EN 60947-3
- Certified UL60947-4-1A and CAN/CSA C22.2 No. 60947-4-1-07
- Suitable as Manual Motor Controller

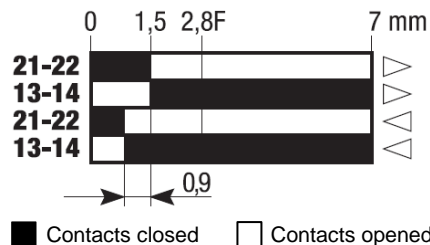


Contact block

1NO+1NC snap action



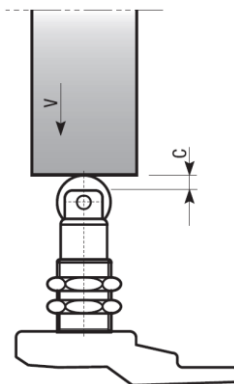
Contact travel



Characteristics

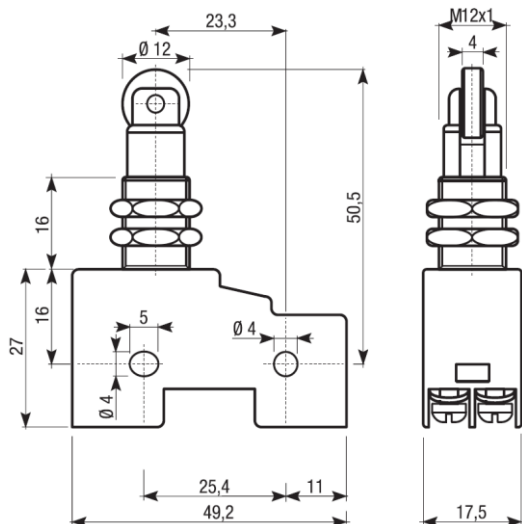
- Thermoplastic body
- Steel roller plunger
- 1NO+1NC snap action contact block
- Contact block with positive opening
- Cable screw terminals

Drive cam operating parameters



Min. force (N)	
for tripping	4
for positive opening	16

Dimension



Cable Input



Cable entry with screw

Actuator



05

Steel roller plunger

Cod. M305NONC

Technical information

		TIPO	M3					
Maximum operating frequency		operat./hour ¹	1800					
Insulation resistance		500 V DC MΩ	100					
Dielectric strenght		50/60 Hz per 1'	2500 ²					
Rated insulation voltage	Ui	IEC947-5-1	250					
Rated thermal current	Ithe	IEC947-5-1	10					
Rated operating current	Category AC15 A300	Ie IEC947-5-1/EN60947-5-1	24V	A	5			
			125V	A	3			
			230 V	A	1,5			
Contact resistance		IEC255-7 cat.3 initial value	mΩ	25 max				
Short circuit protective devices		IEC269 (IEC947-5-1) fuse type gL or gG	A	3				
Pollution degree		IEC947-5-1	A	3				
Protection degree		EN 60529		IP40				
Vibration resistance		IEC68-2-6	mm	0,35 ± 15% (10 ÷ 55 Hz ± 1 Hz)				
Shock resistance		IEC68-2-27	11ms	g	30			
Mechanical life				cycles	15,000,000			
Electric life	at 250V AC 6A with resistance load cosφ=1			cycles	500.000			
				at 250V AC 6A with inductive load cosφ=0,4			cycles	500.000
Terminals	Type				Screw with combined notch and retractable plate (notch Ph. Size 1)			
	Screw				M3,5			
	Protection degree				IP00 (IP40 with terminals cover)			
	Material				Steel class 8,8 / Galvanized			
	Max. screw tightening torque				120 (12,24)			
	Max connecting capacity		rigid cable	mm ²		2x1,5		
			flexible cable	mm ²		2x1,5		
with prod terminal					1x1,5			
Terminal numbering					In accordance with EN50013			
Air ambient temperature		operational	°C		-25 ÷ +85 (without formation of ice)			
Relative umidity		operational			95% max			

¹ One operation cycle means two movements, one to close and one to open as required by EN 60947-5

² Between terminals with different polarity; between live mechanical parts and ground; between live mechanical parts and non-current-carrying metal parts