

Cod. LLA432N2



Standard and Approvals

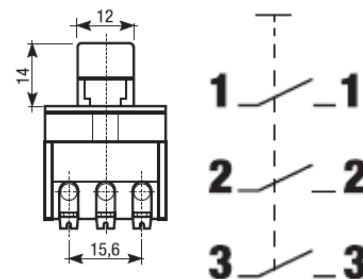
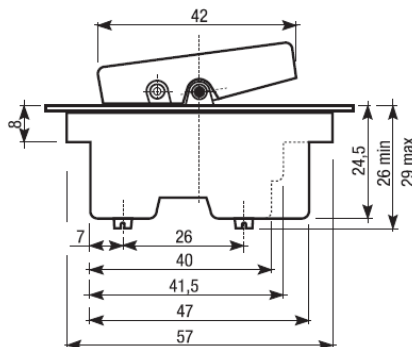
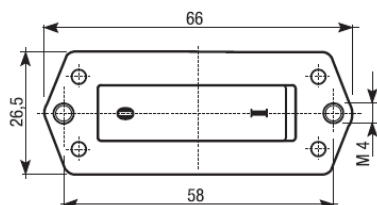
- Switch according to IEC/EN 60947-3
- Certified UL60947-4-1A and CAN/CSA C22.2 No. 60947-4-1-07
- Suitable as Manual Motor Controller



Technical characteristics: Body

- 3 pole switch with black stable lever
- Fixing holes distance 58mm, L=26,5
- Body and drive in plastic material
- IP00 Protection degree

Dimension



Diagram

Rated insulation voltage	Ui	V	380
Rated operating voltage	Ue	V	380
Rated operation frequency		Hz	50/60
Rated Current			
Resistive load	In	A	15
Inductive load	In	A	10
Mechanical characteristics			
Mechanical life (120 cycles/hour)			1E5
Electrical life	Sec. EN61058		5E4
Insulation class	Sec. EN61058		II
Connecting capability with flexible wires	Min-Max	mm2	0,75-2,5
Connecting capability with solid wires	Min-Max	mm2	1-2,5
Connecting capability with flexible wires	Min-Max	AWG	19-14
Connecting capability with solid wires	Min-Max	AWG	18-14
Terminal screw			M3,5
Protection degree IEC 529 EN 60529			IP00
Ambient condition			
Operational ambient temperature		°C	T55
Storage ambient temperature		°C	-30 ÷ +70
Withstand to constant humid			sec. IEC 60068-2-8
Withstand to cycling humid			sec. IEC 60068-2-30