

Cod. FMV4R16100

Standard and Approvals

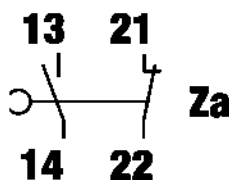
- Switch according to IEC/EN 60947-3
- Certified UL60947-4-1A and CAN/CSA C22.2 No. 60947-4-1-07
- Suitable as Manual Motor Controller



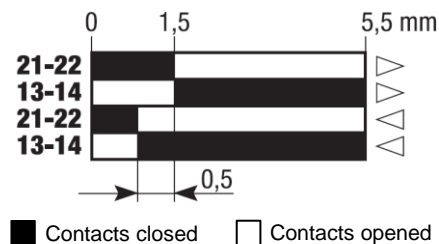
Characteristics

- Metal body and metal head
- IP64 protection degree
- Steel roller plunger actuator
- 1NO+1NC snap action contact block
- Contact block with positive opening
- 2 cable entries
- Cable entry with Pg thread

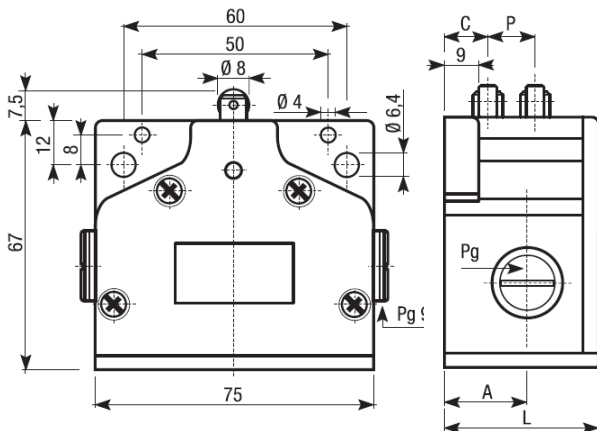
Contact block



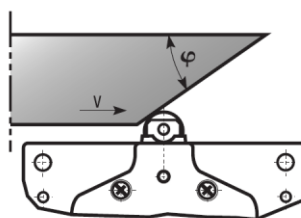
Contact travel



Dimension



Drive cam operating parameters



| Drive cam operating parameters | |
|--------------------------------|-------------|
| φ | V max (m/s) |
| 30° | 1 |
| 20° | 1,5 |

| Drive forces | |
|---------------------------------|------|
| Minimum command force | 10 N |
| Minimum force on lateral travel | 18 N |

| N° of actuators | P | C | L | Pg | A |
|-----------------|----|----|----|------|----|
| 4 | 16 | 16 | 80 | 13,5 | 30 |

P = Pitch (distance between two actuators)

C = Distance between bracket and first actuator

L = Overall dimensions

A = Distance between bracket and input/output holes

Cod. FMV4R16100

Technical data

| | | | TYPE | FMV | |
|-----------------------------------|------------------------------|---|---------------------------|-------------------|--|
| Maximum operating frequency | | | operat./hour ¹ | 1800 | |
| Insulation resistance | | 500 V DC | MΩ | 100 | |
| Dielectric strenght | | 50/60 Hz for 1' | V AC | 2000 ² | |
| Rated insulation voltage | Ui | IEC947-5-1 | V AC | 500 | |
| Rated thermal current | Ithe | IEC947-5-1 | A | 10 | |
| Rated operating current | Category AC15 A300 | Ie IEC947-5-1/EN60947-5-1 | 24V | A | 10 |
| | | | 125V | A | 10 |
| | | | 230 V | A | 6 |
| | | | 400 V | A | 4 |
| Contact resistance | | IEC255-7 cat.3 | initial value | mΩ | 25 |
| Short circuit protective devices | | IEC269 (IEC947-5-1) | fuse type gL or gG | A | 10 |
| Pollution degree | | IEC947-5-1 | A | A | 3 |
| Protection degree | | EN 60529 | | | IP64 |
| Protection against electric shock | | | metal class | | I |
| Vibration resistance | | IEC68-2-6 | mm | | 0,35 ± 15% (10 ÷ 55 Hz ± 1 Hz) |
| Shock resistance | | IEC68-2-27 | 11ms | g | 30 |
| Mechanical life | | | cycles | | 30,000,000 |
| Electric life | | at 250V AC 6A with resistance load cosφ=1 | cycles | | 500,000 |
| | | at 250V AC 6A with inductive load cosφ=0,4 | cycles | | 500,000 |
| | | | | | |
| Terminals | Type | | | | Screw with combined notch and retractable plate (notch Ph, Size 1) |
| | Screw | | | | M3,5 |
| | Material | | | | Steel class 8,8 / Galvanized |
| | Max. screw tightening torque | | Ncm (Kg cm) | | 120 (12,24) |
| | Max connecting capacity | rigid cable | | mm ² | |
| flexible cable | | | mm ² | | 2x1,5 |
| | with prod terminal | | | | 1x1,5 |
| Terminal numbering | | | | | In accordance with EN50013 |
| Air ambient temperature | | | operational | °C | -10 ÷ +70 (without formation of ice) |
| Relative umidity | | | operational | | 95% max |

¹ One operation cycle means two movements, one to close and one to open as required by EN 60947-5

² Between terminals with different polarity; between live mechanical parts and ground; between live mechanical parts and non-current-carrying metal parts