


Cod. FMV4R12100

Standard and Approvals

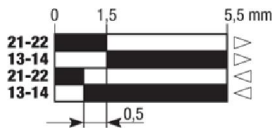
- Switch according to IEC/EN 60947-5-1: IEC255-7 cat.3; EN60529; IEC68-2-6; IEC68-2-27; EN50013
- 

Characteristics

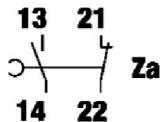
- Metal body and metal head
- IP64 protection degree
- Steel roller plunger actuator
- 1NO+1NC snap action contact block
- Contact block with positive opening
- 2 cable entries
- Pg 13,5 thread
- Weight: 0,528 Kg



Contact travel



Contact block



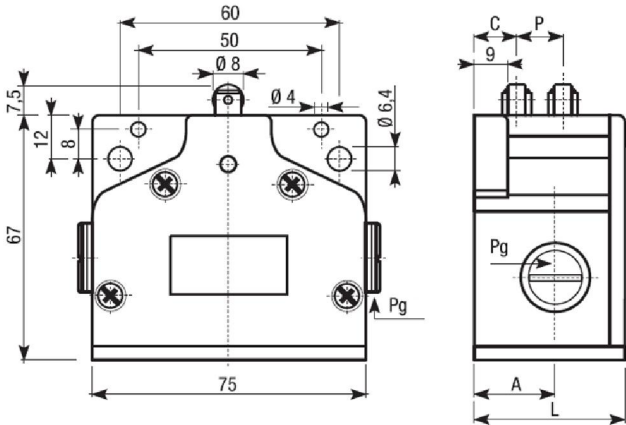
■

Contacts closed

□

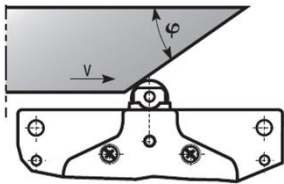
Contacts opened

Dimensions



N° of actuators	P	C	L	Pg	A
4	12	12	60	13,5	30

Drive cam operating parameters



φ	V max (m/s)
30°	1
20°	1,5

Drive forces	
Minimum command force	10 N
Minimum force on lateral travel	18 N

P = Pitch (distance between two actuators)
C = Distance between bracket and first actuator
L = Overall dimensions
A = Distance between bracket and input/output holes

Cod. FMV4R12100

				TYPE	FMV
Maximum operating frequency				operat./hour ¹	1800
Insulation resistance			500 V DC	MΩ	100
Dielectric strenght			50/60 Hz for 1'	V AC	2000 ²
Rated insulation voltage	Ui	IEC947-5-1		V AC	500
Rated thermal current	Ithe	IEC947-5-1		A	10
Rated operating current	Category AC15 A300	Ie IEC947-5-1/EN60947-5-1	24V	A	10
			125V	A	10
			230 V	A	6
			400 V	A	4
Contact resistance		IEC255-7 cat,3	initial value	mΩ	25
Short circuit protective devices		IEC269 (IEC947-5-1)			
		fuse type gL or gG		A	10
Pollution degree		IEC947-5-1		A	3
Protection degree		EN 60529			IP64
Protection against electric shock			metal	class	I
Vibration resistance		IEC68-2-6		mm	0,35 ± 15% (10 ÷ 55 Hz ± 1 Hz)
Shock resistance		IEC68-2-27	11ms	g	30
Mechanical life				cycles	30.000.000
Electric life		at 250V AC 6A with resistance load cosφ=1		cycles	500.000
		at 250V AC 6A with inductive load coφ=0,4		cycles	500.000
Terminals	Type				Screw with combined notch and retractable plate (notch Ph. Size 1)
	Screw				M3,5
	Material				Steel class 8,8 / Galvanized
	Max. screw tightening torque		Ncm (Kg cm)		120 (12,24)
	Max connecting capacity	rigid cable	mm²		2x1,5
		flexible cable	mm²		2x1,5
		with prod terminal			1x1,5
Terminal numbering					In accordance with EN50013
Air ambient temperature			operational	°C	-10 ÷ +70
					(without formation of ice)
Relative umidity			operational		95% max

¹ One operation cycle means two movements, one to close and one to open as required by EN 60947-5

² Between terminals with different polarity; between live mechanical parts and ground; between live mechanical parts and non-current-carrying metal parts