

Cod. E10000II



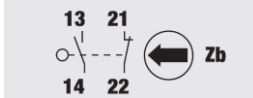
Standard and Approvals

- Switch according to IEC/EN 60947-3
- Certified UL60947-4-1A and CAN/CSA C22.2 No. 60947-4-1-07
- Suitable as Manual Motor Controller

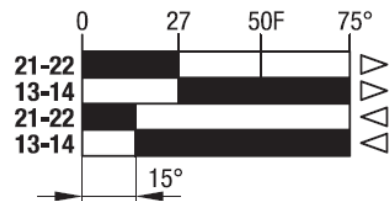


Contact block

1NO+1NC snap action



Contact travel

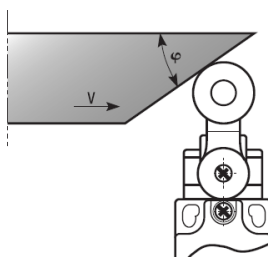


■ Contacts closed □ Contacts opened

Characteristics

- Metal head and Thermoplastic body
- IP66 protection degree
- 1NO+1NC snap action contact block
- Contact block with positive opening
- 1 cable entry
- Pg 13,5 thread

Drive cam operating parameters

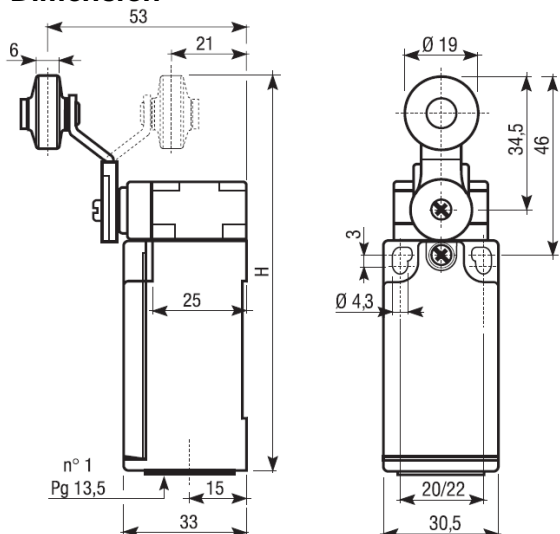


φ	V max (m/s)
30°	1,5
45°	1
60°	0,75
60-90°	0,25

Drive forces

Minimum command force	15 Ncm
Minimum forced opening force	35 Ncm

Dimension



Cable Input/Output

1 on the bottom



Actuator



Thermoplastic roller lever

Cod. E10000II

Technical data

		TYPE		E100 / E200 / E300 / E400	
Maximum operating frequency		operat./hour ¹		3600	
Insulation resistance		500 V DC	MΩ	100	
Dielectric strenght		50/60 Hz for 1'	V AC	2500 ²	
Rated insulation voltage	Ui	IEC947-5-1	V AC	500	
Rated thermal current	Ithe	IEC947-5-1	A	10	
Rated operating current	Category AC15 A300	IEC947-5-1/EN60947-5-1	24V	A	10
			125V	A	6
			230 V	A	6
			400 V	A	3
Contact resistance		IEC255-7 cat.3	initial value	mΩ	25
Short circuit protective devices		IEC269 (IEC947-5-1)			
		fuse type gL or gG	A		10
Rated conditionals short circuit current		IEC947-5-1	A		1000
Pollution degree		IEC947-5-1	A		3
Protection degree		EN 60529			IP66
Protection against electric shock			plastic class		II
			metal class		I
Vibration resistance		IEC68-2-6	mm		0,35 ± 15% (10 ÷ 55 Hz ± 1 Hz)
Shock resistance		IEC68-2-27	11ms	g	30
Mechanical life				cycles	20.000.000
Electric life		at 250V AC 6A with resistance load cosφ=1		cycles	500.000
		at 250V AC 6A with inductive load cosφ=0,4		cycles	500.000
Distance between contacts		Snap action type		mm	2x1,25
		Low action type		mm	2x2
Terminals		Type			Screw with combined notch and retractable plate (notch Ph, Size 1)
		Screw		M	3,5
		Protection degree			IP20
		Material			Steel class 8,8 / Galvanized
		Max screw tightening torque			120 (12,24)
		Max connecting capacity	rigid cable	mm ²	
	flexible cable		mm ²		2x1,5
Terminal numbering					In accordance with EN50013
Air ambient temperature		operational		°C	-35 ÷ +85 (without formation of ice)
Relative umidity		operational			95% max

¹ One operation cycle means two movements, one to close and one to open as required by EN 60947-5.

² Between terminals of the same polarity; between terminals with different polarity; between live mechanical parts and ground; between live mechanical parts and non-current-carrying metal parts.