

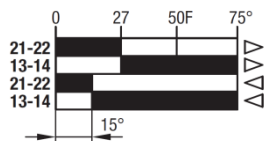
**Cod. E30000EM**



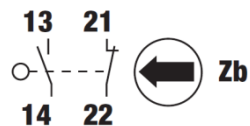
**Characteristics**

- Metal body and head
- IP66 protection degree
- Thermoplastic straight roller, lever actuator
- 1NO+1NC snap action contact block
- Contact block with positive opening
- 3 cable entries
- Pg 13.5 thread
- Weight: 0,355 Kg

**Contact travel**

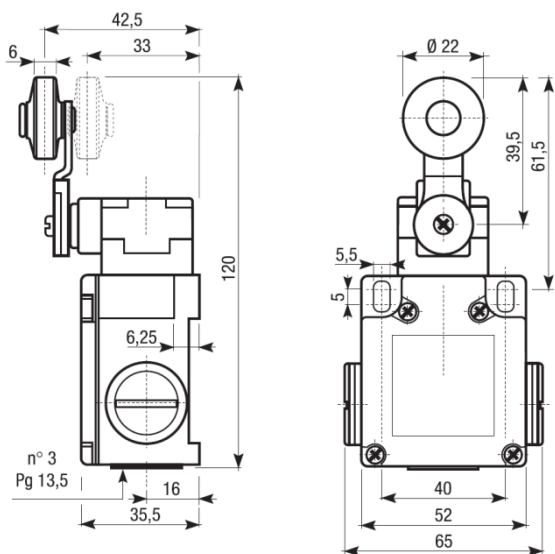


**Contact block**

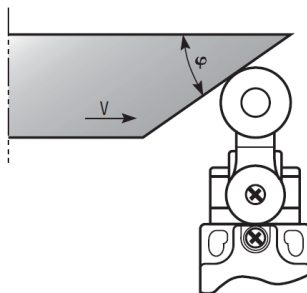


■ Contacts closed □ Contacts opened

**Dimensions**



**Drive cam operating parameters**



$\varphi$	V max (m/s)
30°	1,5
45°	1
60°	0,75
60-90°	0,25

Min. force (cNm)	
for tripping	15
for positive opening	35

### Cod. E30000EM

Insulation resistance		500VDC	MΩ	100	
Dielectric strength		50/60 Hz for 1' *	VAC	2500	
Rated insulation voltage	Ui	IEC947-5-1	VAC	500	
Rated thermal current	Ithe	IEC947-5-1	A	10	
Rated operating current		IEC/EN 947-5-1			
	Category AC15	le	24V	A	10
	A300		125V	A	6
			230V	A	6
			400V	A	3
Contact resistance	IEC255-7 cat.3	Initial value	MΩ	25	
Short circuit protective devices	IEC269 (IEC947-5-1)	gl or gG type fuse	A	10	
Rated conditionals short circuit current	IEC947-5-1		A	1000	
Pollution degree	IEC947-5-1			3	
Protection degree	EN60529			IP66	
Protection against electric shock		plastic	class	II	
		metal	class	I	
Vibration resistance	IEC68-2-6	mm		0,35±15% 10+55 Hz ± 1 Hz	
Shock resistance	IEC68-2-27	11 ms	g	30	
Mechanical life			cycles	15000000	
Electrical life		at 250 V AC 6A with resistance load cosφ=1	cycles	500000	
		at 250 V AC 6A with inductive load cosφ=0,4	cycles	500000	
Distance between contacts		snap action type	mm	2x1,2	
		slow action type	mm	2x2	
Terminals		type		Screw with combined notch and retravtable plate (notch Ph. size 1)	
		screw	M	3,5	
		protection degree		IP20	
		material		Steel class 8,8/Galvanized	
		max. screw tightening torque	cNm (Kg cm)	120 (12,24)	
		max. connecting capacity	rigid cable mm <sup>2</sup>	2x1,5	
			flexible cable mm <sup>2</sup>	2x1,5	
		with prod terminal		in accordance EN50013	
Air ambient temperature		operational	°C	-35++85 (with out formation of ice)	
Relative humidity		operational		95% max	

\* Between terminals of the same polarity; between terminals with different polarity; between live mechanical parts and ground; between live mechanical parts and non-current-carrying metal parts

### Standard

IEC/EN60947-5-1; EN60947-1; UNI EN 1088; EN ISO 12100-1; EN ISO 12100-2; IEC 529;  
 EN 60529; VDE 0660-200; VDE 0113; EN81-1; EN81-2

### Approvals

