

Cod. DS1003BAL6

Standard and Approvals

- Suitable as Manual Motor Controller
- Certified UL508 and CSA C22.2 No. 14-13
- Disconnect switch according to IEC/EN 60947-3



Technical characteristics: Body

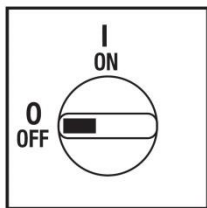
- Disconnect switch 3P
- IP20 protection degree
- Rating operational current: 100A
- Rating thermal current: 100A
- Rating insulation voltage: 690V
- Base Mounting
- Fixing: - with screw
- Din rail
- Switching angle: 90°
- Positive opening double break contacts, silver alloy made.
- Self-extinguishing class V0



Technical characteristics: Plate and knob

- Yellow plate 67x67mm and red padlockable knob (max. 3 padlocks)
- Protection degree IP66
- Fixing: - 2 screw at 28mm vertical
- 2 screw at 32mm horizontal

Plate and position



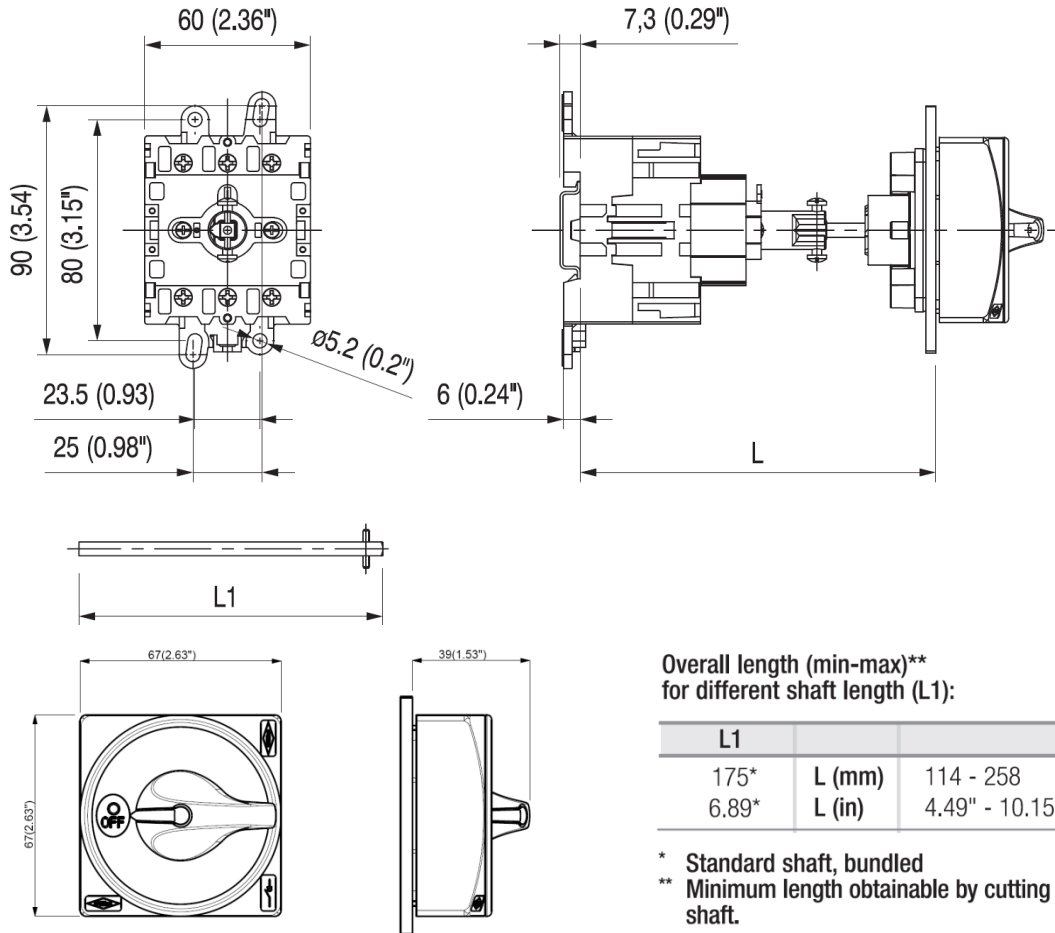
Electrical scheme



Cod. DS1003BAL6

measures in mm (in)

Dimensions

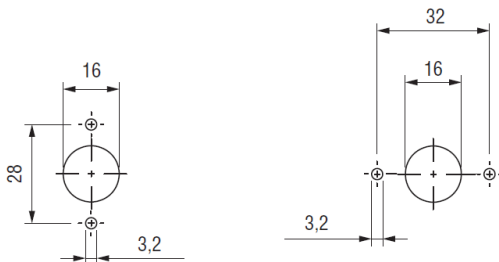


Overall length (min-max)
for different shaft length (L1):**

L1	L (mm)	L (in)
175*	114 - 258	4.49" - 10.15"
6.89*		

* Standard shaft, bundled
** Minimum length obtainable by cutting the shaft.

Drilling templates



Cod. DS1003BAL6

			DS100	
Technical data IEC 947-3 EN 60947-3				
Rated insulation voltage	Ui	V	690	
Rated operating voltage	Ue	V	690	
Rated impulse withstand voltage	Uimp	kV	6	
Rated thermal current for open switch	Ith	A	100	
Rated thermal current for enclosed switch	Ithe	A	80	
Rated operation frequency		Hz	50	
Power dissipation for each pole		W	-	
Rated operating current				
AC-21A Switching resistive loads, including moderate overloads	690V	Ie	A	100
AC-22A Switching of mixed resistive and inductive loads, including moderate overloads	690V	Ie	A	100
Rated operating power				
AC-23A Switching of motor loads or other highly inductive loads 3 phase - 3 pole	400V	Kw (A)	35 (63)	
	690V	Kw (A)	30 (31)	
AC-3 Squirrel cage motors: starting, switching off motors during running 3 phase - 3 pole	400V	Kw (A)	30 (54)	
	690V	Kw (A)	22 823)	
Rated breaking capability in AC-23A (@50,45)	400V	A	504	
	690V	A	-	
Short circuit protection				
Rated short time withstand current	Icw	A	1500	
Rated short-circuit make capacity	Icm	A	2500	
Rated conditional short-circuit current		kA	15	
With fuses class gG	500V	A	100	
Mechanical life (120 cycles/hour)	Mil.Man		2	
Connecting capability with flexible wires	Min-Max	mm ²	6-35	
Connecting capability with solid wires	Min-Max	mm ²	10-50	
Terminal screw			M5	
Screw tightening torque		Nm	2,8	
Technical data UL/CSA				
Rated operating voltage	Ue	V	600	
General use current	600Vac	Ie	A	100
Rated operating power				
1 phase - 2 pole	120V	Hp (A)	5/56	
	240V	Hp (A)	10/50	
	200V	Hp (A)	20/62	
3 phase - 3 pole	240V	Hp (A)	25/68	
	480V	Hp (A)	50/65	
	600V	Hp (A)	50/52	
Line protection fuses (Class J, 600Vac)		A	225	
Short Circuit Rating@600Vac		kA	10	
Mechanical characteristics				
Connecting capability with flexible wires	Min-Max	AWG	10/01	
Connecting capability with solid wires	Min-Max	AWG	08/01	
Screw tightening torque		ib.in	24	
Protection degree IEC 529 EN 60529				
Terminals			IP20	
Plate and knob			IP66	
Ambient conditions				
Operating ambient temperature		°C	-25 + +70	
Storage ambient temperature		°C	-40 + +85	
Withstand to constant humid according to IEC 60068			sec. IEC 60068-2-78	
Withstand to cyclic humid according to IEC 60068			sec. IEC 60068-2-30	
Auxiliary contacts			XC012AB XC012CB	
Rated insulation voltage	Ui	V	12	
Rated thermal current for open switch	Ith	A	12	
AC-15 Control of a.c electromagnetic loads	230V	A	6	