

**Cod. DS0634RQK6**

**Standard and Approvals**

- Switch according to IEC/EN 60947-3
- Certified UL60947-4-1A and CAN/CSA C22.2 No. 60947-4-1-07
- Suitable as Manual Motor Controller



**Technical characteristics: Body**

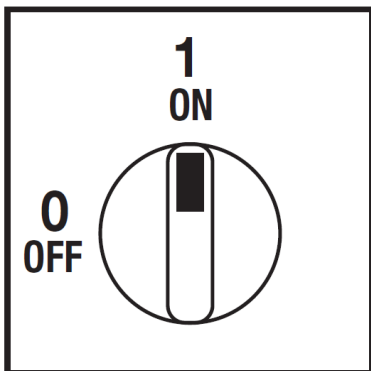
- Disconnect switch 3+N
- IP20 protection degree
- Rating operational current Ie: 63A (AC-21A)
- Rating thermal current Ith: 63A
- Rating insulation voltage: 690V
- Base Mounting
- Fixing:
  - with screws
  - Din rail
- Switching angle: 90°
- Positive opening double break contacts, silver alloy made.
- Self-extinguishing class V2



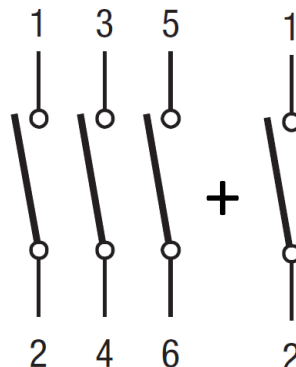
**Technical characteristics: Plate and knob**

- Grey plate 67x67mm and black padlockable knob (max. 3 padlocks)
- Protection degree IP66
- Fixing with 2 screw at 28mm (1,10") horizontal or 2 screw at 32mm (1,26") vertical

**Plate and position**



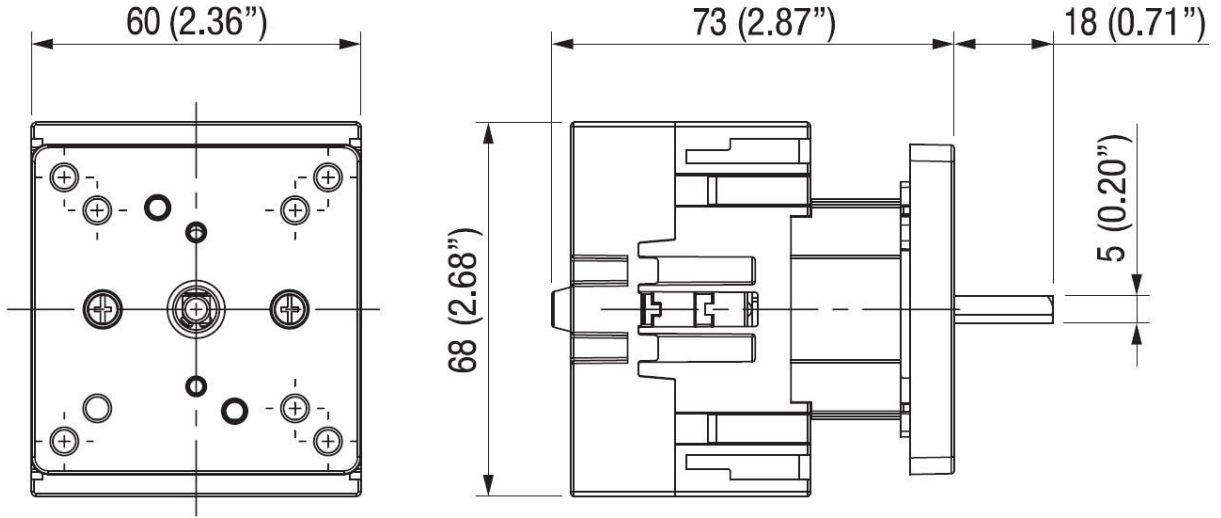
**Electrical scheme**



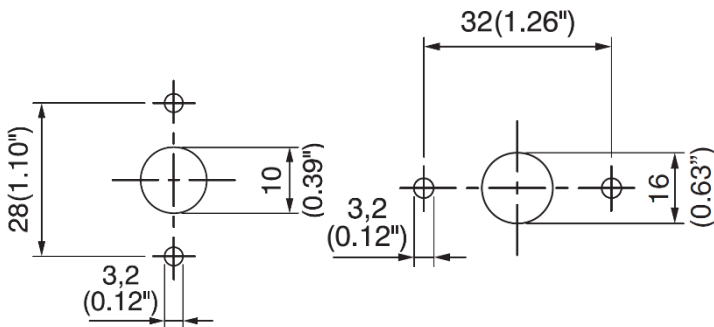
**Cod. DS0634RQK6**

measures in mm (in)

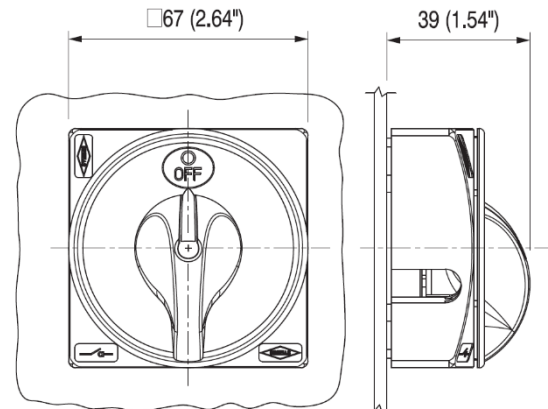
**Dimensions**



**Drilling templates**



**Plate & Knob**



### Cod. DS0634RQK6

Technical data IEC 947-3 EN 60947-3			
Rated insulation voltage	Ui	V	690
Rated operating voltage	Ue	V	690
Rated impulse withstand voltage	Uimp	kV	6
Rated thermal current for open switch	Ith	A	63
Rated thermal current for enclosed switch	Ithe	A	63
Rated operation frequency		Hz	50
Power dissipation for each pole		W	3,7
Rated operating current Ie			
AC-21A Switching resistive loads, including moderate overloads	690V	Ie	A 63
AC-22A Switching of mixed resistive and inductive loads, including moderate overloads	690V	Ie	A 63
Rated operating power			
AC-23A Switching of motor loads or other highly inductive loads	400V	Kw (A)	25 (47)
	690V	Kw (A)	18,5 (19)
AC-3 Squirrel cage motors: starting, switching off motors during running	400V	Kw (A)	18,5 (33)
	690V	Kw (A)	15 (16)
Rated breaking capability in category AC-23A (cos φ=0,45)	400V	A	376
	690V	A	-
Short circuit protection			
Rated short time withstand current (1s)	Icw	A	1500
Rated short-circuit make capacity	Icm	A	2000
Rated conditional short-circuit current		kA	15
With fuses class gG	500V	A	63
Technical data UL/CSA (sec. UL508)			
General use voltage	Ue	V	600
General use current	600Vac	Ie	A 80
Rated operating power			
1 phase - 2 pole	120V	Hp/FLA	3/34
	240V	Hp/FLA	5/28
	200V	Hp/FLA	10/32
3 phase - 3 pole	240V	Hp/FLA	20/54
	480V	Hp/FLA	25/34
	600V	Hp/FLA	30/32
Line protection fuses (DS size 1: Class RK5, 600Vac, 200kA A.I.C.), (DS size 2: Class J, 600Vac)		A	225
Short Circuit Rating@600Vac		kA	10
Mechanical characteristics			
Mechanical life (120 cycles/hour)		Operations x10 <sup>6</sup>	0,1
Connecting capability with flexible wires	Min-Max	mm <sup>2</sup>	6-35
Connecting capability with solid wires	Min-Max	mm <sup>2</sup>	10-50
Connecting capability with flexible wires	Min-Max	AWG	10/01
Connecting capability with solid wires	Min-Max	AWG	08/01
Terminal screw			M5
Screw tightening torque		Nm	2,8
		lbf-in	24
Protection degree IEC 529 EN 60529			
Terminals			IP20
Handles			IP66
Ambient conditions			
Operational ambient temperature		°C	-25 ÷ +70
Storage ambient temperature		°C	-40 ÷ +85
Withstand to constant humid according to IEC 60068			sec. IEC 60068-2-78
Withstand to cycling humid according to IEC 60069			90% at 55°C