

Cod. DS0633BAL6

Standard and Approvals

- Suitable as Manual Motor Controller
- Certified UL508 and CSA C22.2 No. 14-13
- Disconnect switch according to IEC/EN 60947-3



Technical characteristics: Body

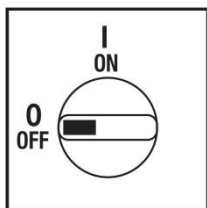
- Disconnect switch 3P
- IP20 protection degree
- Rating operational current: 63A
- Rating thermal current: 63A
- Rating insulation voltage: 690V
- Base Mounting
- Fixing:
 - with screw
 - Din rail
- Switching angle: 90°
- Positive opening double break contacts, silver alloy made.
- Self-extinguishing class V0



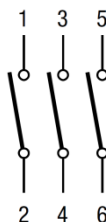
Technical characteristics: Plate and knob

- Yellow plate 67x67mm and red padlockable knob (max. 3 padlocks)
- Protection degree IP66
- Fixing:
 - 2 screw at 28mm vertical
 - 2 screw at 32mm horizontal

Plate and position



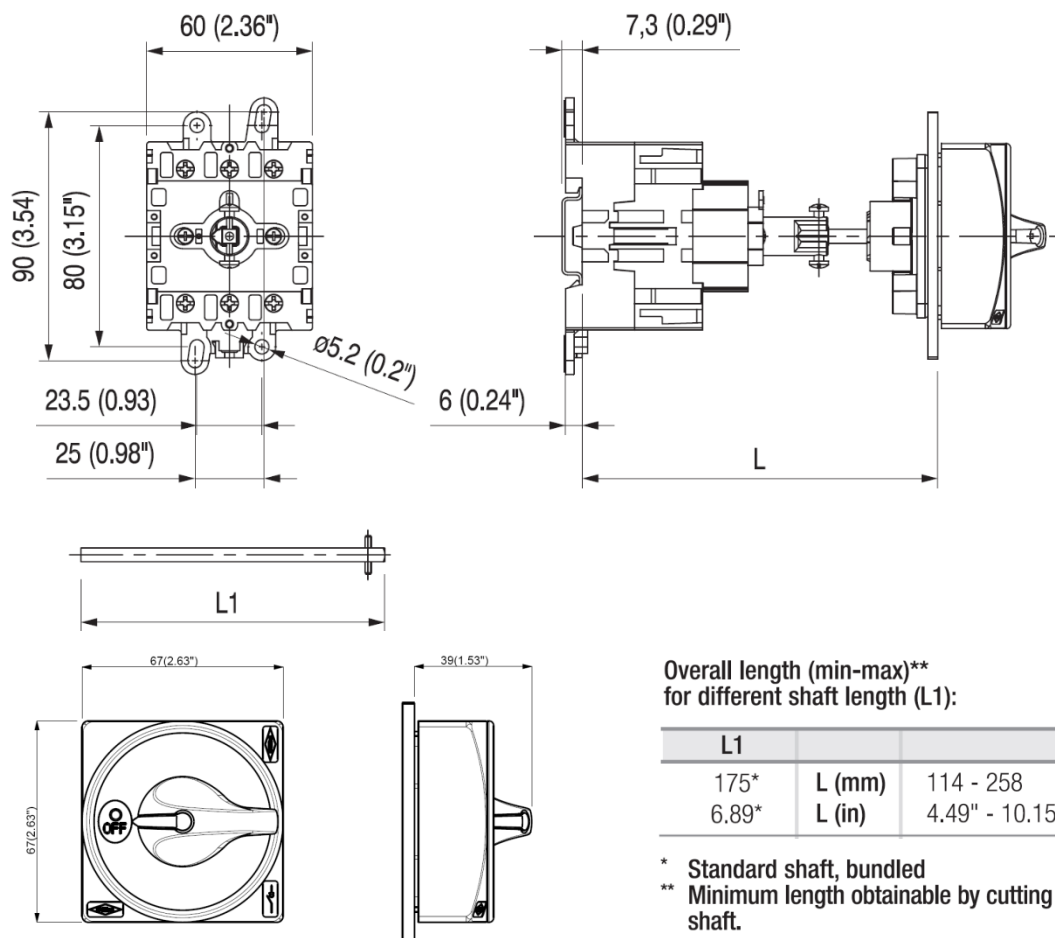
Electrical scheme



Cod. DS0633BAL6

measures in mm (in)

Dimensions



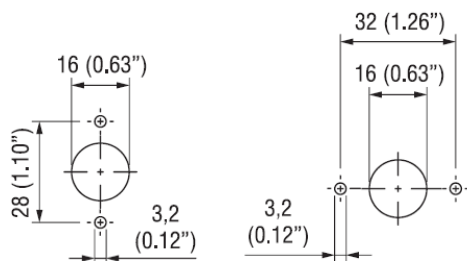
Overall length (min-max)
for different shaft length (L1):**

L1		
175*	L (mm)	114 - 258
6.89*	L (in)	4.49" - 10.15"

* Standard shaft, bundled

** Minimum length obtainable by cutting the shaft.

Drilling templates



Cod. DS0633BAL6

Technical data IEC 947-3 EN 60947-3				
Rated insulation voltage	Ui	V	690	
Rated operating voltage	Ue	V	690	
Rated impulse withstand voltage	Uimp	kV	6	
Rated thermal current for open switch	Ith	A	63	
Rated thermal current for enclosed switch	Ithe	A	63	
Rated operation frequency		Hz	50	
Power dissipation for each pole		W	3,7	
Rated operating current Ie				
AC-21A Switching resistive loads, including moderate overloads	690V	Ie	A	63
AC-22A Switching of mixed resistive and inductive loads, including moderate overloads	690V	Ie	A	63
Rated operating power				
AC-23A Switching of motor loads or other highly inductive loads	400V	Kw (A)	25 (47)	
	690V	Kw (A)	18,5 (19)	
AC-3 Squirrel cage motors: starting, switching off motors during running	400V	Kw (A)	18,5 (33)	
	690V	Kw (A)	15 (16)	
Rated breaking capability in category AC-23A (cos φ=0,45)	400V	A	376	
	690V	A	-	
Short circuit protection				
Rated short time withstand current (1s)	Icw	A	1500	
Rated short-circuit make capacity	Icm	A	2000	
Rated conditional short-circuit current		kA	15	
With fuses class gG	500V	A	63	
Technical data UL/CSA (sec. UL508)				
General use voltage		Ue	V	600
General use current	600Vac	Ie	A	80
Rated operating power				
1 phase - 2 pole	120V	Hp/FLA	3/34	
	240V	Hp/FLA	5/28	
3 phase - 3 pole	200V	Hp/FLA	10/32	
	240V	Hp/FLA	20/54	
	480V	Hp/FLA	25/34	
	600V	Hp/FLA	30/32	
Line protection fuses (DS size 1: Class RK5, 600Vac, 200kA A.I.C.), (DS size 2: Class J, 600Vac)		A	225	
Short Circuit Rating@600Vac		kA	10	
Mechanical characteristics				
Mechanical life (120 cycles/hour)	Operations x10 ⁶		0,1	
Connecting capability with flexible wires	Min-Max	mm2	6-35	
Connecting capability with solid wires	Min-Max	mm2	10-50	
Connecting capability with flexible wires	Min-Max	AWG	10/01	
Connecting capability with solid wires	Min-Max	AWG	08/01	
Terminal screw			M5	
Screw tightening torque		Nm	2,8	
		lbf-in	24	
Protection degree IEC 529 EN 60529				
Terminals			IP20	
Handles			IP66	
Ambient conditions				
Operational ambient temperature		°C	-25 ÷ +70	
Storage ambient temperature		°C	-40 ÷ +85	
Withstand to constant humid according to IEC 60068			sec. IEC 60068-2-78	
Withstand to cycling humid according to IEC 60069			90% at 55°C	