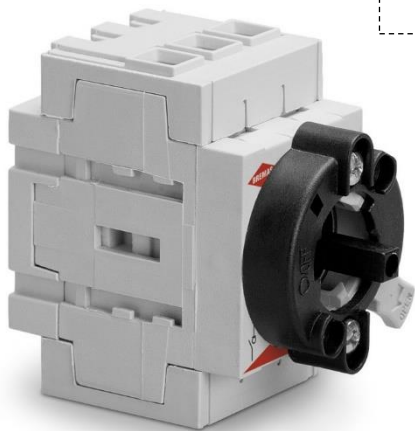


Cod. DS0323GDL6

Standard and Approvals

- Switch according to IEC/EN 60947-3
- Certified UL60947-4-1A and CAN/CSA C22.2 No. 60947-4-1-07
- Suitable as Manual Motor Controller



Technical characteristics: Body

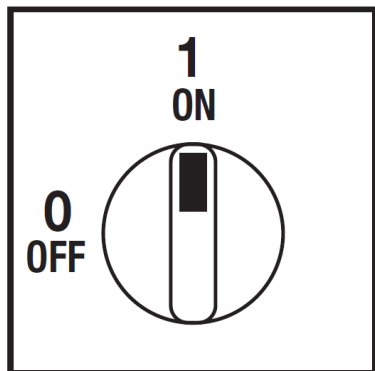
- Disconnect switch 3P
- IP20 protection degree
- Rating operational current Ie: 32A (AC-21A)
- Rating thermal current Ith: 32A
- Rating insulation voltage: 690V
- Base Mounting
- Quick fixing Ø22mm (0,87"), without screws
- Switching angle: 90°
- Positive opening double break contacts, silver alloy made.
- Self-extinguishing class V2



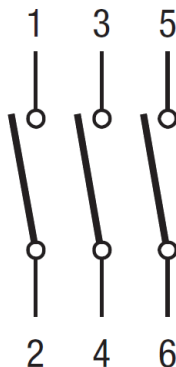
Technical characteristics: Plate and knob

- Yellow plate 67x67mm and red padlockable knob (max. 3 padlocks)
- Protection degree IP66
- Quick fixing Ø22mm (0,87"), without screws

Plate and position



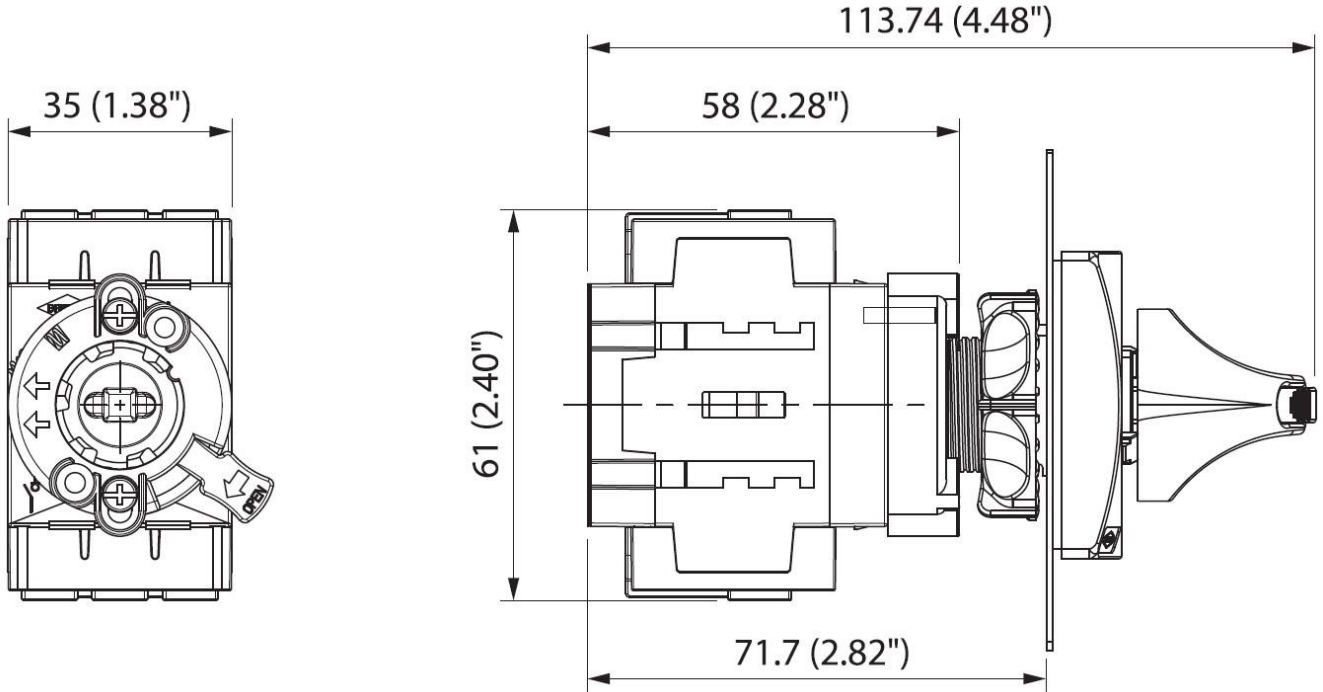
Electrical scheme



Cod. DS0323GDL6

measures in mm (in)

Dimensions



Drilling templates

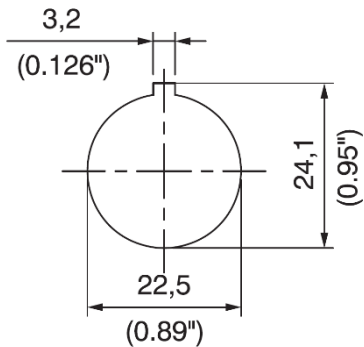
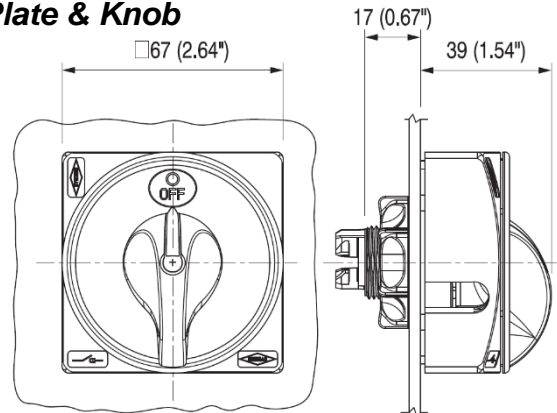


Plate & Knob



Cod. DS0323GDL6

Technical data IEC 947-3 EN 60947-3					
Rated insulation voltage		Ui	V	800	
Rated operating voltage		Ue	V	800	
Rated impulse withstand voltage		Uimp	kV	8	
Rated thermal current for open switch		Ith	A	32	
Rated thermal current for enclosed switch		Ithe	A	32	
Rated operation frequency			Hz	50/60	
Power dissipation for each pole			W	1,3	
Rated operating current Ie					
AC-21A Switching resistive loads, including moderate overloads	690V	Ie	A	32	
AC-22A Switching of mixed resistive and inductive loads, including moderate overloads	690V	Ie	A	32	
Rated operating power					
AC-23A Switching of motor loads or other highly inductive loads	400V		Kw (A)	11 (22)	
	690V		Kw (A)	11 (16)	
AC-3 Squirrel cage motors: starting, switching off motors during running	400V		Kw (A)	7,5 (14)	
	690V		Kw (A)	7,5 (8)	
Rated breaking capability in category AC-23A (cos φ=0,45)	400V		A	176	
	690V		A	128	
Short circuit protection					
Rated short time withstand current (1s)		Icw	A	400	
Rated short-circuit make capacity		Icm	A	750	
Rated conditional short-circuit current			kA	10	
With fuses class gG			500V	A	32
Technical data UL/CSA (sec. UL508)					
General use voltage		Ue	V	600	
General use current	600Vac	Ie	A	30	
Rated operating power					
1 phase - 2 pole	120V		Hp/FLA	1,5 / -	
	240V		Hp/FLA	3 / -	
	200V		Hp/FLA	- / -	
3 phase - 3 pole	240V		Hp/FLA	7,5 / 22	
	480V		Hp/FLA	15 / 21	
	600V		Hp/FLA	20 / 22	
Line protection fuses (DS size 1: Class RK5, 600Vac, 200kA A.I.C.), (DS size 2: Class J, 600Vac)			A	30	
Short Circuit Rating@600Vac			kA	5	
Mechanical characteristics					
Mechanical life (120 cycles/hour)		Operations x10 ⁶		0,03	
Connecting capability with flexible wires		Min-Max	mm ²	1,5 - 10	
Connecting capability with solid wires		Min-Max	mm ²	1,5 - 16	
Connecting capability with flexible wires		Min-Max	AWG	16/08	
Connecting capability with solid wires		Min-Max	AWG	16/06	
Terminal screw				M4	
Screw tightening torque			Nm	1,7	
			lbf-in	12	
Protection degree IEC 529 EN 60529					
Terminals				IP20	
Handles				IP66	
Ambient conditions					
Operational ambient temperature			°C	-25 ÷ +55	
Storage ambient temperature			°C	-25 ÷ +55	
Withstand to constant humid according to IEC 60068				sec. IEC 60068-2-78	
Withstand to cycling humid according to IEC 60069				sec. IEC 60068-2-30	