

**Cod. DS0323BFK6**



### Standard and Approvals

- Switch according to IEC/EN 60947-3
- Certified UL60947-4-1A and CAN/CSA C22.2 No. 60947-4-1-07
- Suitable as Manual Motor Controller



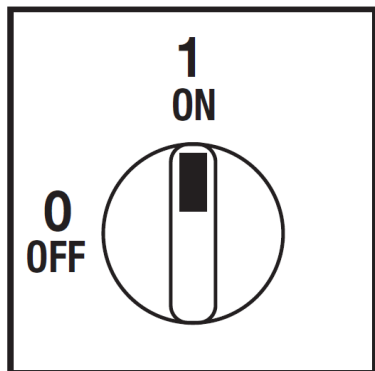
### Technical characteristics: Body

- Disconnect switch 3P
- IP20 protection degree
- Rating operational current Ie: 32A (AC-21A)
- Rating thermal current Ith: 32A
- Rating insulation voltage: 690V
- Base Mounting
- Fixing:
  - with screws
  - Din rail
- Switching angle: 90°
- Positive opening double break contacts, silver alloy made.
- Self-extinguishing class V2

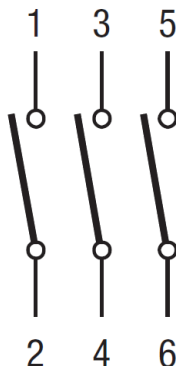
### Technical characteristics: Plate and knob

- Grey plate 67x67mm and black padlockable knob (max. 3 padlocks)
- Protection degree IP66
- Quick fixing Ø22mm (0,87")

### Plate and position



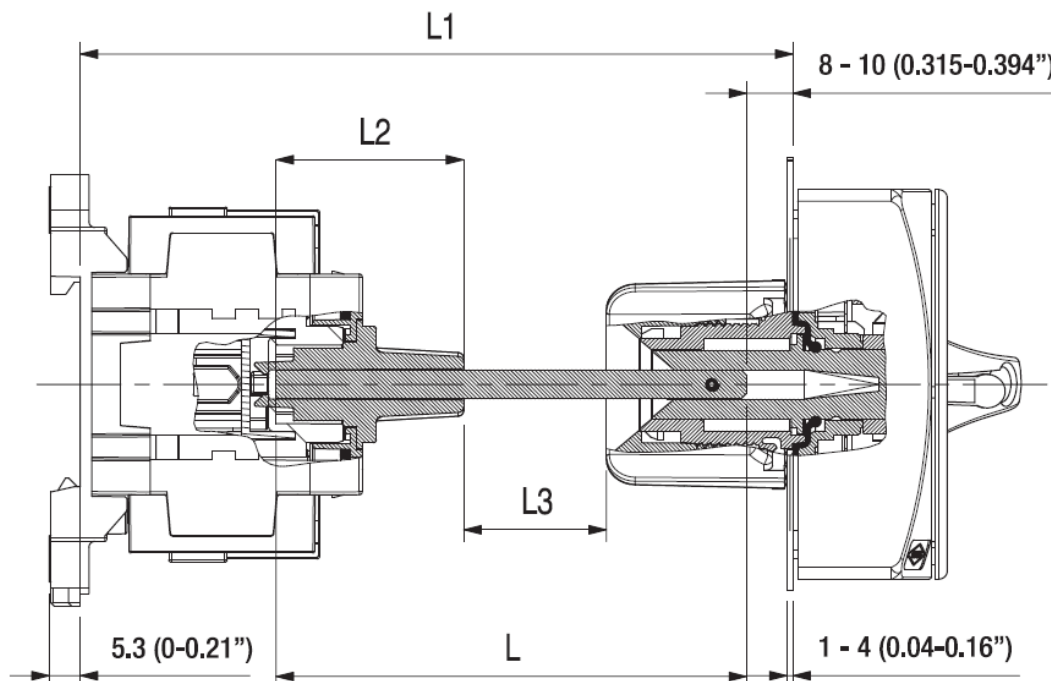
### Electrical scheme



**Cod. DS0323BFK6**

measures in mm (in)

**Dimensions**



To determine the cut length L of the shaft,  
 consider the following guidelines:

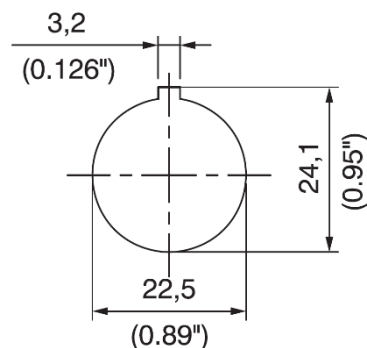
$L3 \geq 1\text{mm}$

$12\text{mm} \leq L2 \leq 32\text{mm}$

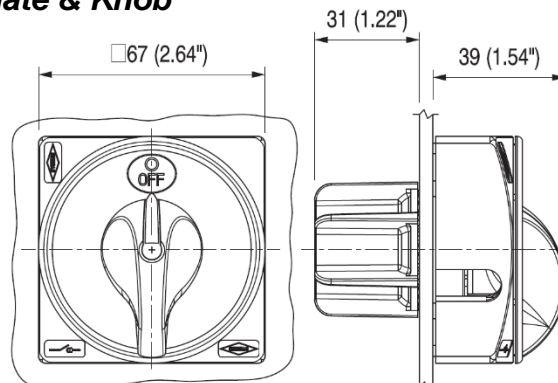
L min.	L max.
92 [3.63]	227 [8.94]

In practice:  $L1 - 61\text{mm} \leq L \leq L1 - 41\text{mm}$

**Drilling templates**



**Plate & Knob**



### Cod. DS0323BFK6

Technical data IEC 947-3 EN 60947-3				
Rated insulation voltage	Ui	V	800	
Rated operating voltage	Ue	V	800	
Rated impulse withstand voltage	Uimp	kV	8	
Rated thermal current for open switch	Ith	A	32	
Rated thermal current for enclosed switch	Ithe	A	32	
Rated operation frequency		Hz	50/60	
Power dissipation for each pole		W	1,3	
Rated operating current Ie				
AC-21A Switching resistive loads, including moderate overloads	690V	Ie	A	32
AC-22A Switching of mixed resistive and inductive loads, including moderate overloads	690V	Ie	A	32
Rated operating power				
AC-23A Switching of motor loads or other highly inductive loads	400V	Kw (A)	11 (22)	
	690V	Kw (A)	11 (16)	
AC-3 Squirrel cage motors: starting, switching off motors during running	400V	Kw (A)	7,5 (14)	
	690V	Kw (A)	7,5 (8)	
Rated breaking capability in category AC-23A (cos φ=0,45)	400V	A	176	
	690V	A	128	
Short circuit protection				
Rated short time withstand current (1s)	Icw	A	400	
Rated short-circuit make capacity	Icm	A	750	
Rated conditional short-circuit current		kA	10	
With fuses class gG	500V	A	32	
Technical data UL/CSA (sec. UL508)				
General use voltage	Ue	V	600	
General use current	600Vac	Ie	A	30
Rated operating power				
1 phase - 2 pole	120V	Hp/FLA	1,5 / -	
	240V	Hp/FLA	3 / -	
3 phase - 3 pole	200V	Hp/FLA	- / -	
	240V	Hp/FLA	7,5 / 22	
	480V	Hp/FLA	15 / 21	
	600V	Hp/FLA	20 / 22	
Line protection fuses (DS size 1: Class RK5, 600Vac, 200kA A.I.C.), (DS size 2: Class J, 600Vac)		A	30	
Short Circuit Rating@600Vac		kA	5	
Mechanical characteristics				
Mechanical life (120 cycles/hour)	Operations x10 <sup>6</sup>		0,03	
Connecting capability with flexible wires	Min-Max	mm2	1,5 - 10	
Connecting capability with solid wires	Min-Max	mm2	1,5 - 16	
Connecting capability with flexible wires	Min-Max	AWG	16/08	
Connecting capability with solid wires	Min-Max	AWG	16/06	
Terminal screw			M4	
Screw tightening torque		Nm	1,7	
		lbf-in	12	
Protection degree IEC 529 EN 60529				
Terminals			IP20	
Handles			IP66	
Ambient conditions				
Operational ambient temperature		°C	-25 ÷ +55	
Storage ambient temperature		°C	-25 ÷ +55	
Withstand to constant humid according to IEC 60068			sec. IEC 60068-2-78	
Withstand to cycling humid according to IEC 60069			sec. IEC 60068-2-30	