

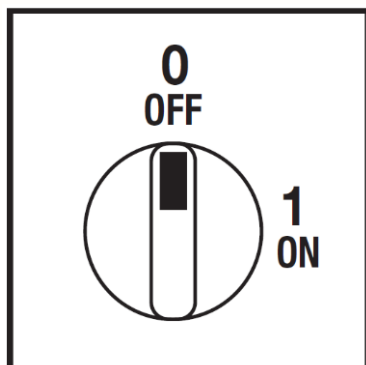
**Cod. CR04000G4RL6**



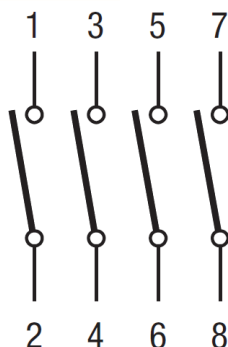
(Image is purely indicative)



### Positions



### Electrical diagram



### Electrical function

	<b>0</b>							CR	
	<b>1</b>	X	X	X	X			CA	90°
Contact		1	2	3	4	5	6	7	8
Element		<b>1</b>		<b>2</b>				Angle	

### Standard and Approvals

- Switch according to IEC/EN 60947-3
- Certified UL60947-4-1A and CAN/CSA C22.2 No. 60947-4-1-07
- Suitable as Manual Motor Controller



### Technical characteristics: Body

- ON-OFF switch 4 pole with padlockable handle
- IP20 Protection degree
- Rated operational current Ie: 40A (AC-21A)
- Rated thermal current Ith: 50A
- Rated insulation voltage Ui: 690V
- Rear mounting
- Fixing with 2 screw at 28mm vertical
- Switching angle: 90°
- Class V2 self-extinguishing thermoplastic housing
- Assembled with metal shaft and threaded stud bolts to ensure maximum operating reliability
- Positive opening double break contacts, silver alloy made.

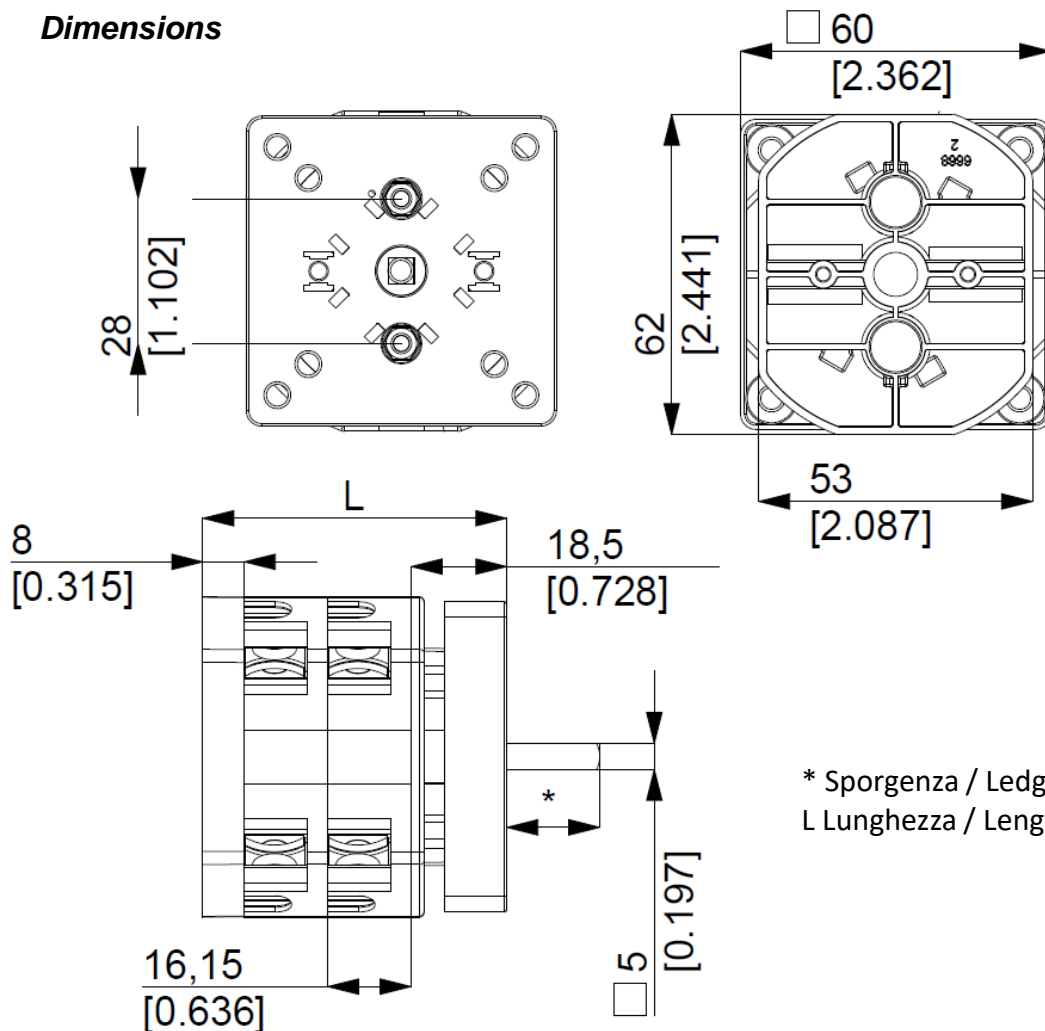
### Technical characteristics: Knob

- Yellow plate 67x67mm and red padlockable knob (max. 3 padlocks)
- IP66 Protection degree
- Fixing with 2 screw at 28mm vertical

**Cod. CR04000G4RL6**

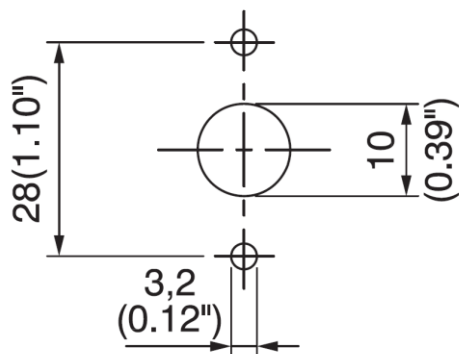
measures in mm (in)

**Dimensions**

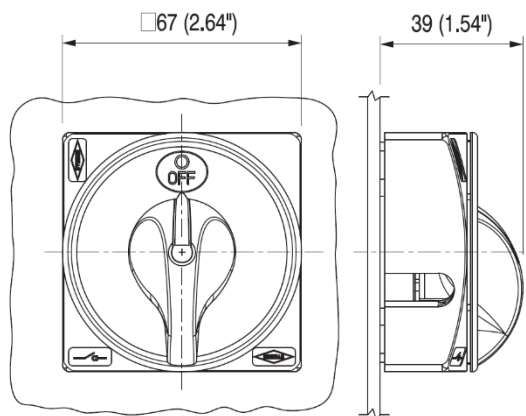


\* Sporgenza / Ledge 18,00mm  
L Lunghezza / Length 58,80mm

**Drilling templates**



**Plate & Knob**



### Cod. CR04000G4RL6

<b>Technical data IEC 947-3 EN 60947-3</b>				
Rated insulation voltage	Ui	V		690
Rated operating voltage	Ue	V		690
Rated impulse withstand voltage	Uimp	kV		6
Rated thermal current for open switch	Ith	A		50
Rated thermal current for enclosed switch	Ithe	A		50
Rated operation frequency		Hz		50/60
Power dissipation for each pole		W		1,3
<b>Rated operating current</b>				
AC-21A Switching resistive loads, including moderate overloads	Ie	A		40
AC-22A Switching of mixed resistive and inductive loads, including moderate overloads	Ie	A		32
AC-20A Connecting and disconnecting under no loads conditions				-
<b>Rated operating power</b>				
AC-23A Switching of motor loads or other highly inductive loads 3 phase - 3 pole	230V	Kw (A)		10 (32)
	400V	Kw (A)		18,5 (30)
	500V	Kw (A)		18,5 (27)
	690V	Kw (A)		18,5 (19)
AC-23A Switching of motor loads or other highly inductive loads 1 phase - 2 pole	110V	Kw (A)		3 (34)
	230V	Kw (A)		5,5 (30)
AC-3 Squirrel cage motors: starting, swtiching off motors during running 3 phase - 3 pole	230V	Kw (A)		7,5 (24)
	400V	Kw (A)		15 (27)
	500V	Kw (A)		15 (22)
	690V	Kw (A)		16 (16)
AC-3 Squirrel cage motors: starting, swtiching off motors during running 1 phase - 2 pole	110V	Kw (A)		2,2 (25)
	230V	Kw (A)		4,5 (25)
	400V	Kw (A)		-
AC-4 Squirrel cage motors: starting, pluggin, inching	230V	Kw (A)		3 (10)
	400V	Kw (A)		5,5 (10)
AC-15 Control of a.c electromagnetic loads	230V	A		10
	400V	A		8
Rated breaking capability in AC-23A (cos φ=0,45)	230V	A		256
	400V	A		240
<b>Short circuit protection</b>				
Rated short time withstand current	Icw	A		500
Rated short-circuit make capacity	Icm	A		2000
Rated conditional short-circuit current	-	kA		10
With fuses class gG	500V	A		50
<b>Technical data UL/CSA</b>				
Rated operating voltage	Ue	UL/CSA V		600/600
General use current	Ie	UL/CSA A		40/32
Short circuit rating @600Vac		Arms		5000
Fuse size (Class RK5, 600Vac, 200kA A.I.C.)		A		60
<b>Rated operating power</b>				
1 phase - 2 pole	120V	Hp (A)		3 (34)/2,5
	240V	Hp (A)		7,5 (40)/4,5
3 phase - 3 pole	200V	Hp (A)		10 (32,2)/-
	240V	Hp (A)		15 (42)/9,5
	480V	Hp (A)		20 (27)/20
	600V	Hp (A)		20 (22)/25
<b>Mechanical characteristics</b>				
Panel tickness	Max	mm		4
Mechanical life		Cycles x 10 <sup>6</sup>		1,5
		Cycles/hr		120
<b>Connection according to IEC 9471-1 and EN 50947-1</b>				
Connecting capability	With flexible wires	Min-Max	mm <sup>2</sup>	2x2,5-10
		Min-Max	AWG	14-8
	With solid wires	Min-Max	mm <sup>2</sup>	2x2,5-16
			Type	M4
Connection terminal screw dimensions			Nm	1,2
Screw tightening torque				
<b>Protection degree IEC 529 EN 60529</b>				
Terminals		IP		20
<b>Ambient conditions</b>				
Operating ambient temperature		°C		-25 ÷ +55
Storage ambient temprature		°C		-30 ÷ +70
Withstand to constant humid according to IEC 60068				2-78
Withstand to cyclic humid according to IEC 60068				2-30