

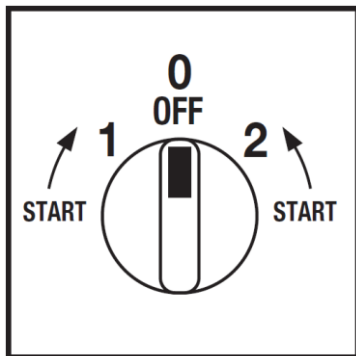
Cod. CR0250032RT6



(Image is purely indicative)



Positions



Standard and Approvals

- Switch according to IEC/EN 60947-3
- Certified UL60947-4-1A and CAN/CSA C22.2 No. 60947-4-1-07
- Suitable as Manual Motor Controller



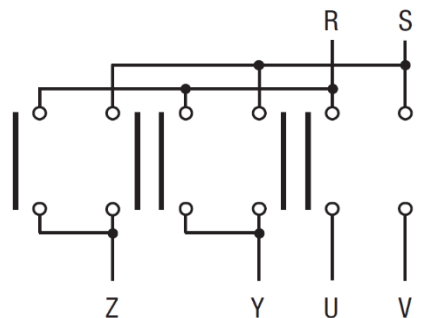
Technical characteristics: Body

- Reversing switch single-phase motor + aux phase
- IP20 Protection degree
- Rated operational current Ie: 25A (AC-21A)
- Rated thermal current Ith: 32A
- Rated insulation voltage Ui: 690V
- Rear mounting
- Fixing with 2 screw at 28mm vertical
- Switching angle: 45°
- Class V2 self-extinguishing thermoplastic housing
- Assembled with metal shaft and threaded stud bolts to ensure maximum operating reliability
- Positive opening double break contacts, silver alloy made.

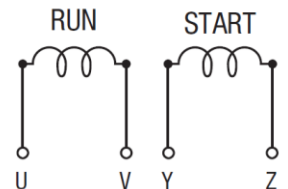
Technical characteristics: Knob

- Grey plate 67x67mm and black knob
- IP66 Protection degree
- Fixing:- 2 screw at 28mm vertical

Electrical diagram and function

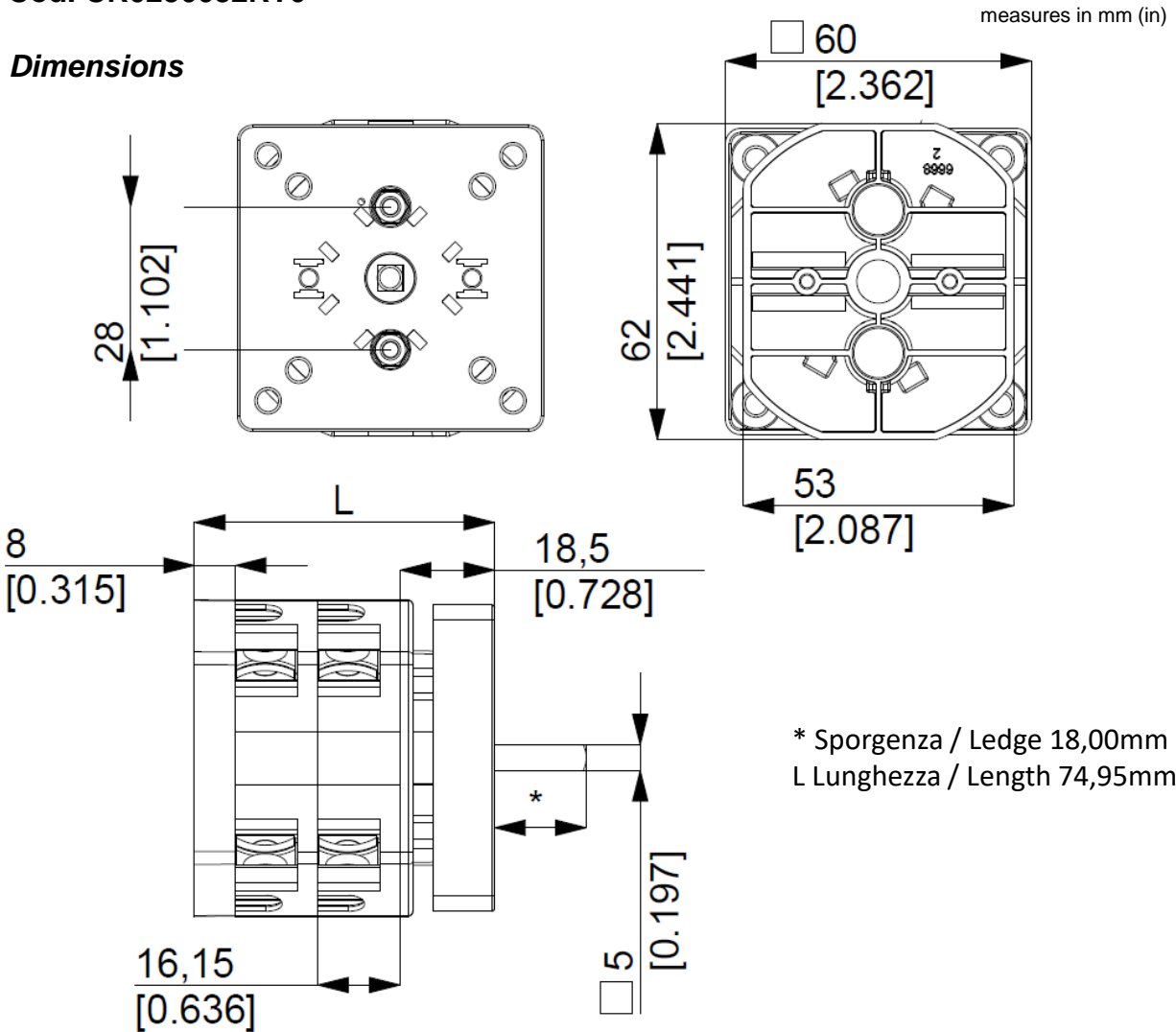


	Avv		X	X		X	X	X				CR	45°
	1											CA	
	0											CQ	
	1					X	X	X	X				
	Avv	X				X	X	X	X				
Contact	1	2	3	4	5	6	7	8	9	10	11	12	Angle
Element	1	2	3										



Cod. CR0250032RT6

Dimensions



Drilling templates

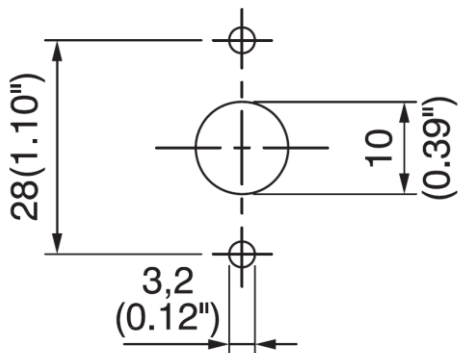
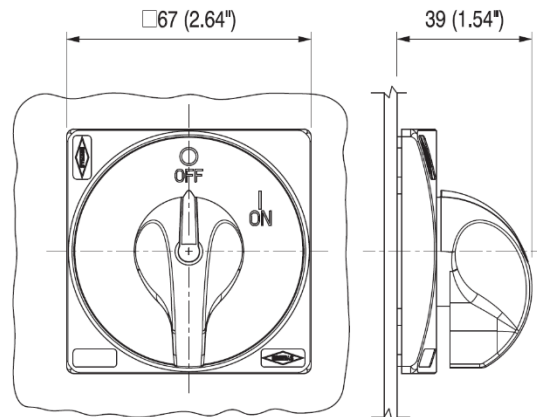


Plate & Knob



Cod. CR0250032RT6

Technical data IEC 947-3 EN 60947-3					
Rated insulation voltage	Ui	V	690		
Rated operating voltage	Ue	V	690		
Rated impulse withstand voltage	Uimp	kV	6		
Rated thermal current for open switch	Ith	A	32		
Rated thermal current for enclosed switch	Ithe	A	32		
Rated operation frequency		Hz	50/60		
Power dissipation for each pole		W	1		
Rated operating current					
AC-21A Switching resistive loads, including moderate overloads	le	A	25		
AC-22A Switching of mixed resistive and inductive loads, including moderate overloads	le	A	20		
AC-20A Connecting and disconnecting under no loads conditions			-		
Rated operating power					
AC-23A Switching of motor loads or other highly inductive loads 3 phase - 3 pole	230V	Kw (A)	7,5 (24)		
	400V	Kw (A)	11 (20)		
	500V	Kw (A)	11 (15)		
	690V	Kw (A)	11 (11)		
AC-23A Switching of motor loads or other highly inductive loads 1 phase - 2 pole	110V	Kw (A)	2,2 (25)		
	230V	Kw (A)	3,7 (20)		
AC-3 Squirrel cage motors: starting, switching off motors during running 3 phase - 3 pole	230V	Kw (A)	5,5 (17)		
	400V	Kw (A)	9,5 (16)		
	500V	Kw (A)	9,5 (12,5)		
	690V	Kw (A)	8,5 (10)		
AC-3 Squirrel cage motors: starting, switching off motors during running 1 phase - 2 pole	110V	Kw (A)	1,5 (17)		
	230V	Kw (A)	3 (17)		
	400V	Kw (A)	-		
AC-4 Squirrel cage motors: starting, plugging, inching	230V	Kw (A)	2,2 (17)		
	400V	Kw (A)	3 (5,5)		
AC-15 Control of a.c electromagnetic loads	230V	A	8		
	400V	A	6		
	400V	A	192		
Rated breaking capability in AC-23A (cos φ=0,45)	400V	A	160		
Short circuit protection					
Rated short time withstand current	Icw	A	400		
Rated short-circuit make capacity	Icm	A	2000		
Rated conditional short-circuit current		kA	10		
With fuses class gG	500V	A	35		
Technical data UL/CSA					
Rated operating voltage	Ue	UL/CSA V	600/600		
General use current	le	UL/CSA A	25/25		
Short circuit rating @600Vac		Arms	5000		
Fuse size (Class RKS, 600Vac, 200KA A.I.C.)		A	60		
Rated operating power					
1 phase - 2 pole	120V	Hp (A)	2 (24)/-		
	240V	Hp (A)	3 (17)/6		
3 phase - 3 pole	200V	Hp (A)	5 (17,5)/-		
	240V	Hp (A)	7,5 (22)/-		
	480V	Hp (A)	10 (14)/-		
	600V	Hp (A)	10 (11)/15		
Mechanical characteristics					
Panel thickness	Max	mm	4		
Mechanical life		Cycles x 10 ⁶	1,5		
		Cycles/hr	120		
Connection according to IEC 9471-1 and EN 50947-1					
Connecting capability	With flexible wires	Min-Max	mm ²	2x2,5-10	
		Min-Max	AWG	14-8	
Connecting capability	With solid wires	Min-Max	mm ²	2x2,5-16	
			Type	M4	
Connection terminal screw dimensions				Nm	1,7
Protection degree IEC 529 EN 60529					
Terminals		IP			20
Ambient conditions					
Operating ambient temperature		°C			-25 ÷ +55
Storage ambient temperature		°C			-30 ÷ +70
Withstand to constant humid according to IEC 60068					2-78
Withstand to cyclic humid according to IEC 60068					2-30