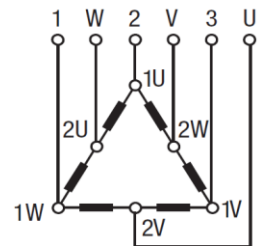
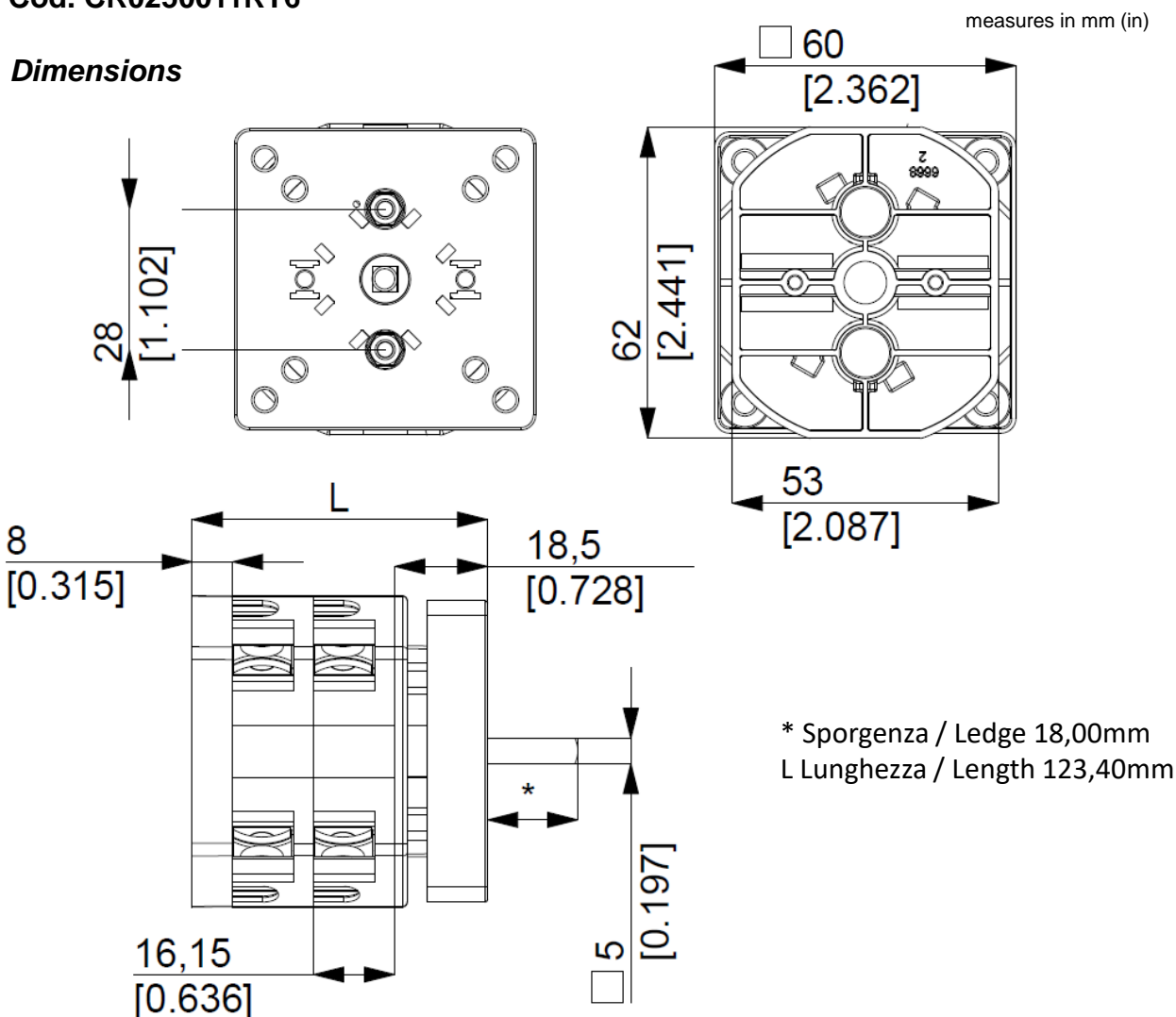


CE UK CA cUL US LISTED

[illegible]

Cod. CR0250011RT6

Dimensions



Drilling templates

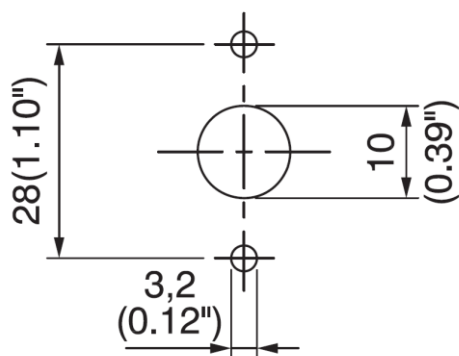
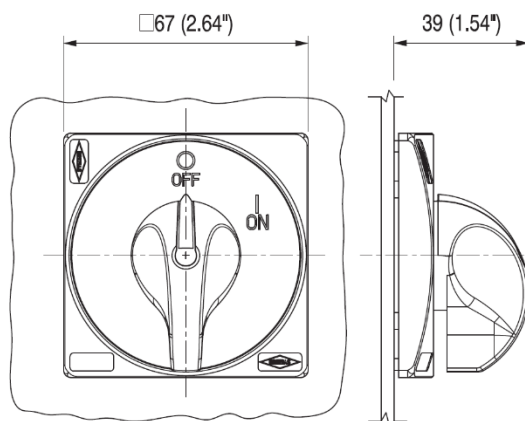


Plate & Knob



Cod. CR0250011RT6

Technical data IEC 947-3 EN 60947-3				
Rated insulation voltage	Ui	V	690	
Rated operating voltage	Ue	V	690	
Rated impulse withstand voltage	Uimp	kV	6	
Rated thermal current for open switch	Ith	A	32	
Rated thermal current for enclosed switch	Ithe	A	32	
Rated operation frequency		Hz	50/60	
Power dissipation for each pole		W	1	
Rated operating current				
AC-21A Switching resistive loads, including moderate overloads	Ie	A	25	
AC-22A Switching of mixed resistive and inductive loads, including moderate overloads	Ie	A	20	
AC-20A Connecting and disconnecting under no loads conditions			-	
Rated operating power				
AC-23A Switching of motor loads or other highly inductive loads 3 phase - 3 pole	230V	Kw (A)	7,5 (24)	
	400V	Kw (A)	11 (20)	
	500V	Kw (A)	11 (15)	
	690V	Kw (A)	11 (11)	
AC-23A Switching of motor loads or other highly inductive loads 1 phase - 2 pole	110V	Kw (A)	2,2 (25)	
	230V	Kw (A)	3,7 (20)	
AC-3 Squirrel cage motors: starting, switching off motors during running 3 phase - 3 pole	230V	Kw (A)	5,5 (17)	
	400V	Kw (A)	9,5 (16)	
	500V	Kw (A)	9,5 (12,5)	
	690V	Kw (A)	8,5 (10)	
AC-3 Squirrel cage motors: starting, switching off motors during running 1 phase - 2 pole	110V	Kw (A)	1,5 (17)	
	230V	Kw (A)	3 (17)	
	400V	Kw (A)	-	
AC-4 Squirrel cage motors: starting, pluggign, inching	230V	Kw (A)	2,2 (17)	
	400V	Kw (A)	3 (5,5)	
AC-15 Control of a.c electromagnetic loads	230V	A	8	
	400V	A	6	
	230V	A	192	
Rated breaking capability in AC-23A (cos φ=0,45)	400V	A	160	
Short circuit protection				
Rated short time withstand current	Icw	A	400	
Rated short-circuit make capacity	Icm	A	2000	
Rated conditional short-circuit current	-	kA	10	
With fuses class gG	500V	A	35	
Technical data UL/CSA				
Rated operating voltage	Ue	UL/CSA V	600/600	
General use current	Ie	UL/CSA A	25/25	
Short circuit rating @600Vac		Arms	5000	
Fuse size (Class RKS, 600Vac, 200kA A.I.C.)		A	60	
Rated operating power				
1 phase - 2 pole	120V	Hp (A)	2 (24)/-	
	240V	Hp (A)	3 (17)/6	
3 phase - 3 pole	200V	Hp (A)	5 (17,5)/-	
	240V	Hp (A)	7,5 (22)/-	
	480V	Hp (A)	10 (14)/-	
	600V	Hp (A)	10 (11)/15	
Mechanical characteristics				
Panel thickness	Max	mm	4	
Mechanical life		Cycles x 10 ⁶	1,5	
		Cycles/hr	120	
Connection according to IEC 9471-1 and EN 50947-1				
Connecting capability	With flexible wires	Min-Max	mm ²	2x2,5-10
		Min-Max	AWG	14-8
Connection terminal screw dimensions	With solid wires	Min-Max	mm ²	2x2,5-16
		Type		M4
Screw tightening torque		Nm		1,7
Protection degree IEC 529 EN 60529				
Terminals		IP		20
Ambient conditions				
Operating ambient temperature		°C		-25 ÷ +55
Storage ambient temperature		°C		-30 ÷ +70
Withstand to constant humid according to IEC 60068				2-78
Withstand to cyclic humid according to IEC 60068				2-30