

Cod. CR02000G4BL6



(Image is purely indicative)



Standard and Approvals

- Switch according to IEC/EN 60947-3
- Certified UL60947-4-1A and CAN/CSA C22.2 No. 60947-4-1-07
- Suitable as Manual Motor Controller



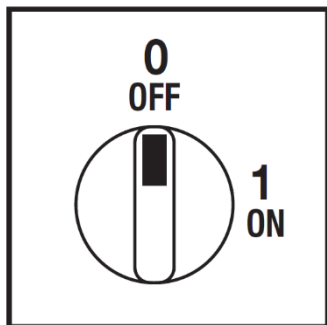
Technical characteristics: Body

- ON-OFF switch 4 pole with padlockable handle
- IP20 Protection degree
- Rated operational current Ie: 20A (AC-21A)
- Rated thermal current Ith: 25A
- Rated insulation voltage Ui: 690V
- Base mounting
- Fixing with 2 screw at 28mm vertical or DIN rail
- Switching angle: 90°
- Class V2 self-extinguishing thermoplastic housing
- Assembled with metal shaft and threaded stud bolts to ensure maximum operating reliability
- Positive opening double break contacts, silver alloy made.

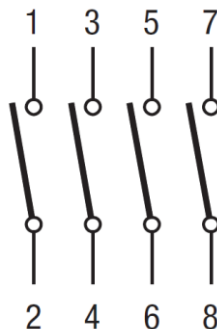
Technical characteristics: Knob

- Yellow plate 67x67mm and red padlockable knob (max. 3 padlocks)
- IP66 Protection degree
- Fixing with 2 screw at 28mm vertical or 2 screw at 36mm horizontal

Positions



Electrical diagram



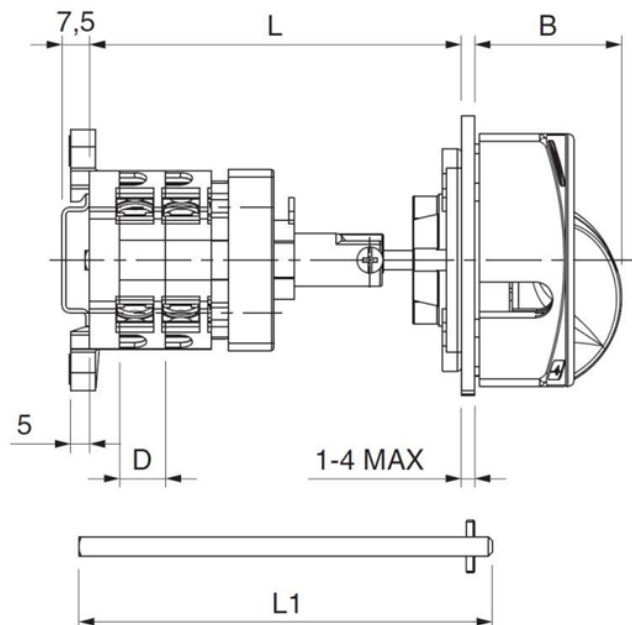
Electrical function

	0					CR	
	1	X	X	X	X	CA	90°
Contact		1	3	5	7	CQ	
Element		1		2		Angle	

Cod. CR02000G4BL6

measures in mm (in)

Dimensions



D	B	L1	L	
			L min	L max
12,2 (0.64")	39 (1.54")	175 (6.89")*	109 (4.29")	253 (9.96")
		300 (11.81")	109 (4.29")	378 (14.88")
		500 (19.69")	109 (4.29")	578 (22.76")

L: Overall length (min**/max with shaft mounted (L1))

* Standard shaft, supplied in the packaging of the base mounting switches

** L min can be obtained by cutting shaft

Drilling templates

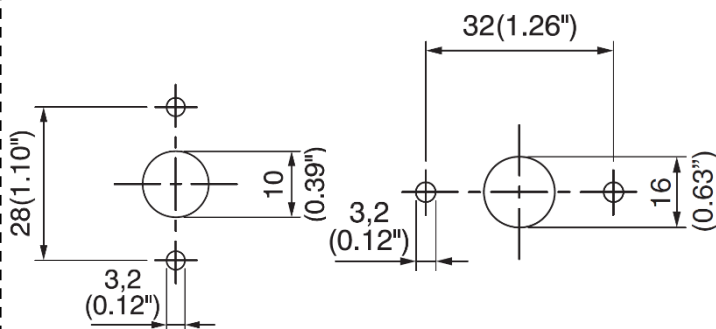
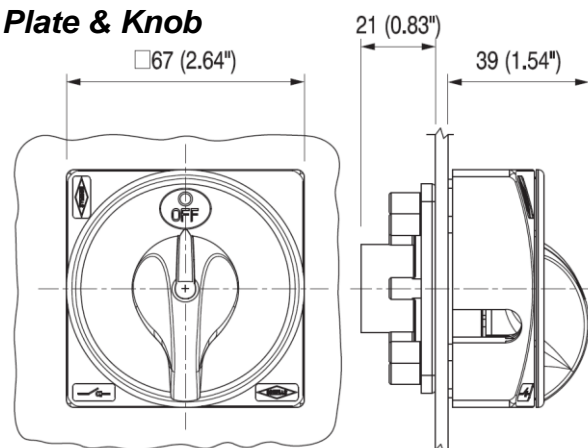


Plate & Knob



Cod. CR02000G4BL6

Technical data IEC 947-3 EN 60947-3			
Rated insulation voltage	Ui	V	690
Rated operating voltage	Ue	V	690
Rated impulse withstand voltage	Uimp	kV	6
Rated thermal current for open switch	Ith	A	25
Rated thermal current for enclosed switch	Ithe	A	25
Rated operation frequency		Hz	50/60
Power dissipation for each pole		W	1
Rated operating current			
AC-21A Switching resistive loads, including moderate overloads	Ie	A	20
AC-22A Switching of mixed resistive and inductive loads, including moderate overloads	Ie	A	16
AC-20A Connecting and disconnecting under no loads conditions			-
Rated operating power			
AC-23A Switching of motor loads or other highly inductive loads 3 phase - 3 pole	230V	Kw (A)	5,5 (17)
	400V	Kw (A)	9 (16)
	500V	Kw (A)	9 (13)
	690V	Kw (A)	9 (9)
AC-23A Switching of motor loads or other highly inductive loads 1 phase - 2 pole	110V	Kw (A)	1,1 (5)
	230V	Kw (A)	3 (17)
AC-3 Squirrel cage motors: starting, swtiching off motors during running 3 phase - 3 pole	230V	Kw (A)	4 (13)
	400V	Kw (A)	7,5 (14)
	500V	Kw (A)	7,5 (11)
	690V	Kw (A)	7,5 (8)
AC-3 Squirrel cage motors: starting, swtiching off motors during running 1 phase - 2 pole	110V	Kw (A)	1,1 (13)
	230V	Kw (A)	2,2 (12)
	400V	Kw (A)	3,7 (12)
	230V	Kw (A)	1,5 (4,5)
AC-4 Squirrel cage motors: starting, pluggign, inching	400V	Kw (A)	2,2 (2,6)
	230V	A	7
AC-15 Control of a.c electromagnetic loads	400V	A	5
	230V	A	136
Rated breaking capability in AC-23A (cos φ=0,45)	400V	A	128
Short circuit protection			
Rated short time withstand current	Icw	A	240
Rated short-circuit make capacity	Icm	A	1500
Rated conditional short-circuit current	-	kA	5
With fuses class gG	500V	A	20
Technical data UL/CSA			
Rated operating voltage	Ue	UL/CSA V	600/300
General use current	Ie	UL/CSA A	20/16
Short circuit rating @600Vac		Arms	5000
Fuse size (Class RK5, 600Vac, 200kA A.I.C.)		A	60
Rated operating power			
1 phase - 2 pole	120V	Hp (A)	1,5 (20)
	240V	Hp (A)	3 (17)
3 phase - 3 pole	200V	Hp (A)	5 (16,7)
	240V	Hp (A)	7,5 (22)
	480V	Hp (A)	10 (14)
	600V	Hp (A)	10 (11)
Mechanical characteristics			
Panel tickness	Max	mm	4
Mechanical life		Cycles x 10 ⁶	2
		Cycles/hr	120
Connection according to IEC 9471-1 and EN 50947-1			
Connecting capability	With flexible wires	Min-Max	mm ²
		Min-Max	AWG
	With solid wires	Min-Max	mm ²
		Min-Max	AWG
Connection terminal screw dimensions		Type	M3,5
Screw tightening torque		Nm	1
Protection degree IEC 529 EN 60529			
Terminals		IP	20
Ambient conditions			
Operating ambient temperature		°C	-25 ÷ +55
Storage ambient temprature		°C	-30 ÷ +70
Withstand to constant humid according to IEC 60068			2-78
Withstand to cyclic humid according to IEC 60068			2-30