

Cod. CR0200034RT6

Standard and Approvals

- Switch according to IEC/EN 60947-3
- Certified UL60947-4-1A and CAN/CSA C22.2 No. 60947-4-1-07
- Suitable as Manual Motor Controller



(Image is purely indicative)

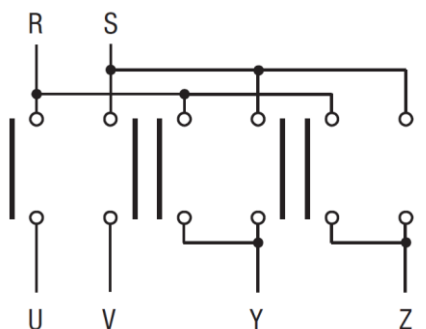
Technical characteristics: Body

- Reversing switch single-phase motor + centrif.
- IP20 Protection degree
- Rated operational current Ie: 20A
- Rated thermal current Ith: 25A
- Rated insulation voltage Ui: 690V
- Rear mounting
- Fixing with 2 screw at 28mm vertical
- Switching angle: 60°
- Class V2 self-extinguishing thermoplastic housing
- Assembled with metal shaft and threaded stud bolts to ensure maximum operating reliability
- Positive opening double break contacts, silver alloy made.

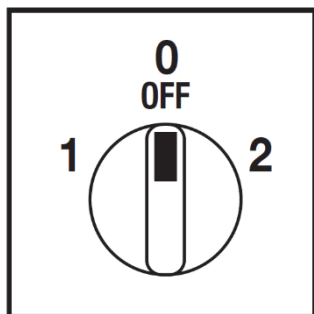
Technical characteristics: Knob

- Grey plate 67x67mm and black knob
- IP66 Protection degree
- Fixing:- 2 screw at 28mm vertical

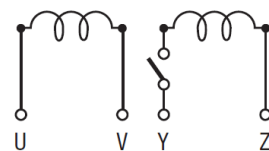
Electrical diagram and function



Positions



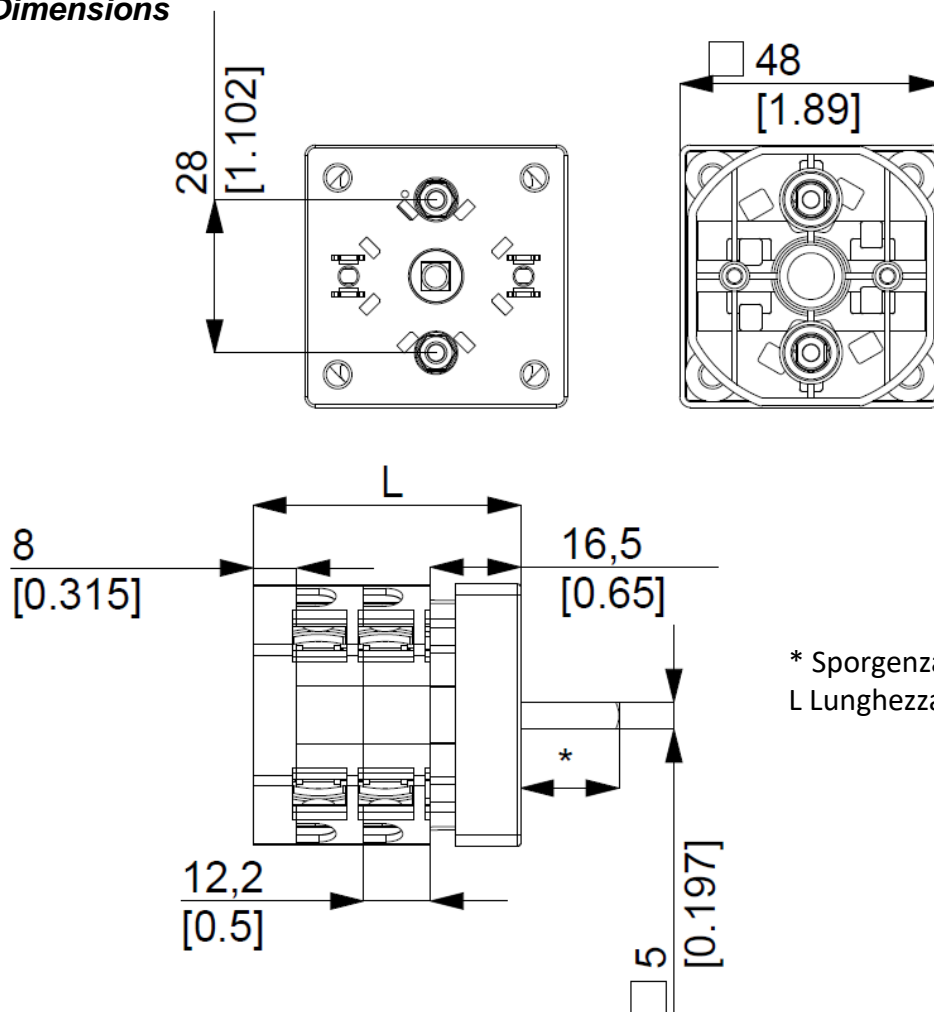
	2	×	×	×			×	CR	45°				
	0							CA					
	1	×	×	×			×	CQ					
Contact	1	2	3	4	5	6	7	8	9	10	11	12	Angle
Element	1			2			3						



Cod. CR0200034RT6

measures in mm (in)

Dimensions



* Sporgenza / Ledge 18,00mm
L Lunghezza / Length 61,00mm

Drilling templates

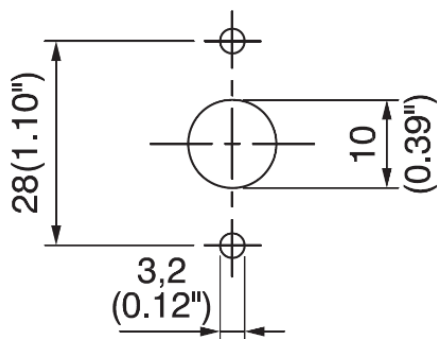
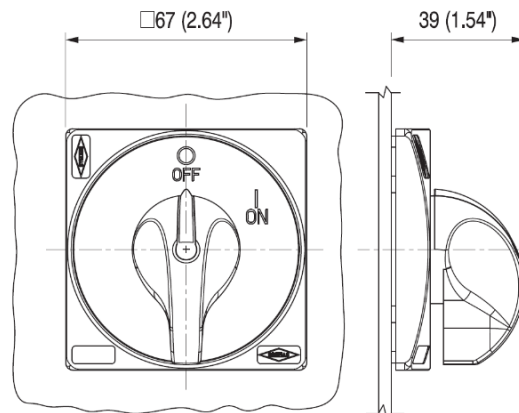


Plate & Knob



Cod. CR0200034RT6

Technical data IEC 947-3 EN 60947-3				
Rated insulation voltage	Ui	V		690
Rated operating voltage	Ue	V		690
Rated impulse withstand voltage	Uimp	kV		6
Rated thermal current for open switch	Ith	A		25
Rated thermal current for enclosed switch	Ithe	A		25
Rated operation frequency		Hz		50/60
Power dissipation for each pole		W		1
Rated operating current				
AC-21A Switching resistive loads, including moderate overloads	Ie	A		20
AC-22A Switching of mixed resistive and inductive loads, including moderate overloads	Ie	A		16
AC-20A Connecting and disconnecting under no loads conditions				-
Rated operating power				
AC-23A Switching of motor loads or other highly inductive loads 3 phase - 3 pole	230V	Kw (A)		5,5 (17)
	400V	Kw (A)		9 (16)
	500V	Kw (A)		9 (13)
	690V	Kw (A)		9 (9)
AC-23A Switching of motor loads or other highly inductive loads 1 phase - 2 pole	110V	Kw (A)		1,1 (5)
	230V	Kw (A)		3 (17)
AC-3 Squirrel cage motors: starting, swtiching off motors during running 3 phase - 3 pole	230V	Kw (A)		4 (13)
	400V	Kw (A)		7,5 (14)
	500V	Kw (A)		7,5 (11)
	690V	Kw (A)		7,5 (8)
AC-3 Squirrel cage motors: starting, swtiching off motors during running 1 phase - 2 pole	110V	Kw (A)		1,1 (13)
	230V	Kw (A)		2,2 (12)
	400V	Kw (A)		3,7 (12)
	230V	Kw (A)		1,5 (4,5)
AC-4 Squirrel cage motors: starting, pluggign, inching	400V	Kw (A)		2,2 (2,6)
	230V	A		7
AC-15 Control of a.c electromagnetic loads	400V	A		5
	230V	A		136
Rated breaking capability in AC-23A (cos φ=0,45)	400V	A		128
Short circuit protection				
Rated short time withstand current	Icw	A		240
Rated short-circuit make capacity	Icm	A		1500
Rated conditional short-circuit current	-	kA		5
With fuses class gG	500V	A		20
Technical data UL/CSA				
Rated operating voltage	Ue	UL/CSA V		600/300
General use current	Ie	UL/CSA A		20/16
Short circuit rating @600Vac		Arms		5000
Fuse size (Class RK5, 600Vac, 200kA A.I.C.)		A		60
Rated operating power				
1 phase - 2 pole	120V	Hp (A)		1,5 (20)
	240V	Hp (A)		3 (17)
3 phase - 3 pole	200V	Hp (A)		5 (16,7)
	240V	Hp (A)		7,5 (22)
	480V	Hp (A)		10 (14)
	600V	Hp (A)		10 (11)
Mechanical characteristics				
Panel tickness	Max	mm		4
Mechanical life		Cycles x 10 ⁶		2
		Cycles/hr		120
Connection according to IEC 9471-1 and EN 50947-1				
Connecting capability	With flexible wires	Min-Max	mm ²	2x1,5-4
		Min-Max	AWG	16-10
	With solid wires	Min-Max	mm ²	2x1,5-6
			Type	M3,5
Connection terminal screw dimensions			Nm	1
Screw tightening torque				
Protection degree IEC 529 EN 60529				
Terminals		IP		20
Ambient conditions				
Operating ambient temperature		°C		-25 ÷ +55
Storage ambient temprature		°C		-30 ÷ +70
Withstand to constant humid according to IEC 60068				2-78
Withstand to cyclic humid according to IEC 60068				2-30