

Cod. CR0160006RT6



(Image is purely indicative)

Standard and Approvals

- Switch according to IEC/EN 60947-3
- Certified UL60947-4-1A and CAN/CSA C22.2 No. 60947-4-1-07
- Suitable as Manual Motor Controller



Technical characteristics: Body

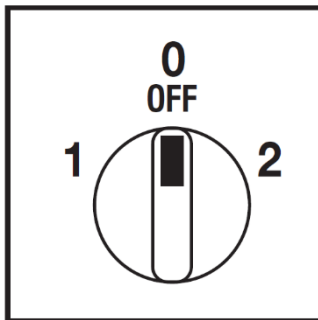
- Change-over switch 2 pole
- IP20 Protection degree
- Rated operational current Ie: 16A
- Rated thermal current Ith: 20A
- Rated insulation voltage Ui: 690V
- Rear mounting
- Fixing with 2 screw at 28mm vertical
- Switching angle: 60°
- Class V2 self-extinguishing thermoplastic housing
- Assembled with metal shaft and threaded stud bolts to ensure maximum operating reliability
- Positive opening double break contacts, silver alloy made.

Technical characteristics: Knob

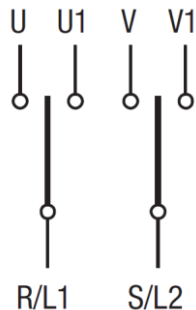
- Grey plate 67x67mm and black knob
- IP66 Protection degree
- Fixing:- 2 screw at 28mm vertical



Positions



Electrical diagram



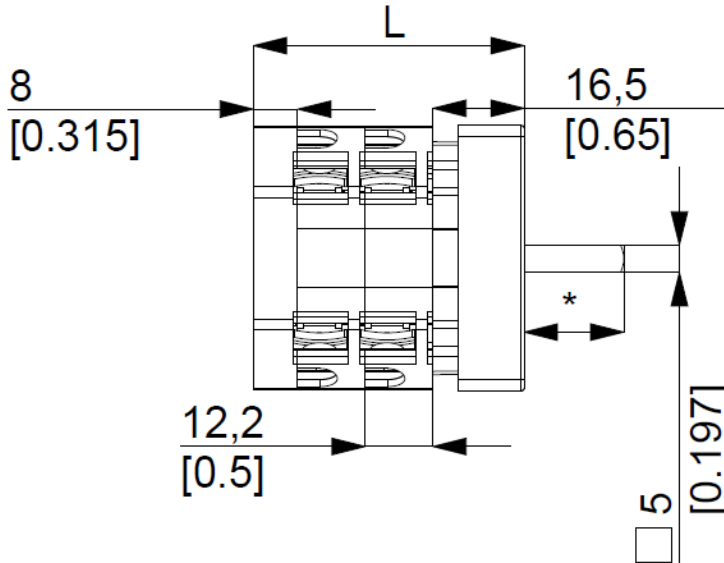
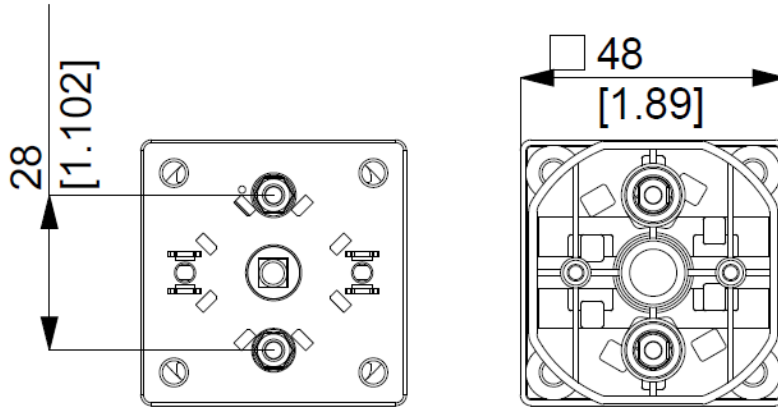
Electrical function

| | | | | | | | | | |
|---------|----------|----------|----------|----------|----------|----------------|-----|---|-------|
| | 2 | | X | | X | CR CA CQ | 60° | | |
| | 0 | | | | | | | | |
| | 1 | X | | X | | | | | |
| Contact | | 1 | 2 | 3 | 4 | 5 | 6 | 7 | 8 |
| Element | | 1 | | | | 2 | | | Angle |

Cod. CR0160006RT6

measures in mm (in)

Dimensions



* Sporgenza / Ledge 18,00mm
L Lunghezza / Length 48,90mm

Drilling templates

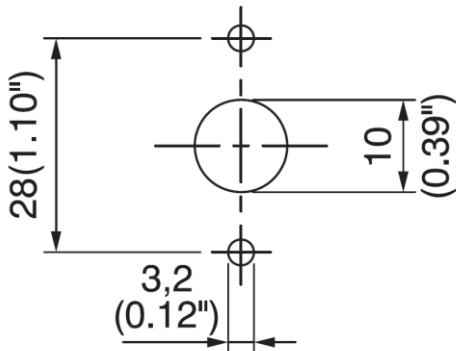
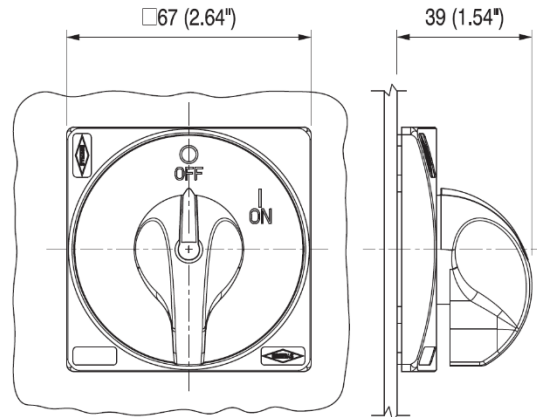


Plate & Knob



Cod. CR0160006RT6

| Technical data IEC 947-3 EN 60947-3 | | | | |
|---|---------------------|--------------------------|-----------------|---------|
| Rated insulation voltage | Ui | V | 690 | |
| Rated operating voltage | Ue | V | 690 | |
| Rated impulse withstand voltage | Uimp | kV | 6 | |
| Rated thermal current for open switch | Ith | A | 20 | |
| Rated thermal current for enclosed switch | Ithe | A | 20 | |
| Rated operation frequency | | Hz | 50/60 | |
| Power dissipation for each pole | | W | 0,5 | |
| Rated operating current | | | | |
| AC-21A Switching resistive loads, including moderate overloads | le | A | 16 | |
| AC-22A Switching of mixed resistive and inductive loads, including moderate overloads | le | A | 16 | |
| AC-20A Connecting and disconnecting under no loads conditions | | | - | |
| Rated operating power | | | | |
| AC-23A Switching of motor loads or other highly inductive loads 3 phase - 3 pole | 230V | Kw (A) | 4 (14) | |
| | 400V | Kw (A) | 7,5 (14) | |
| | 500V | Kw (A) | - | |
| | 690V | Kw (A) | - | |
| AC-23A Switching of motor loads or other highly inductive loads 1 phase - 2 pole | 110V | Kw (A) | 1,1 (12) | |
| | 230V | Kw (A) | 2,2 (14) | |
| AC-3 Squirrel cage motors: starting, switching off motors during running 3 phase - 3 pole | 230V | Kw (A) | 3,7 (12) | |
| | 400V | Kw (A) | 5,5 (10) | |
| | 500V | Kw (A) | - | |
| | 690V | Kw (A) | - | |
| AC-3 Squirrel cage motors: starting, switching off motors during running 1 phase - 2 pole | 110V | Kw (A) | 0,75 (9) | |
| | 230V | Kw (A) | 1,5 (8) | |
| | 400V | Kw (A) | - | |
| AC-4 Squirrel cage motors: starting, plugging, inching | 230V | Kw (A) | - | |
| | 400V | Kw (A) | - | |
| AC-15 Control of a.c electromagnetic loads | 230V | A | 6 | |
| | 400V | A | 4 | |
| | 230V | A | 112 | |
| Rated breaking capability in AC-23A (cos φ=0,45) | 400V | A | 112 | |
| | | | | |
| Short circuit protection | | | | |
| Rated short time withstand current | Icw | A | 240 | |
| Rated short-circuit make capacity | Icm | A | - | |
| Rated conditional short-circuit current | | kA | 4 | |
| With fuses class gG | 500V | A | 20 | |
| Technical data UL/CSA | | | | |
| Rated operating voltage | Ue | UL/CSA V | 600/ - | |
| General use current | le | UL/CSA A | 16 | |
| Short circuit rating @600Vac | | Arms | 5000 | |
| Fuse size (Class RKS, 600Vac, 200KA A.I.C.) | | A | 25 (30) | |
| Rated operating power | | | | |
| 1 phase - 2 pole | 120V | Hp (A) | 1 (16) | |
| | 240V | Hp (A) | 2 (12) | |
| 3 phase - 3 pole | 200V | Hp (A) | 2 (7,8) | |
| | 240V | Hp (A) | 3 (9,6) | |
| | 480V | Hp (A) | 7,5 (11) | |
| | 600V | Hp (A) | 7,5 (9) | |
| Mechanical characteristics | | | | |
| Panel thickness | Max | mm | 4 | |
| Mechanical life | | Cycles x 10 ⁶ | 2 | |
| | | Cycles/hr | 120 | |
| Connection according to IEC 9471-1 and EN 50947-1 | | | | |
| Connecting capability | With flexible wires | Min-Max | mm ² | 2x1,5-4 |
| | | Min-Max | AWG | 16-10 |
| Connecting capability | With solid wires | Min-Max | mm ² | 2x1,5-6 |
| | | | Type | M3,5 |
| Connection terminal screw dimensions | | Nm | 1 | |
| Protection degree IEC 529 EN 60529 | | | | |
| Terminals | | IP | 20 | |
| Ambient conditions | | | | |
| Operating ambient temperature | | °C | -25 ÷ +55 | |
| Storage ambient temperature | | °C | -30 ÷ +70 | |
| Withstand to constant humid according to IEC 60068 | | | 2-78 | |
| Withstand to cyclic humid according to IEC 60068 | | | 2-30 | |