



**Cod. CR012M015RT4**

**Standard and Approvals**

- Switch according to IEC/EN 60947-3
- Certified UL60947-4-1A and CAN/CSA C22.2 No. 60947-4-1-07
- Suitable as Manual Motor Controller



**Technical characteristics: Body**



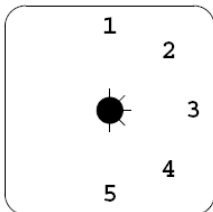
- IP20 Protection degree
- Rated operational current Ie: 12A
- Rated thermal current Ith: 16A
- Rated insulation voltage Ui: 690V
- Rear Mounting
- Fixing with 2 screws at 28mm vertical
- Switching angle: 45°
- Class V2 self-extinguishing thermoplastic housing
- Assembled with metal shaft and threaded stud bolts to ensure maximum operating reliability
- Positive opening double break contacts, made of silver and alloy.



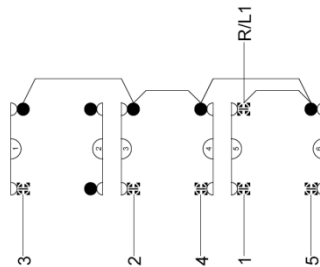
**Technical characteristics: Plate and knob**

- Grey plate 48x48mm and black knob
- IP66 Protection degree
- Fixing with 2 screw at 28mm vertical

**Positions**



**Electrical scheme**



**Electrical function**

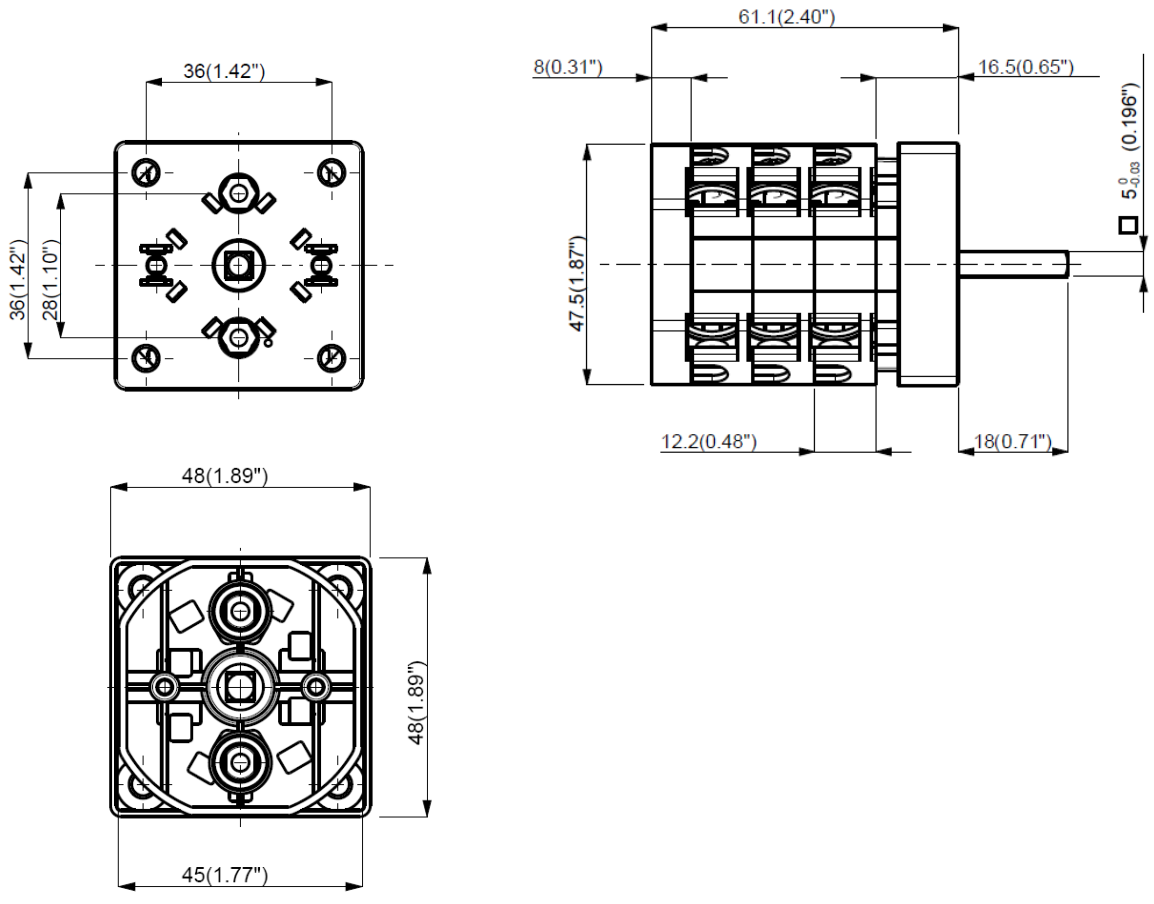
													POSITIONS														
													5														
													4														
													3														
													2														
													1														
1	3	5	7	9	11	13	15	17	19	21	23	25	27	29	31	33	35	37	39	41	43	45	47	49	51	Contacts	
2	4	6	8	10	12	14	16	18	20	22	24	26	28	30	32	34	36	38	40	42	44	46	48	50	52	Layers	
1				X																							
			X																								
					X																						
							X																				

© 2014 Copyright Bremas Erscè. Subject to change without notice and errors excepted. Data reported in this paper are carefully checked and represent typical values of series production. The descriptions of the device and its applications, contexts of use, details of external controls, information on installation and operation are provided to the best of our knowledge. In any case, this does not mean that the features described may derive legal responsibilities that extend beyond the "Terms and Conditions" of Bremas Erscè. The customer / user is not absolved from the obligation to examine our information and recommendations and the relevant technical regulations before using the products for their own purposes.

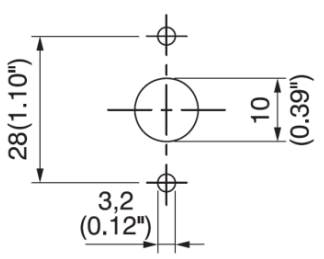
**Cod. CR012M015RT4**

measures in mm (in)

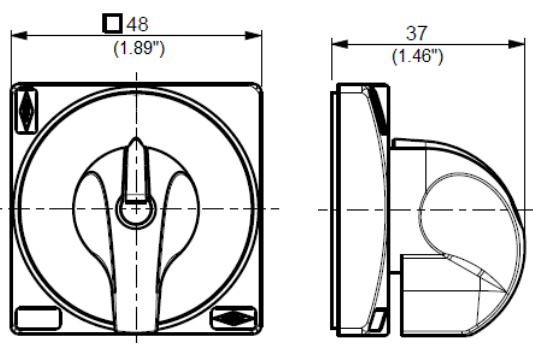
**Dimensions**



**Drilling templates**



**Plate and Knob**



### Cod. CR012M015RT4

<b>Technical data IEC 947-3 EN 60947-3</b>				
Rated insulation voltage	Ui	V	690	
Rated operating voltage	Ue	V	690	
Rated impulse withstand voltage	Uimp	kV	6	
Rated thermal current for open switch	Ith	A	16	
Rated thermal current for enclosed switch	Ithe	A	16	
Rated operation frequency		Hz	50/60	
Power dissipation for each pole		W	0,27	
<b>Rated operating current</b>				
AC-21A Switching resistive loads, including moderate overloads	Ie	A	12	
AC-22A Switching of mixed resistive and inductive loads, including moderate overloads	Ie	A	12	
AC-20A Connecting and disconnecting under no loads conditions			-	
<b>Rated operating power</b>				
AC-23A Switching of motor loads or other highly inductive loads 3 phase - 3 pole	230V	Kw (A)	3 (9)	
	400V	Kw (A)	4 (9)	
	500V	Kw (A)	-	
	690V	Kw (A)	-	
AC-23A Switching of motor loads or other highly inductive loads 1 phase - 2 pole	110V	Kw (A)	0,75 (8,5)	
	230V	Kw (A)	1,5 (8,5)	
AC-3 Squirrel cage motors: starting, swtiching off motors during running 3 phase - 3 pole	230V	Kw (A)	2,2 (7)	
	400V	Kw (A)	3,5 (7)	
	500V	Kw (A)	-	
	690V	Kw (A)	-	
AC-3 Squirrel cage motors: starting, swtiching off motors during running 1 phase - 2 pole	110V	Kw (A)	0,37 (4)	
	230V	Kw (A)	1,1 (6)	
	400V	Kw (A)	-	
AC-4 Squirrel cage motors: starting, pluggign, inching	230V	Kw (A)	-	
	400V	Kw (A)	-	
AC-15 Control of a.c electromagnetic loads	230V	A	4	
	400V	A	3	
Rated breaking capability in AC-23A (cos φ=0,45)	230V	A	72	
	400V	A	72	
<b>Short circuit protection</b>				
Rated short time withstand current	Icw	A	150	
Rated short-circuit make capacity	Icm	A	-	
Rated conditional short-circuit current	-	kA	4	
With fuses class gG	500V	A	16	
<b>Technical data UL/CSA</b>				
Rated operating voltage	Ue	UL/CSA V	600/ -	
General use current	Ie	UL/CSA A	12	
Short circuit rating @600Vac		Arms	5000	
Fuse size (Class RK5, 600Vac, 200kA A.I.C.)		A	60	
<b>Rated operating power</b>				
1 phase - 2 pole	120V	Hp (A)	0,5 (9,8)	
	240V	Hp (A)	1,5 (10)	
3 phase - 3 pole	200V	Hp (A)	1,5 (6,9)	
	240V	Hp (A)	2 (6,8)	
	480V	Hp (A)	3 (4,8)	
	600V	Hp (A)	5 (6,1)	
<b>Mechanical characteristics</b>				
Panel tickness	Max	mm	4	
Mechanical life		Cycles x 10 <sup>6</sup>	2	
		Cycles/hr	120	
<b>Connection according to IEC 9471-1 and EN 50947-1</b>				
Connecting capability	With flexible wires	Min-Max	mm <sup>2</sup>	2x1,5-4
		Min-Max	AWG	16-10
	With solid wires	Min-Max	mm <sup>2</sup>	2x1,5-6
Connection terminal screw dimensions		Type	M3,5	
Screw tightening torque		Nm	1	
<b>Protection degree IEC 529 EN 60529</b>				
Terminals		IP	20	
<b>Ambient conditions</b>				
Operating ambient temperature		°C	-25 ÷ +55	
Storage ambient temprature		°C	-30 ÷ +70	
Withstand to constant humid according to IEC 60068			2-78	
Withstand to cyclic humid according to IEC 60068			2-30	