

**Cod. CR01200G3RL6**



(Image is purely indicative)



### Standard and Approvals

- Switch according to IEC/EN 60947-3
- Certified UL60947-4-1A and CAN/CSA C22.2 No. 60947-4-1-07
- Suitable as Manual Motor Controller



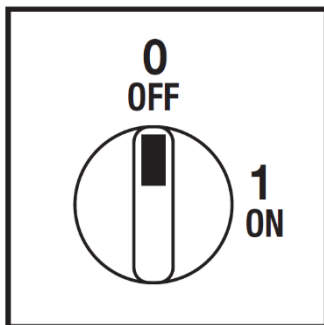
### Technical characteristics: Body

- ON-OFF switch 3 pole with padlockable handle
- IP20 Protection degree
- Rated operational current Ie: 12A
- Rated thermal current Ith: 16A
- Rated insulation voltage Ui: 690V
- Base mounting
- Fixing with 2 screw at 28mm vertical
- Switching angle: 90°
- Class V2 self-extinguishing thermoplastic housing
- Assembled with metal shaft and threaded stud bolts to ensure maximum operating reliability
- Positive opening double break contacts, silver alloy made.

### Technical characteristics: Knob

- Yellow plate 67x67mm and red padlockable knob (max. 3 padlocks)
- IP66 Protection degree
- Fixing with 2 screw at 28mm vertical

### Positions



### Electrical diagram



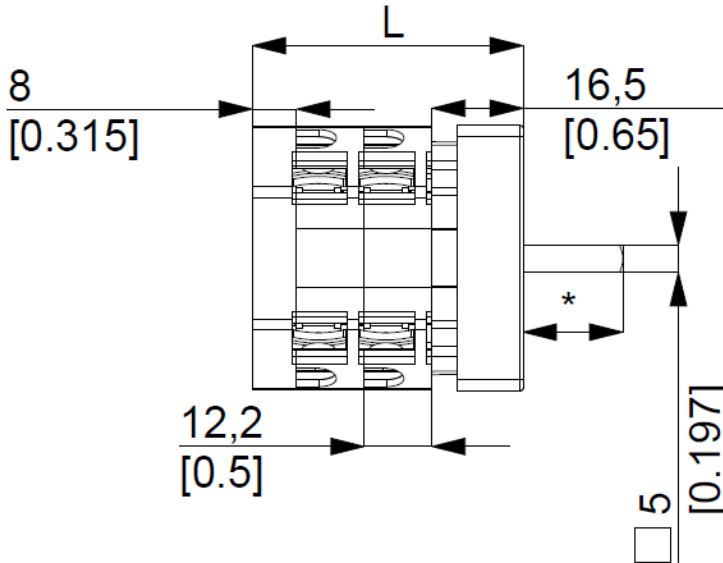
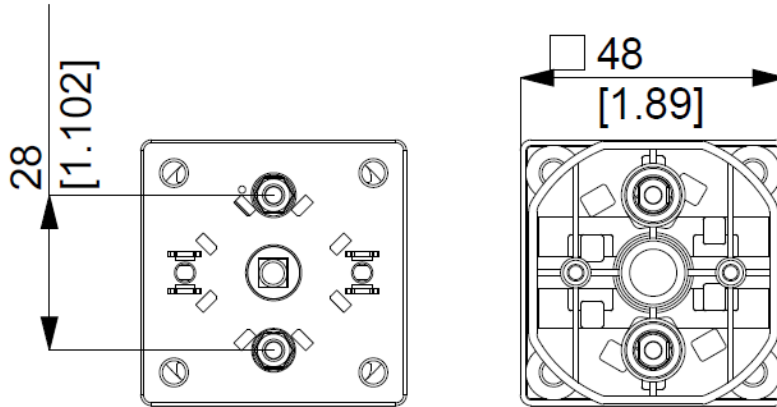
### Electrical function

	<b>0</b>							CR
	<b>1</b>	<b>X</b>	<b>X</b>	<b>X</b>				CA 90°
Contact		1	2	3	4	5	6	7
Element		<b>1</b>			<b>2</b>			CQ
								Angle

**Cod. CR01200G3RL6**

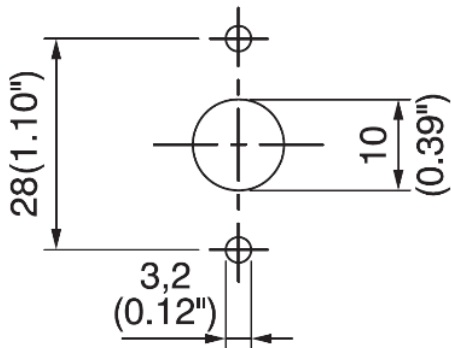
measures in mm (in)

**Dimensions**

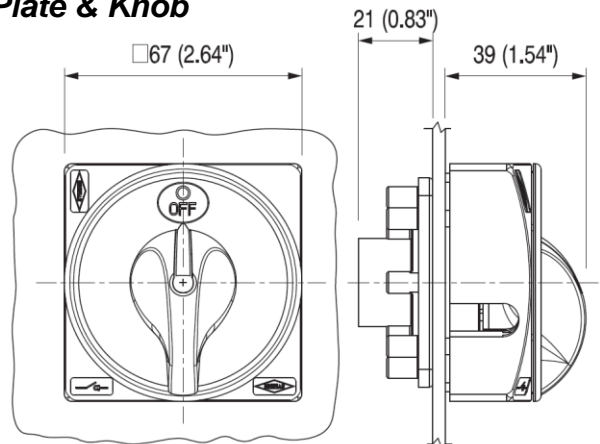


\* Sporgenza / Ledge 18,00mm  
L Lunghezza / Length 48,90mm

**Drilling templates**



**Plate & Knob**



### Cod. CR01200G3RL6

<b>Technical data IEC 947-3 EN 60947-3</b>				
Rated insulation voltage	Ui	V	690	
Rated operating voltage	Ue	V	690	
Rated impulse withstand voltage	Uimp	kV	6	
Rated thermal current for open switch	Ith	A	16	
Rated thermal current for enclosed switch	Ithe	A	16	
Rated operation frequency		Hz	50/60	
Power dissipation for each pole		W	0,27	
<b>Rated operating current</b>				
AC-21A Switching resistive loads, including moderate overloads	Ie	A	12	
AC-22A Switching of mixed resistive and inductive loads, including moderate overloads	Ie	A	12	
AC-20A Connecting and disconnecting under no loads conditions			-	
<b>Rated operating power</b>				
AC-23A Switching of motor loads or other highly inductive loads 3 phase - 3 pole	230V	Kw (A)	3 (9)	
	400V	Kw (A)	4 (9)	
	500V	Kw (A)	-	
	690V	Kw (A)	-	
AC-23A Switching of motor loads or other highly inductive loads 1 phase - 2 pole	110V	Kw (A)	0,75 (8,5)	
	230V	Kw (A)	1,5 (8,5)	
AC-3 Squirrel cage motors: starting, swtiching off motors during running 3 phase - 3 pole	230V	Kw (A)	2,2 (7)	
	400V	Kw (A)	3,5 (7)	
	500V	Kw (A)	-	
	690V	Kw (A)	-	
AC-3 Squirrel cage motors: starting, swtiching off motors during running 1 phase - 2 pole	110V	Kw (A)	0,37 (4)	
	230V	Kw (A)	1,1 (6)	
	400V	Kw (A)	-	
AC-4 Squirrel cage motors: starting, pluggin, inching	230V	Kw (A)	-	
	400V	Kw (A)	-	
AC-15 Control of a.c electromagnetic loads	230V	A	4	
	400V	A	3	
Rated breaking capability in AC-23A (cos φ=0,45)	230V	A	72	
	400V	A	72	
<b>Short circuit protection</b>				
Rated short time withstand current	Icw	A	150	
Rated short-circuit make capacity	Icm	A	-	
Rated conditional short-circuit current	-	kA	4	
With fuses class gG	500V	A	16	
<b>Technical data UL/CSA</b>				
Rated operating voltage	Ue	UL/CSA V	600/ -	
General use current	Ie	UL/CSA A	12	
Short circuit rating @600Vac		Arms	5000	
Fuse size (Class RK5, 600Vac, 200kA A.I.C.)		A	60	
<b>Rated operating power</b>				
1 phase - 2 pole	120V	Hp (A)	0,5 (9,8)	
	240V	Hp (A)	1,5 (10)	
3 phase - 3 pole	200V	Hp (A)	1,5 (6,9)	
	240V	Hp (A)	2 (6,8)	
	480V	Hp (A)	3 (4,8)	
	600V	Hp (A)	5 (6,1)	
<b>Mechanical characteristics</b>				
Panel tickness	Max	mm	4	
Mechanical life		Cycles x 10 <sup>6</sup>	2	
		Cycles/hr	120	
<b>Connection according to IEC 9471-1 and EN 50947-1</b>				
Connecting capability	With flexible wires	Min-Max	mm <sup>2</sup>	2x1,5-4
		Min-Max	AWG	16-10
	With solid wires	Min-Max	mm <sup>2</sup>	2x1,5-6
Connection terminal screw dimensions		Type	M3,5	
Screw tightening torque		Nm	1	
<b>Protection degree IEC 529 EN 60529</b>				
Terminals		IP	20	
<b>Ambient conditions</b>				
Operating ambient temperature		°C	-25 + +55	
Storage ambient temperature		°C	-30 + +70	
Withstand to constant humid according to IEC 60068			2-78	
Withstand to cyclic humid according to IEC 60068			2-30	