

**Cod. CR0120002RT4**



### ***Technical characteristics: Body***

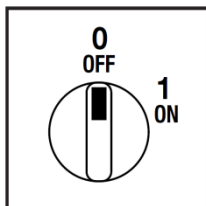
- ON-OFF switch 2 pole
- IP20 Protection degree
- Rated operational current Ie: 12A
- Rated thermal current Ith: 16A
- Rated insulation voltage Ui: 690V
- Rear Mounting
- Fixing:
  - 2 screw at 28mm vertical
  - 2 screw at 32mm horizontal
- Switching angle: 60°
- Class V2 self-extinguishing thermoplastic housing
- Assembled with metal shaft and threaded stud bolts to ensure maximum operating reliability
- Positive opening double break contacts, silver alloy made.



### ***Technical characteristics: Plate and knob***

- Grey plate 48x48mm and black knob
- IP66 Protection degree
- Fixing:
  - 2 screw at 28mm vertical
  - 2 screw at 32mm horizontal

### ***Plate and positions***



### ***Electrical function***

	<b>0</b>			
	<b>1</b>	<b>X</b>	<b>X</b>	
Contact		1	2	3
Element		<b>1</b>		4

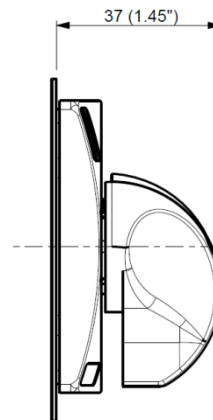
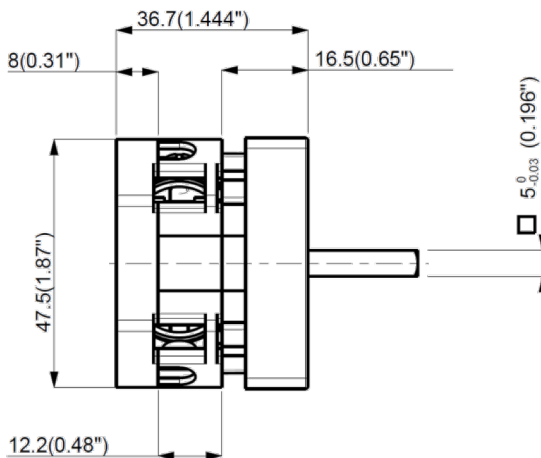
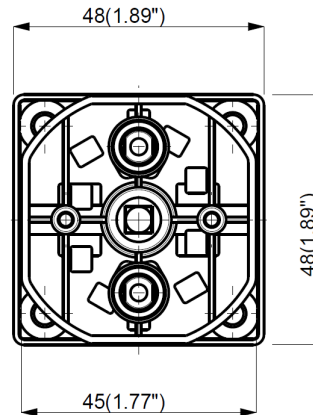
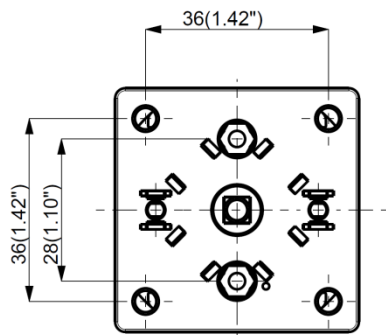
### ***Electrical scheme***



**Cod. CR0120002RT4**

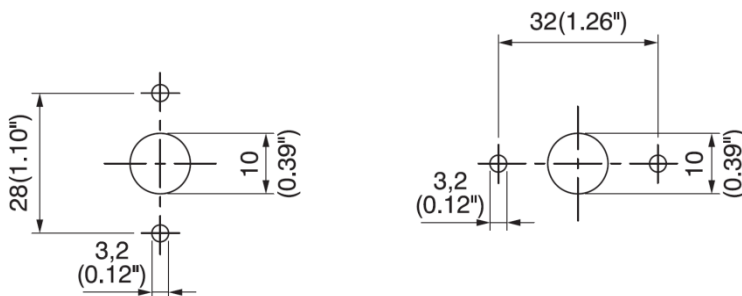
## Dimensions

measures in mm (in)



## Drilling templates

measures in mm (in)



### Cod. CR0120002RT4

			CR012
<b>Technical data IEC 947-3 EN 60947-3</b>			
Rated insulation voltage	Ui	V	690
Rated operating voltage	Ue	V	690
Rated impulse withstand voltage	Uimp	kV	6
Rated thermal current for open switch	Ith	A	16
Rated operation frequency		Hz	50
Power dissipation for each pole		W	0,27
<b>Rated operating current</b>			
AC-21A Switching resistive loads, including moderate overloads	Ie	A	12
AC-22A Switching of mixed resistive and inductive loads, including moderate overloads	Ie	A	12
AC-20A Connecting and disconnecting under no loads conditions			-
<b>Rated operating power</b>			
AC-23A Switching of motor loads or other highly inductive loads 3 phase - 3 pole	230V	Kw (A)	3 (9)
	400V	Kw (A)	4 (9)
	500V	Kw (A)	-
	690V	Kw (A)	-
AC-23A Switching of motor loads or other highly inductive loads 1 phase - 2 pole	110V	Kw (A)	0,75 (8,5)
	230V	Kw (A)	1,5 (8,5)
AC-3 Squirrel cage motors: starting, swtiching off motors during running 3 phase - 3 pole	230V	Kw (A)	2,2 (7)
	400V	Kw (A)	3,5 (7)
	500V	Kw (A)	-
	690V	Kw (A)	-
AC-3 Squirrel cage motors: starting, swtiching off motors during running 1 phase - 2 pole	110V	Kw (A)	0,37 (4)
	230V	Kw (A)	1,1 (6)
	400V	Kw (A)	-
AC-4 Squirrel cage motors: starting, pluggign, inching	230V	Kw (A)	-
	400V	Kw (A)	-
AC-15 Control of a.c electromagnetic loads	230V	A	4
	400V	A	3
Rated breaking capability in AC-23A (cos φ=0,45)	230V	A	72
	400V	A	72
<b>Short circuit protection</b>			
Rated short time withstand current	Icw	A	150
Rated short-circuit make capacity	Icm	A	-
Rated conditional short-circuit current	-	kA	4
With fuses class gG	500V	A	16
<b>Technical data UL/CSA</b>			
Rated insulation voltage	Ui	UL/CSA V	600/ -
Rated operating voltage	Ue	UL/CSA V	600/ -
General use current	Ie	UL/CSA A	12
Short circuit rating @600Vac		Arms	5000
Fuse size (Class RK5, 600Vac, 200kA A.I.C.)		A	60
<b>Rated operating power</b>			
1 phase - 2 pole	120V	Hp (A)	0,5 (9,8)
	240V	Hp (A)	1,5 (10)
3 phase - 3 pole	200V	Hp (A)	1,5 (6,9)
	240V	Hp (A)	2 (6,8)
	480V	Hp (A)	3 (4,8)
	600V	Hp (A)	5 (6,1)
<b>Mechanical characteristics</b>			
Mechanical life		Cicli x 106	2
		Cicli/ora	120
<b>Connection according to IEC 9471-1 and EN 50947-1</b>			
Connecting capability	Min-Max	mm2	2x1,5-4
	With flexible wires	Min-Max	AWG 16-10
	With solid wires	Min-Max	mm2 2x1,5-6
Connection terminal screw dimensions		Tipo	M3,5
Screw tightening torque		Nm	1
<b>Protection degree IEC 529 EN 60529</b>			
Terminals		IP	20
<b>Ambient conditions</b>			
Operating ambient temperature		°C	-25 ÷ +55
Storage ambient temprature		°C	-30 ÷ +70
Withstand to constant humid according to IEC 60068			2-78
Withstand to cyclic humid according to IEC 60068			2-30

### Standard

IEC/EN 60947-3; UL508

### Approvals

