

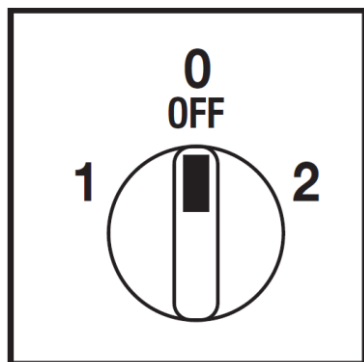
Cod. CQ0160009RV4



(Image is purely indicative)



Positions



Standard and Approvals

- Switch according to IEC/EN 60947-3
- Certified UL60947-4-1A and CAN/CSA C22.2 No. 60947-4-1-07
- Suitable as Manual Motor Controller



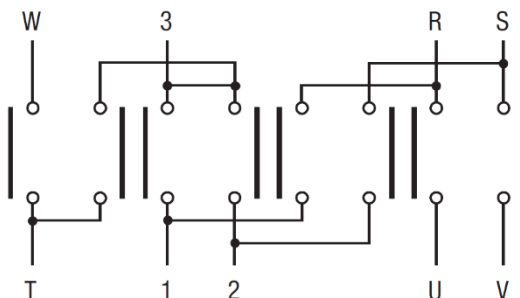
Technical characteristics: Body

- Changing switch Dahlander pole
- IP20 Protection degree
- Rated operational current Ie: 20A (AC-21A)
- Rated thermal current Ith: 20A
- Rated insulation voltage Ui: 690V
- Rear mounting
- Fixing with 4 screw at 36x36mm
- Switching angle: 60°
- Class V2 self-extinguishing thermoplastic housing
- Positive opening double break contacts, silver alloy made.

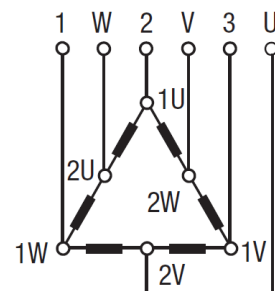
Technical characteristics: Knob

- Grey plate 48x48mm and black knob
- IP66 Protection degree
- Fixing with 4 screw at 36x36mm

Electrical diagram and function



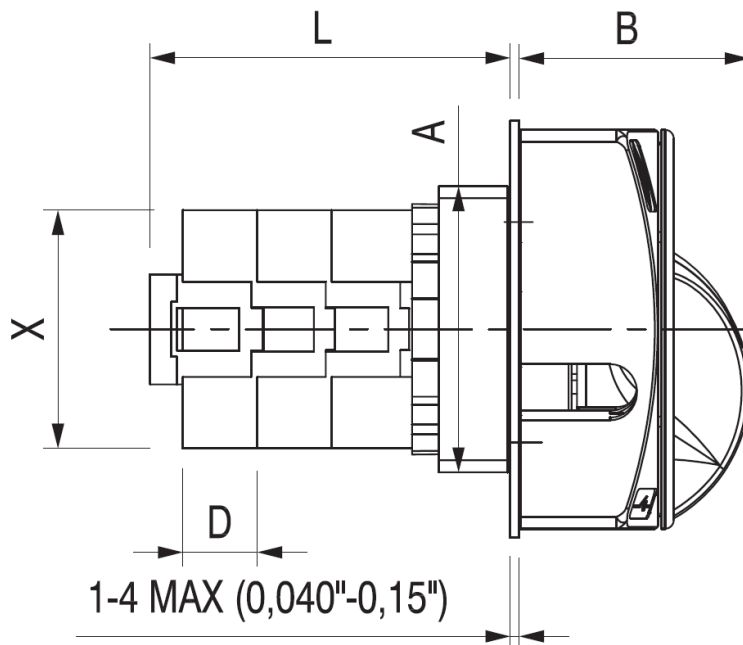
	2	X	X	X		X	X	CR									
	0							CA 60°									
	1	X			X	X		CQ									
Contact	1	2	3	4	5	6	7	8	9	10	11	12	13	14	15	16	Angle
Element	1		2		3		4										



Cod. CQ0160009RV4

measures in mm (in)

Dimensions



Switch dimensions

Series	X	A	D	L	N° Stages					
					1	2	3	4	5	6
CQ 012-016	40x40	□ 48	12,5	L (mm)	48	60,5	73	85,5	98	110,5
	1,57"x1,57"	□ 1,89"	0,49"	L (in)	1,89	2,38	2,87	3,36	3,85	4,35
CQ 025-032	63x62	□ 60	12,5	L (mm)	49,5	62	74,5	87	99,5	112
	2,48"x 2,44"	□ 2,36"	0,49"	L (in)	1,94	2,44	2,93	3,42	3,92	4,40

Handle	B	
	mm	in
RT4-RY4	37	1,45
RT6-RY6	39	1,53
RL6-RK6	39	1,53
RV4-RW4	31	1,22
RV6-RW6	36	1,42
RR0	34	1,34

Drilling templates

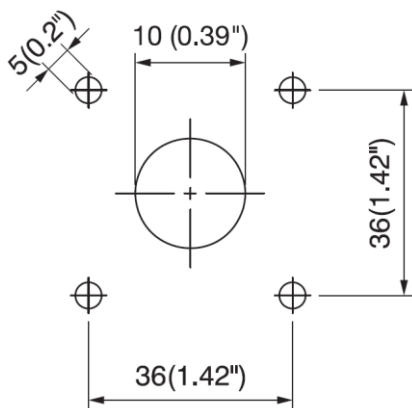
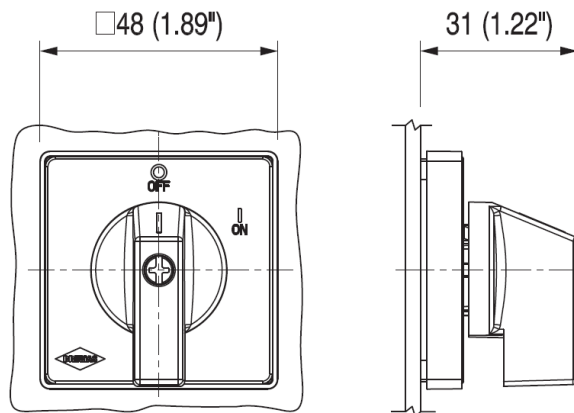


Plate & Knob



Cod. CQ0160009RV4

			CQ016	
Technical data IEC 947-3 EN 60947-3				
Rated insulation voltage	Ui	V	690	
Rated operating voltage	Ue	V	690	
Rated impulse withstand voltage	Uimp	kV	6	
Rated thermal current for open switch	Ith	A	20	
Rated thermal current for enclosed switch	Ithe	A	20	
Rated operation frequency		Hz	50/60	
Power dissipation for each pole		W	0,6	
Rated operating current				
AC-21A Switching resistive loads, including moderate overloads	Ie	A	20	
AC-22A Switching of mixed resistive and inductive loads, including moderate overloads	Ie	A	16	
AC-20A Connecting and disconnecting under no loads conditions			-	
Rated operating power				
AC-23A Switching of motor loads or other highly inductive loads 3 phase - 3 pole	230V	Kw (A)	5,5 (17)	
	400V	Kw (A)	9 (16)	
	500V	Kw (A)	9 (13)	
	690V	Kw (A)	9 (9)	
AC-3 Squirrel cage motors: starting, swtching off motors during running 3 phase - 3 pole	230V	Kw (A)	4 (13)	
	400V	Kw (A)	7,5 (14)	
	500V	Kw (A)	7,5 (11)	
	690V	Kw (A)	7,5 (8)	
AC-4 Squirrel cage motors: starting, pluggign, inching	230V	Kw (A)	1,5 (4)	
	400V	Kw (A)	2,2 (4)	
AC-15 Control of a.c electromagnetic loads	230V	A	6	
	400V	A	4	
Rated breaking capability in AC-23A (cos φ=0,45)	230V	A	128	
	400V	A	128	
Short circuit protection				
Rated short time withstand current	Icw	A	240	
Rated short-circuit make capacity	Icm	A	1000	
Rated conditional short-circuit current	-	kA	5	
With fuses class gG	500V	A	20	
Technical data UL/CSA				
Rated operating voltage	Ue	UL/CSA V	600	
General use current	Ie	UL/CSA A	20	
Short circuit rating @600Vac		Arms	5000	
Rated operating power				
1 phase - 2 pole	120V	UL/CSA Hp	1,5/0,5	
	240V	UL/CSA Hp	3/1,5	
3 phase - 3 pole	200V	UL/CSA Hp	5/3	
	240V	UL/CSA Hp	7,5/5	
	480V	UL/CSA Hp	7,5/7,5	
	600V	UL/CSA Hp	10/10	
Mechanical characteristics				
Mechanical life		Cycles x 10 ⁶	2	
		Cycles/hour	120	
Connection according to IEC 9471-1 and EN 50947-1				
Connecting capability	With flexible wires	Min-Max	mm ²	2x1,5-2,5
		Min-Max	AWG	16-12
	With solid wires	Min-Max	mm ²	2x1,5-4
Connection terminal screw dimensions		Type	M3,5	
Screw tightening torque		Nm	1	
Protection degree IEC 529 EN 60529				
Terminals		IP	20	
Ambient conditions				
Operating ambient temperature		°C	-25 ÷ +55	
Storage ambient temprature		°C	-30 ÷ +70	
Withstand to constant humid according to IEC 60068			2-78	
Withstand to cyclic humid according to IEC 60068			2-30	