

## Standard and Approvals



### **Technical characteristics: Body**

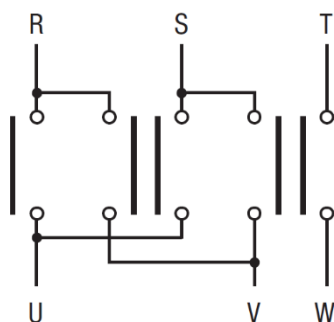
- Reversing switch 3 pole
- IP20 Protection degree
- Rated operational current  $I_e$ : 20A (AC-21A)
- Rated thermal current  $I_{th}$ : 20A
- Rated insulation voltage  $U_i$ : 690V
- Rear mounting
- Fixing with 4 screw at 36x36mm
- Switching angle: 60°
- Class V2 self-extinguishing thermoplastic housing
- Positive opening double break contacts, silver alloy made.



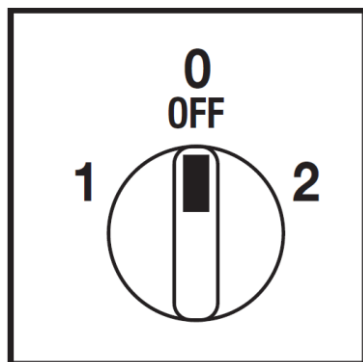
### Technical characteristics: Knob

- Grey plate 48x48mm and black knob
- IP66 Protection degree
- Fixing with 4 screw at 36x36mm

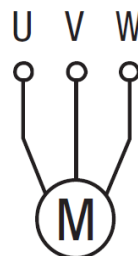
### ***Electrical diagram and function***



## Positions



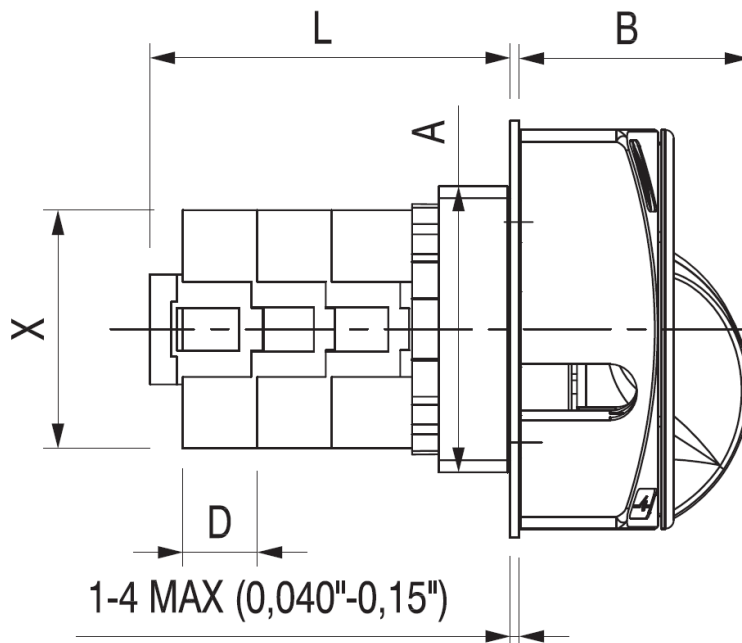
	<b>2</b>		<b>×</b>	<b>×</b>		<b>×</b>		CR CA 60° CQ						
	<b>0</b>													
	<b>1</b>	<b>×</b>			<b>×</b>	<b>×</b>								
Contact		1	2	3	4	5	6	7	8	9	10	11	12	
Element		<b>1</b>				<b>2</b>				<b>3</b>				Angle



**Cod. CQ0160008RV4**

measures in mm (in)

## Dimensions

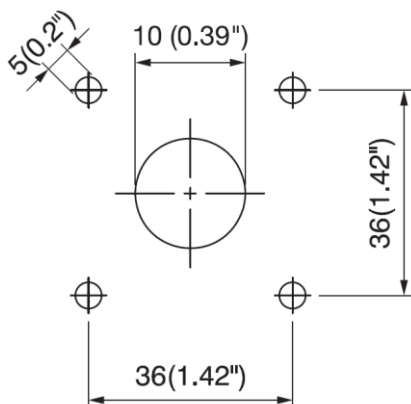


### Switch dimensions

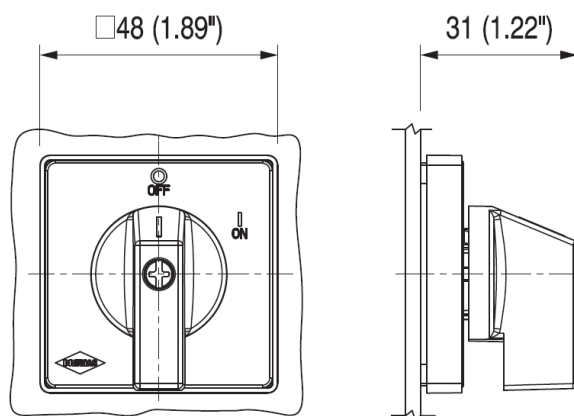
Series	X	A	D		N° Stages					
					1	2	3	4	5	6
<b>CQ 012-016</b>	40x40 1,57"x1,57"	□ 48 □ 1,89"	12,5 0,49"	<b>L (mm)</b>	48	60,5	73	85,5	98	110,5
				<b>L(in)</b>	1,89	2,38	2,87	3,36	3,85	4,35
<b>CQ 025-032</b>	63x62 2,48"x 2,44"	□ 60 □ 2,36"	12,5 0,49"	<b>L (mm)</b>	49,5	62	74,5	87	99,5	112
				<b>L(in)</b>	1,94	2,44	2,93	3,42	3,92	4,40

Handle	B	
	mm	in
<b>RT4-RY4</b>	37	1,45
<b>RT6-RY6</b>	39	1,53
<b>RL6-RK6</b>	39	1,53
<b>RV4-RW4</b>	31	1,22
<b>RV6-RW6</b>	36	1,42
<b>RR0</b>	34	1,34

### Drilling templates



### Plate & Knob



### Cod. CQ0160008RV4

			CQ016
<b>Technical data IEC 947-3 EN 60947-3</b>			
Rated insulation voltage	Ui	V	690
Rated operating voltage	Ue	V	690
Rated impulse withstand voltage	Uimp	kV	6
Rated thermal current for open switch	Ith	A	20
Rated thermal current for enclosed switch	Ithe	A	20
Rated operation frequency		Hz	50/60
Power dissipation for each pole		W	0,6
<b>Rated operating current</b>			
AC-21A Switching resistive loads, including moderate overloads	Ie	A	20
AC-22A Switching of mixed resistive and inductive loads, including moderate overloads	Ie	A	16
AC-20A Connecting and disconnecting under no loads conditions			-
<b>Rated operating power</b>			
AC-23A Switching of motor loads or other highly inductive loads 3 phase - 3 pole	230V	Kw (A)	5,5 (17)
	400V	Kw (A)	9 (16)
	500V	Kw (A)	9 (13)
	690V	Kw (A)	9 (9)
AC-3 Squirrel cage motors: starting, swtiching off motors during running 3 phase - 3 pole	230V	Kw (A)	4 (13)
	400V	Kw (A)	7,5 (14)
	500V	Kw (A)	7,5 (11)
	690V	Kw (A)	7,5 (8)
AC-4 Squirrel cage motors: starting, pluggign, inching	230V	Kw (A)	1,5 (4)
	400V	Kw (A)	2,2 (4)
AC-15 Control of a.c electromagnetic loads	230V	A	6
	400V	A	4
Rated breaking capability in AC-23A (cos φ=0,45)	230V	A	128
	400V	A	128
<b>Short circuit protection</b>			
Rated short time withstand current	Icw	A	240
Rated short-circuit make capacity	Icm	A	1000
Rated conditional short-circuit current	-	kA	5
With fuses class gG	500V	A	20
<b>Technical data UL/CSA</b>			
Rated operating voltage	Ue	UL/CSA V	600
General use current	Ie	UL/CSA A	20
Short circuit rating @600Vac		Arms	5000
<b>Rated operating power</b>			
1 phase - 2 pole	120V	UL/CSA Hp	1,5/0,5
	240V	UL/CSA Hp	3/1,5
3 phase - 3 pole	200V	UL/CSA Hp	5/3
	240V	UL/CSA Hp	7,5/5
	480V	UL/CSA Hp	7,5/7,5
	600V	UL/CSA Hp	10/10
<b>Mechanical characteristics</b>			
Mechanical life		Cycles x 10 <sup>6</sup>	2
		Cycles/hour	120
<b>Connection according to IEC 9471-1 and EN 50947-1</b>			
Connecting capability	With flexible wires	Min-Max	mm2
		Min-Max	AWG
	With solid wires	Min-Max	mm2
		Type	M3,5
Connection terminal screw dimensions		Nm	1
<b>Protection degree IEC 529 EN 60529</b>			
Terminals		IP	20
<b>Ambient conditions</b>			
Operating ambient temperature		°C	-25 ÷ +55
Storage ambient temprature		°C	-30 ÷ +70
Withstand to constant humid according to IEC 60068			2-78
Withstand to cyclic humid according to IEC 60068			2-30