

Cod. CQ0160002RV4



(Image is purely indicative)



Standard and Approvals

- Switch according to IEC/EN 60947-3
- Certified UL60947-4-1A and CAN/CSA C22.2 No. 60947-4-1-07
- Suitable as Manual Motor Controller



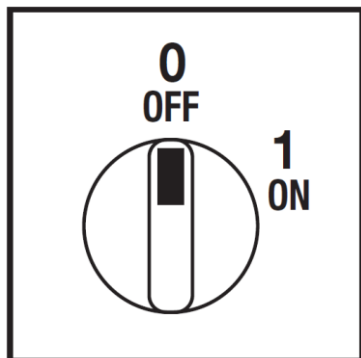
Technical characteristics: Body

- ON-OFF switch 2 pole
- IP20 Protection degree
- Rated operational current Ie: 20A (AC-21A)
- Rated thermal current Ith: 20A
- Rated insulation voltage Ui: 690V
- Rear mounting
- Fixing with 4 screw at 36x36mm
- Switching angle: 60°
- Class V2 self-extinguishing thermoplastic housing
- Positive opening double break contacts, silver alloy made.

Technical characteristics: Knob

- Grey plate 48x48mm and black knob
- IP66 Protection degree
- Fixing with 4 screw at 36x36mm

Positions



Electrical diagram



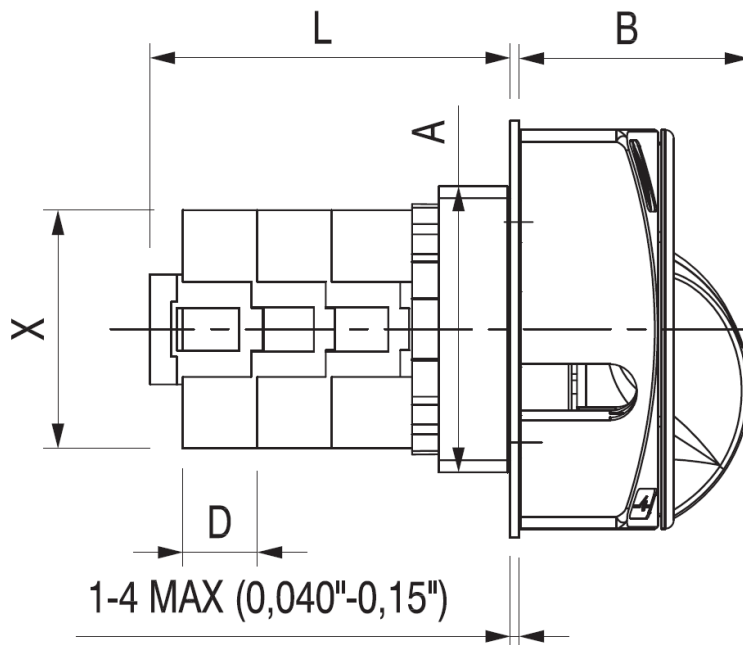
Electrical function

	0			CR	60°
	1	X	X	CA	
Contact		1	2	3	
Element		1			Angle

Cod. CQ0160002RV4

measures in mm (in)

Dimensions



Switch dimensions

Series	X	A	D	L (mm)	N° Stages					
					1	2	3	4	5	6
CQ 012-016	40x40	□ 48	12,5	L (mm)	48	60,5	73	85,5	98	110,5
	1,57"x1,57"	□ 1,89"	0,49"	L (in)	1,89	2,38	2,87	3,36	3,85	4,35
CQ 025-032	63x62	□ 60	12,5	L (mm)	49,5	62	74,5	87	99,5	112
	2,48"x 2,44"	□ 2,36"	0,49"	L (in)	1,94	2,44	2,93	3,42	3,92	4,40

Handle	B	
	mm	in
RT4-RY4	37	1,45
RT6-RY6	39	1,53
RL6-RK6	39	1,53
RV4-RW4	31	1,22
RV6-RW6	36	1,42
RR0	34	1,34

Drilling templates

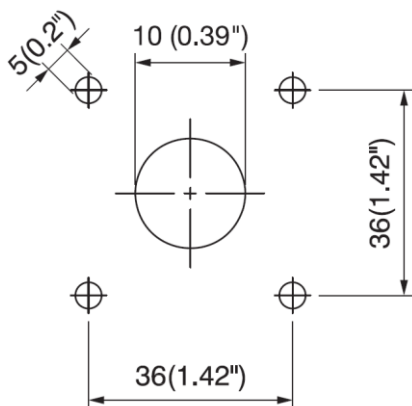
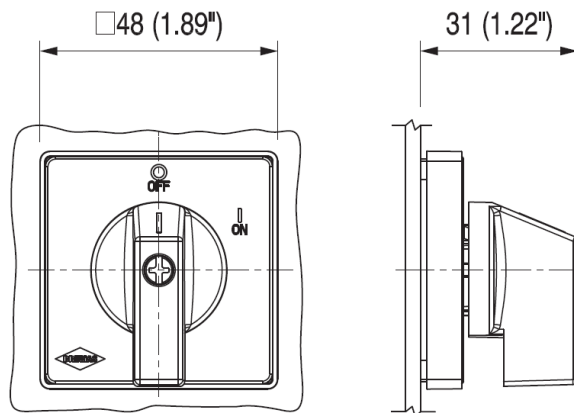


Plate & Knob



Cod. CQ0160002RV4

			CQ016
Technical data IEC 947-3 EN 60947-3			
Rated insulation voltage	Ui	V	690
Rated operating voltage	Ue	V	690
Rated impulse withstand voltage	Uimp	kV	6
Rated thermal current for open switch	Ith	A	20
Rated thermal current for enclosed switch	Ithe	A	20
Rated operation frequency		Hz	50/60
Power dissipation for each pole		W	0,6
Rated operating current			
AC-21A Switching resistive loads, including moderate overloads	Ie	A	20
AC-22A Switching of mixed resistive and inductive loads, including moderate overloads	Ie	A	16
AC-20A Connecting and disconnecting under no loads conditions			-
Rated operating power			
AC-23A Switching of motor loads or other highly inductive loads 3 phase - 3 pole	230V	Kw (A)	5,5 (17)
	400V	Kw (A)	9 (16)
	500V	Kw (A)	9 (13)
	690V	Kw (A)	9 (9)
AC-3 Squirrel cage motors: starting, swtching off motors during running 3 phase - 3 pole	230V	Kw (A)	4 (13)
	400V	Kw (A)	7,5 (14)
	500V	Kw (A)	7,5 (11)
	690V	Kw (A)	7,5 (8)
AC-4 Squirrel cage motors: starting, pluggign, inching	230V	Kw (A)	1,5 (4)
	400V	Kw (A)	2,2 (4)
AC-15 Control of a.c electromagnetic loads	230V	A	6
	400V	A	4
Rated breaking capability in AC-23A (cos φ=0,45)	230V	A	128
	400V	A	128
Short circuit protection			
Rated short time withstand current	Icw	A	240
Rated short-circuit make capacity	Icm	A	1000
Rated conditional short-circuit current	-	kA	5
With fuses class gG	500V	A	20
Technical data UL/CSA			
Rated operating voltage	Ue	UL/CSA V	600
General use current	Ie	UL/CSA A	20
Short circuit rating @600Vac		Arms	5000
Rated operating power			
1 phase - 2 pole	120V	UL/CSA Hp	1,5/0,5
	240V	UL/CSA Hp	3/1,5
3 phase - 3 pole	200V	UL/CSA Hp	5/3
	240V	UL/CSA Hp	7,5/5
	480V	UL/CSA Hp	7,5/7,5
	600V	UL/CSA Hp	10/10
Mechanical characteristics			
Mechanical life		Cycles x 10 ⁶	2
		Cycles/hour	120
Connection according to IEC 9471-1 and EN 50947-1			
Connecting capability	With flexible wires	Min-Max	mm2
		Min-Max	AWG
	With solid wires	Min-Max	mm2
		Type	M3,5
Connection terminal screw dimensions		Nm	1
Protection degree IEC 529 EN 60529			
Terminals		IP	20
Ambient conditions			
Operating ambient temperature		°C	-25 ÷ +55
Storage ambient temprature		°C	-30 ÷ +70
Withstand to constant humid according to IEC 60068			2-78
Withstand to cyclic humid according to IEC 60068			2-30