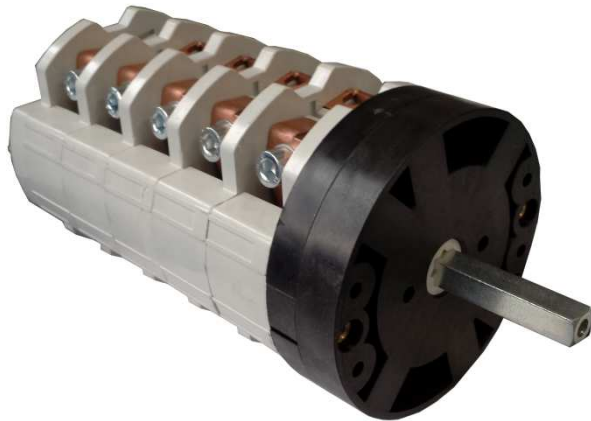


Cod. CA1000010PL4

### Standard and Approvals

- Cam switch according to IEC/EN 60947-3
- UL508 and CSA C22.2 No. 14-10 approved
- Suitable for manual motor control



(purely indicative picture)



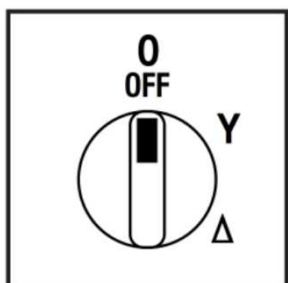
### Technical characteristics: body

- STAR-DELTA Starter
- IP00 Protection degree
- Rated operational current  $I_e$ : 115A
- Rated thermal current  $I_{th}$ : 115A
- Rated insulation voltage  $U_i$ : 690V
- Panel mounting
- Fixing with 4 screws at 30x90mm
- Contact elements: 4
- Switching angle: 60°
- Self-extinguishing thermosetting/thermoplastic class V2 housing
- Assembled with metal shaft and threaded stud bolts to ensure maximum operating reliability
- Positive opening double break contacts, made of silver and alloy

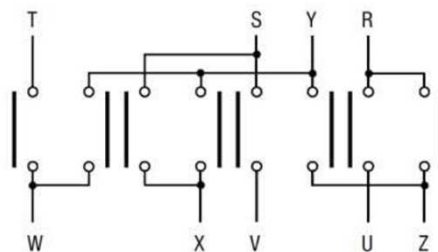
### Technical characteristics: Plate and knob

- Transparent plate 130x130mm and black knob
- IP40 Protection degree
- Fixing with 4 screws at 30x90mm

### Positions



### Electrical scheme



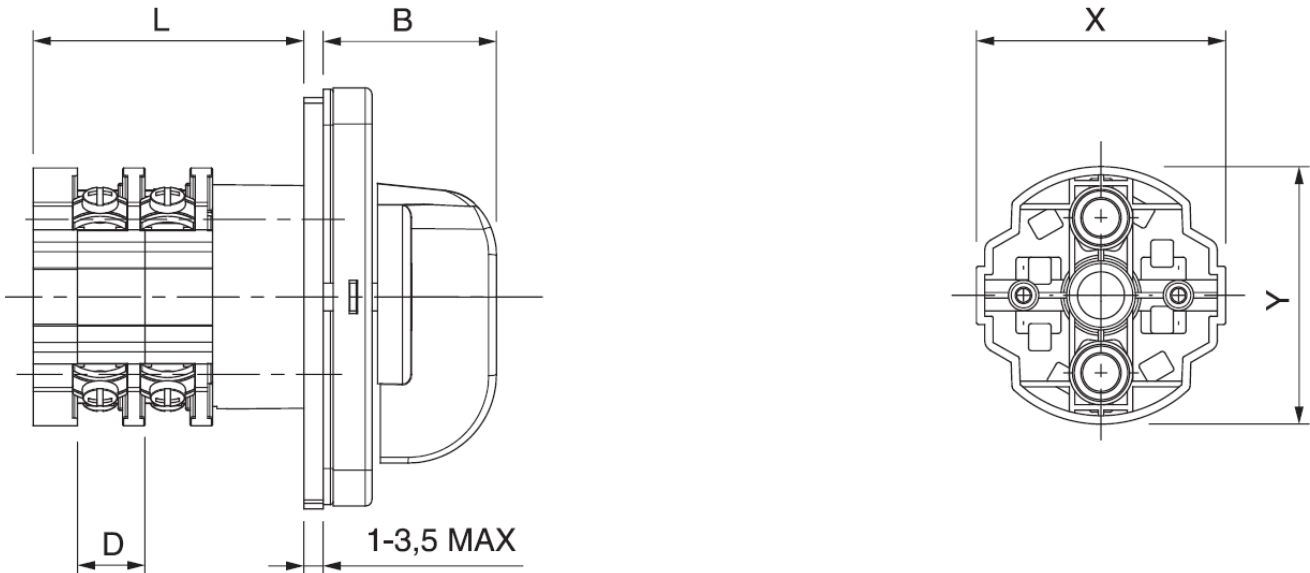
### Electrical function

	Δ	X	X	X		X		X	X							
	Y	X			X	X	X	X								
	0															
Contatto	1	2	3	4	5	6	7	8	9	10	11	12	13	14	15	16
Elemento	<b>1</b>				<b>2</b>				<b>3</b>				<b>4</b>			

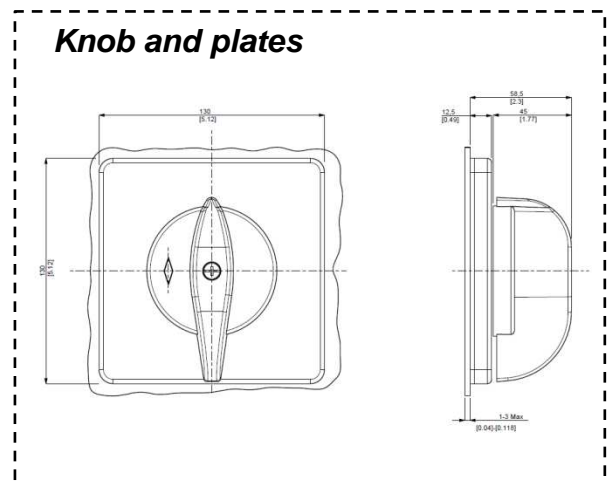
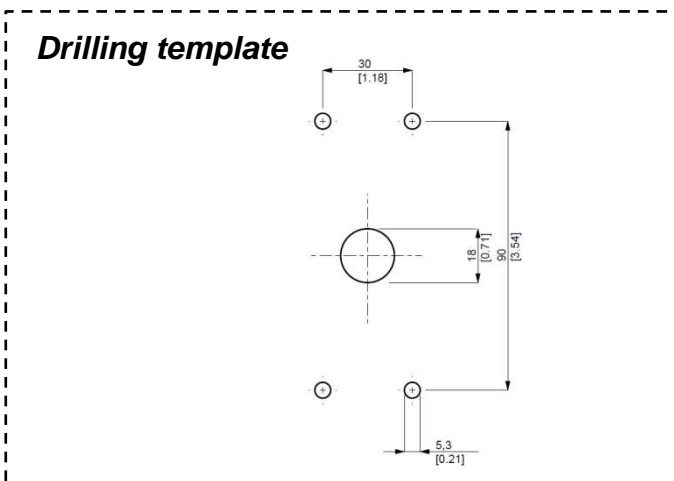
**Cod. CA1000010PL4**

**Dimensions**

measures in mm (in)



Series	X	Y	D		N° 4 elements	B
CA100	/	∅110	30	L	170,8	PL4 = 62



# Cam switches

## CA Series – Datasheet



**Bremas Erscse SpA**  
 Via castellazzo 9 – 20040 Cambiago (MI)  
 Tel +39 02 95651611 Fax +39 02 95651639  
[www.bremas.it](http://www.bremas.it) [info@bremas.it](mailto:info@bremas.it)

ISO 9001 Certified Quality System

**Cod. CA1000010PL4**

<b>Technical data IEC 947-3 EN 60947-3</b>				
Rated insulation voltage	Ui	V	690	
Rated operating voltage	Ue	V	690	
Rated impulse withstand voltage	Uimp	kV	6	
Rated thermal current for open switch	Ith	A	115	
Rated thermal current for enclosed switch	Ithe	A	100	
Rated operation frequency		Hz	50/60	
Power dissipation for each pole		W	4,7	
<b>Rated operating current</b>				
AC-21A Switching resistive loads, including moderate overloads	Ie	A	115/110 <sup>5</sup>	
AC-22A Switching of mixed resistive and inductive loads, including moderate overloads	Ie	A	110	
AC-20A Connecting and disconnecting under no loads conditions			-	
<b>Rated operating power</b>				
AC-23A Switching of motor loads or other highly inductive loads 3 phase - 3 pole	230V	Kw (A)	30 (95)	
	400V	Kw (A)	45 (85)	
	500V	Kw (A)	30 (40)	
	690V	Kw (A)	-	
AC-23A Switching of motor loads or other highly inductive loads 1 phase - 2 pole	110V	Kw (A)	9 (102)	
	230V	Kw (A)	15 (82)	
AC-3 Squirrel cage motors: starting, switching off motors during running 3 phase - 3 pole	230V	Kw (A)	22 (70)	
	400V	Kw (A)	37 (67)	
	500V	Kw (A)	30 (40)	
	690V	Kw (A)	-	
	AC-3 Squirrel cage motors: starting, switching off motors during running 1 phase - 2 pole	110V	Kw (A)	7,5 (85)
	230V	Kw (A)	11 (60)	
	400V	Kw (A)	-	
AC-4 Squirrel cage motors: starting, plugging, inching	230V	Kw (A)	7,5 (85)	
	400V	Kw (A)	11 (20)	
AC-15 Control of a.c electromagnetic loads	230V	A	-	
	400V	A	-	
Rated breaking capability in AC-23A (cos φ=0,45)	230V	A	760	
	400V	A	680	
<b>Short circuit protection</b>				
Rated short time withstand current	Icw	A	1500	
Rated short-circuit make capacity	Icm	A	3000	
Rated conditional short-circuit current		kA	15	
With fuses class gG	500V	A	125	
<b>Technical data UL/CSA</b>				
Rated operating voltage	Ue	UL/CSA V	600/600	
General use current	Ie	UL/CSA A	125/100	
Short circuit rating @600Vac		Arms	-	
Fuse size (Class RK5, 600Vac, 200kA A.I.C.)		A	-	
<b>Rated operating power</b>				
1 phase - 2 pole	120V	Hp (A)	10 (100)/5	
	240V	Hp (A)	15 (68)/12	
3 phase - 3 pole	200V	Hp (A)	20 (62,1)/-	
	240V	Hp (A)	25 (68)/24	
	480V	Hp (A)	40(52)/50	
	600V	Hp (A)	50(52)/65	
<b>Mechanical characteristics</b>				
Mechanical life		Cycles x 10 <sup>6</sup> Cycles/hr	0,3 120	
<b>Connection according to IEC 9471-1 and EN 50947-1 (Power contacts)</b>				
Connecting capability	With flexible wires	Min-Max	mm <sup>2</sup>	10-25
		Min-Max	AWG	10-3
Connection terminal screw dimensions	With solid wires	Min-Max	mm <sup>2</sup>	10-25
			Type	M8
Screw tightening torque		Nm		2,8
<b>Protection degree IEC 529 EN 60529</b>				
Terminals		IP		00
<b>Ambient conditions</b>				
Operating ambient temperature		°C		-25 ÷ +55
Storage ambient temperature		°C		-30 ÷ +70
Withstand to constant humid according to IEC 60068				2-78
Withstand to cyclic humid according to IEC 60068				2-30