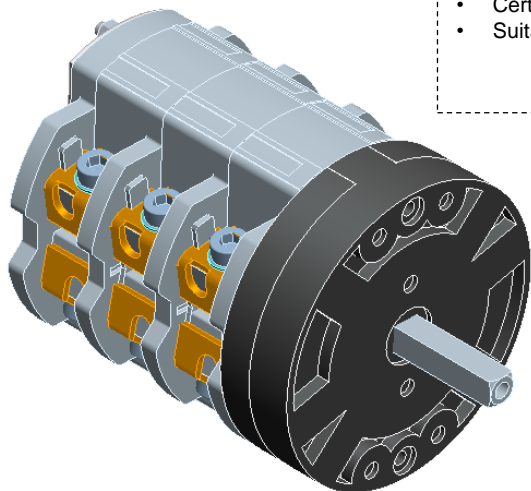


**Cod. CA1000004PL4**



(purely indicative picture)



**Standard and Approvals**

- Switch according to IEC/EN 60947-3
- Certified UL60947-4-1A and CAN/CSA C22.2 No. 60947-4-1-07
- Suitable as Manual Motor Controller



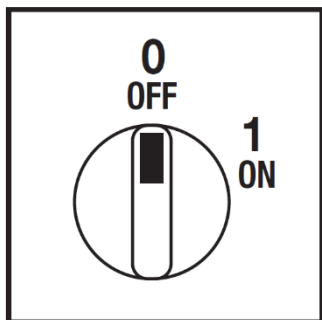
**Technical characteristics**

- ON-OFF switch 4 pole
- IP00 Protection degree
- Rated operational current Ie: 115A (AC-21A)
- Rated thermal current Ith: 115A
- Rated insulation voltage Ui: 690V
- Panel mounting
- Switching angle: 60°
- Self-extinguishing thermosetting/thermoplastic class V2 housing
- Assembled with metal shaft and threaded stud bolts to ensure maximum operating reliability
- Positive opening double break contacts, made of silver and alloy

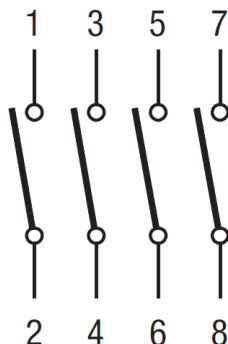
**Technical characteristics: Plate and knob**

- Transparent plate 130x130mm and black knob
- IP40 Protection degree
- Fixing with 4 screws at 30x90mm

**Positions**



**Electrical diagram**



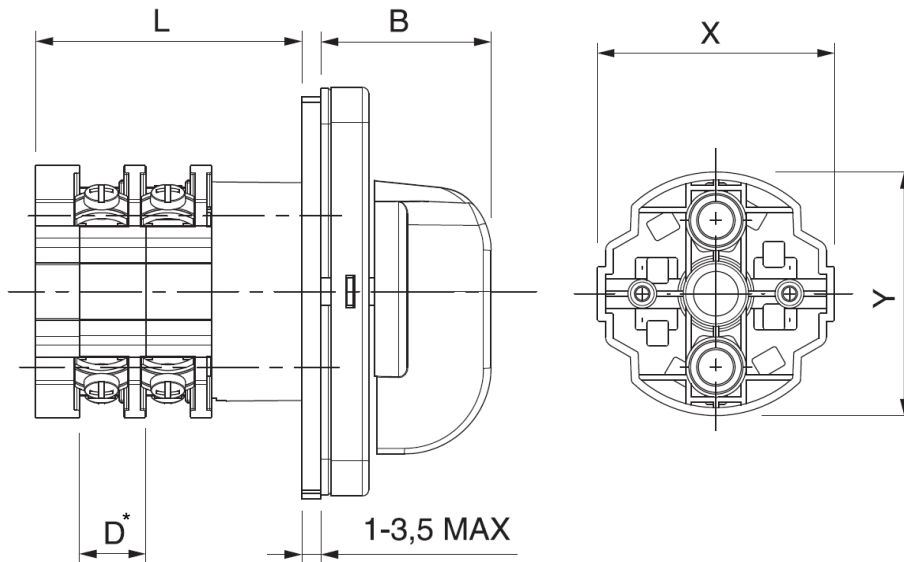
**Electrical function**

	<b>0</b>					CR	60°
	<b>1</b>	X	X	X	X	CA	
Contact		1	3	5	7	CQ	
Element		<b>1</b>		<b>2</b>		Angle	

**Cod. CA1000004PL4**

Measures in mm (in)

**Dimensions**

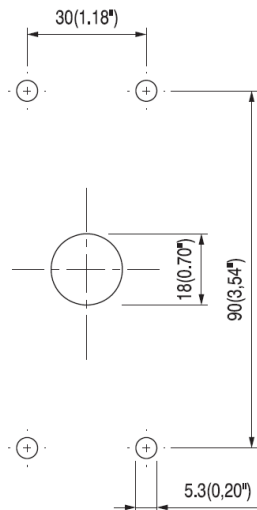


Handle	B
PL3	44 (1,73")
PL4	62 (2,44")
PL5	63 (2,48")
PL9	73 (2,87")
3N3-3L3	44 (1,73")
RL6-RK6	39 (1,54")

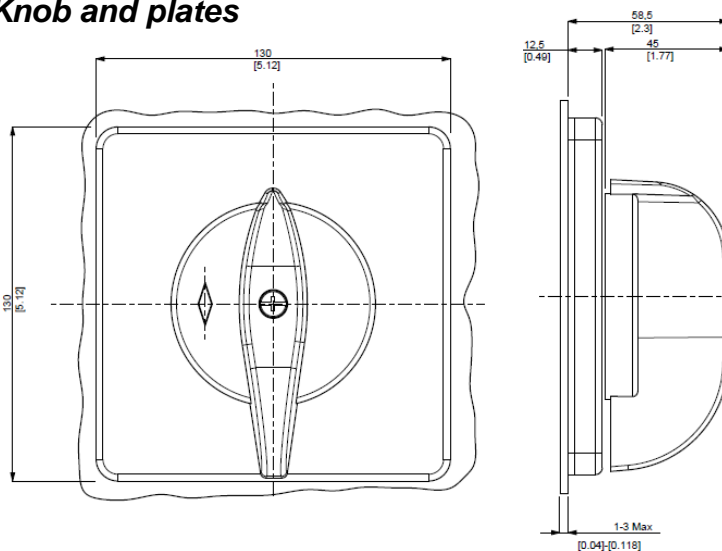
X	Y	D	L	no. of stages					
				1	2	3	4	5	6
-	∅ 110	30		80,8	110,8	140,8	170,8	200,8	230,8
-	∅ (4,33")	(1,18")		(3,18")	(4,36")	(5,54")	(6,72")	(7,91")	(9,09")

\* D – size of the single element

**Drilling template**



**Knob and plates**



### Cod. CA1000004PL4

<b>Technical data IEC 947-3 EN 60947-3</b>				
Rated insulation voltage	Ui	V	690	
Rated operating voltage	Ue	V	690	
Rated impulse withstand voltage	Uimp	kV	6	
Rated thermal current for open switch	Ith	A	115	
Rated thermal current for enclosed switch	Ithe	A	100	
Rated operation frequency		Hz	50/60	
Power dissipation for each pole		W	4,7	
<b>Rated operating current</b>				
AC-21A Switching resistive loads, including moderate overloads	Ie	A	115/110 <sup>5</sup>	
AC-22A Switching of mixed resistive and inductive loads, including moderate overloads	Ie	A	110	
AC-20A Connecting and disconnecting under no loads conditions			-	
<b>Rated operating power</b>				
AC-23A Switching of motor loads or other highly inductive loads 3 phase - 3 pole	230V	Kw (A)	30 (95)	
	400V	Kw (A)	45 ( 85)	
	500V	Kw (A)	30 (40)	
	690V	Kw (A)	-	
AC-23A Switching of motor loads or other highly inductive loads 1 phase - 2 pole	110V	Kw (A)	9 (102)	
	230V	Kw (A)	15 (82)	
AC-3 Squirrel cage motors: starting, swtiching off motors during running 3 phase - 3 pole	230V	Kw (A)	22 (70)	
	400V	Kw (A)	37 (67)	
	500V	Kw (A)	30 (40)	
	690V	Kw (A)	-	
AC-3 Squirrel cage motors: starting, swtiching off motors during running 1 phase - 2 pole	110V	Kw (A)	7,5 (85)	
	230V	Kw (A)	11 (60)	
	400V	Kw (A)	-	
AC-4 Squirrel cage motors: starting, pluggign, inching	230V	Kw (A)	7,5 (85)	
	400V	Kw (A)	11 (20)	
AC-15 Control of a.c electromagnetic loads	230V	A	-	
	400V	A	-	
Rated breaking capability in AC-23A (cos φ=0,45)	230V	A	760	
	400V	A	680	
<b>Short circuit protection</b>				
Rated short time withstand current	Icw	A	1500	
Rated short-circuit make capacity	Icm	A	3000	
Rated conditional short-circuit current	-	kA	15	
With fuses class gG	500V	A	125	
<b>Technical data UL/CSA</b>				
Rated operating voltage	Ue	UL/CSA V	600/600	
General use current	Ie	UL/CSA A	125/100	
Short circuit rating @600Vac		Arms	-	
Fuse size (Class RK5, 600Vac, 200kA A.I.C.)		A	-	
<b>Rated operating power</b>				
1 phase - 2 pole	120V	Hp (A)	10 (100)/5	
	240V	Hp (A)	15 (68)/12	
3 phase - 3 pole	200V	Hp (A)	20 (62,1)/-	
	240V	Hp (A)	25 (68)/24	
	480V	Hp (A)	40(52)/50	
	600V	Hp (A)	50(52)/65	
<b>Mechanical characteristics</b>				
Mechanical life		Cycles x 10 <sup>6</sup>	0,3	
		Cycles/hr	120	
<b>Connection according to IEC 9471-1 and EN 50947-1 (Power contacts)</b>				
Connecting capability	With flexible wires	Min-Max	mm <sup>2</sup>	10-25
		Min-Max	AWG	10-3
	With solid wires	Min-Max	mm <sup>2</sup>	10-25
Connection terminal screw dimensions		Type	M8	
Screw tightening torque		Nm	2,8	
<b>Protection degree IEC 529 EN 60529</b>				
Terminals		IP	00	
<b>Ambient conditions</b>				
Operating ambient temperature		°C	-25 ÷ +55	
Storage ambient temperature		°C	-30 ÷ +70	
Withstand to constant humid according to IEC 60068			2-78	
Withstand to cyclic humid according to IEC 60068			2-30	

Notes:  
<sup>5</sup> = at 500V