

Cod. CA0400008PL2

Standard and Approvals



- Switch according to IEC/EN 60947-3
- Certified UL60947-4-1A and CAN/CSA C22.2 No. 60947-4-1-07
- Suitable as Manual Motor Controller



Technical characteristics: Body

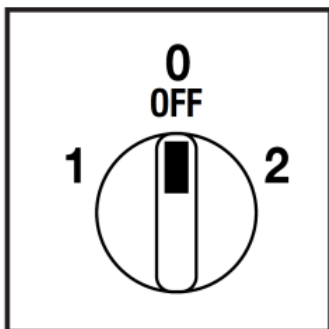
- Reversing switch 3 pole
- IP00 Protection degree
- Rated operational current Ie: 40A
- Rated thermal current Ith: 50A
- Rated insulation voltage Ui: 690V
- Rear Mounting
- Fixing with 2 screws at 28mm vertical
- Switching angle: 60°
- Class V2 self-extinguishing thermoplastic housing
- Assembled with metal shaft and threaded stud bolts to ensure maximum operating reliability
- Positive opening double break contacts, silver alloy made.



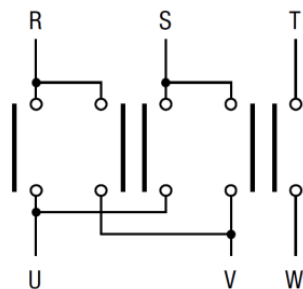
Technical characteristics: Knob

- Transparent plate 75,5x75,5mm and black knob
- Fixing with 2 screws at 28mm vertical
- IP40 protection degree

Positions



Electrical diagram



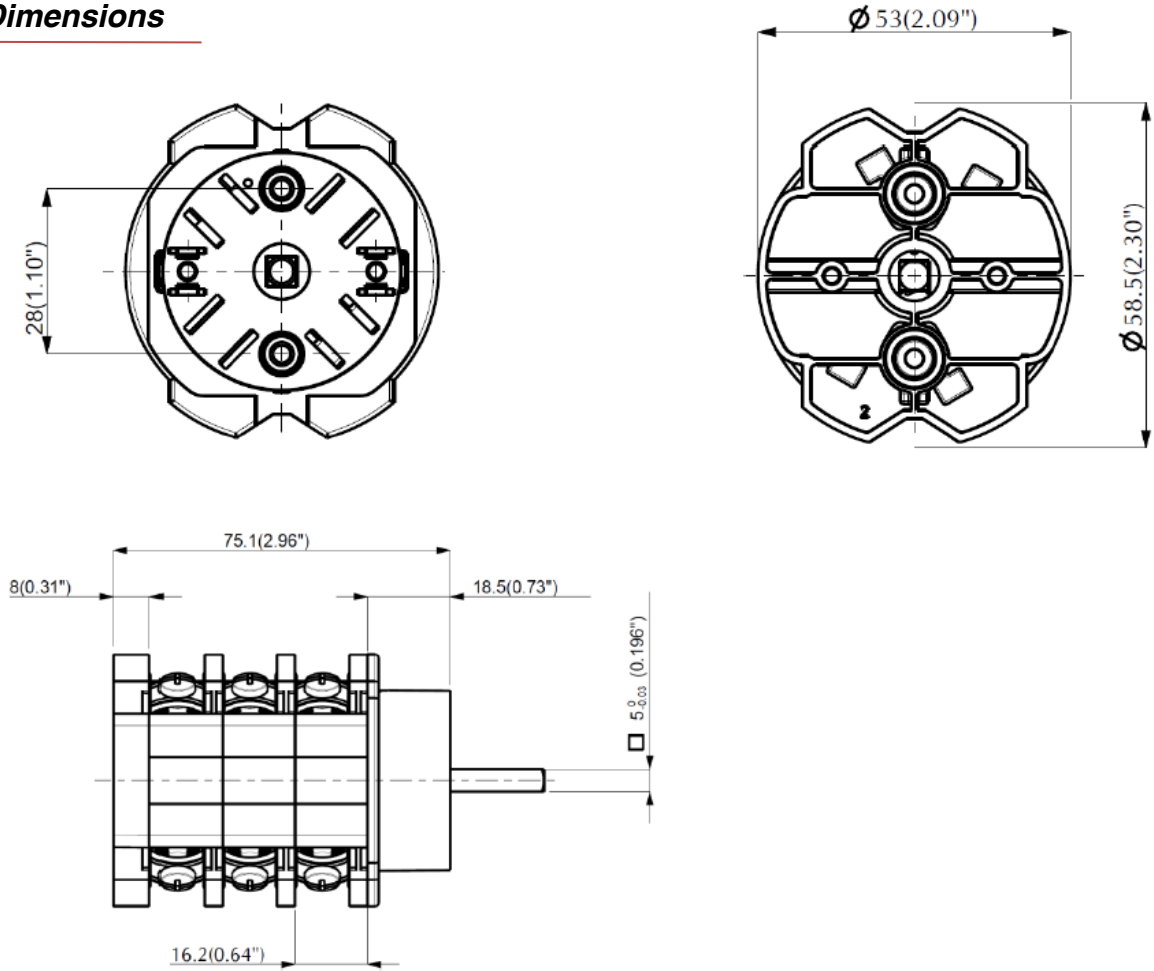
Electrical function

| | | | | | | | | | | | | | |
|----------|----------|----------|---|---|----------|---|---|----------|---|---|----|----|----|
| | 2 | | X | X | | X | | | | | | | |
| | 0 | | | | | | | | | | | | |
| | 1 | X | | | | X | X | | | | | | |
| Contatto | | 1 | 2 | 3 | 4 | 5 | 6 | 7 | 8 | 9 | 10 | 11 | 12 |
| Elemento | | 1 | | | 2 | | | 3 | | | | | |

Cod. CA0400008PL2

measures in mm (in)

Dimensions



Drilling templates

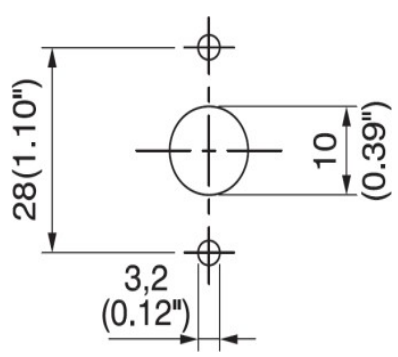
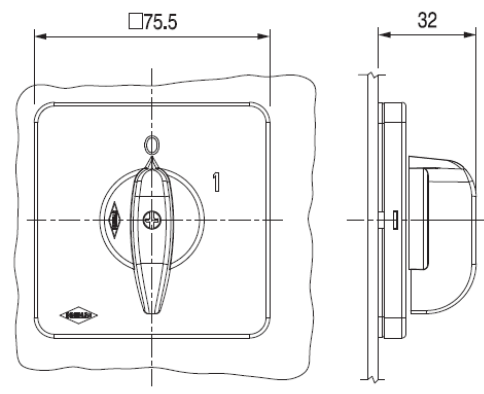


Plate & Knob



© 2017 Copyright Bremas Ersce. Subject to change without notice and errors excepted. Data reported in this paper are carefully checked and represent typical values of series production. The descriptions of the device and its applications, contexts of use, details of external controls, information on installation and operation are provided to the best of our knowledge. In any case, this does not mean that the features described may derive legal responsibilities that extend beyond the "Terms and Conditions" of Bremas Ersce. The customer / user is not absolved from the obligation to examine our information and recommendations and the relevant technical regulations before using the products for their own purposes.

Cod. CA0400008PL2

| Technical data IEC 947-3 EN 60947-3 | | | | |
|---|---------------------|--------------------------|-----------------|----------|
| Rated insulation voltage | Ui | V | 690 | |
| Rated operating voltage | Ue | V | 690 | |
| Rated impulse withstand voltage | Uimp | kV | 6 | |
| Rated thermal current for open switch | Ith | A | 50 | |
| Rated thermal current for enclosed switch | Ithe | A | 50 | |
| Rated operation frequency | | Hz | 50/60 | |
| Power dissipation for each pole | | W | 1,3 | |
| Rated operating current | | | | |
| AC-21A Switching resistive loads, including moderate overloads | Ie | A | 40 | |
| AC-22A Switching of mixed resistive and inductive loads, including moderate overloads | Ie | A | 32 | |
| AC-20A Connecting and disconnecting under no loads conditions | | | - | |
| Rated operating power | | | | |
| AC-23A Switching of motor loads or other highly inductive loads 3 phase - 3 pole | 230V | Kw (A) | 10 (32) | |
| | 400V | Kw (A) | 18,5 (30) | |
| | 500V | Kw (A) | 18,5 (27) | |
| | 690V | Kw (A) | 18,5 (19) | |
| AC-23A Switching of motor loads or other highly inductive loads 1 phase - 2 pole | 110V | Kw (A) | 3 (34) | |
| | 230V | Kw (A) | 5,5 (30) | |
| AC-3 Squirrel cage motors: starting, switching off motors during running 3 phase - 3 pole | 230V | Kw (A) | 7,5 (24) | |
| | 400V | Kw (A) | 15 (27) | |
| | 500V | Kw (A) | 15 (22) | |
| | 690V | Kw (A) | 16 (16) | |
| AC-3 Squirrel cage motors: starting, switching off motors during running 1 phase - 2 pole | 110V | Kw (A) | 2,2 (25) | |
| | 230V | Kw (A) | 4,5 (25) | |
| | 400V | Kw (A) | - | |
| AC-4 Squirrel cage motors: starting, pluggign, inching | 230V | Kw (A) | 3 (10) | |
| | 400V | Kw (A) | 5,5 (10) | |
| AC-15 Control of a.c electromagnetic loads | 230V | A | 10 | |
| | 400V | A | 8 | |
| Rated breaking capability in AC-23A (cos φ=0,45) | 230V | A | 256 | |
| | 400V | A | 240 | |
| Short circuit protection | | | | |
| Rated short time withstand current | Icw | A | 500 | |
| Rated short-circuit make capacity | Icm | A | 2000 | |
| Rated conditional short-circuit current | - | kA | 10 | |
| With fuses class gG | 500V | A | 50 | |
| Technical data UL/CSA | | | | |
| Rated operating voltage | Ue | UL/CSA V | 600/600 | |
| General use current | Ie | UL/CSA A | 40/32 | |
| Short circuit rating @600Vac | | Arms | 5000 | |
| Fuse size (Class RK5, 600Vac, 200kA A.I.C.) | | A | 60 | |
| Rated operating power | | | | |
| 1 phase - 2 pole | 120V | Hp (A) | 3 (34) | |
| | 240V | Hp (A) | 5 (28) | |
| 3 phase - 3 pole | 200V | Hp (A) | 7,5 (25,3) | |
| | 240V | Hp (A) | 10 (28) | |
| | 480V | Hp (A) | 15 (21) | |
| | 600V | Hp (A) | 20 (22) | |
| Mechanical characteristics | | | | |
| Panel tickness | Max | mm | 4 | |
| Mechanical life | | Cycles x 10 ⁶ | 1,5 | |
| | | Cycles/hr | 120 | |
| Connection according to IEC 9471-1 and EN 50947-1 | | | | |
| Connecting capability | With flexible wires | Min-Max | mm ² | 2x2,5-10 |
| | | Min-Max | AWG | 14-8 |
| | With solid wires | Min-Max | mm ² | 2x2,5-16 |
| | | | Type | M4 |
| Connection terminal screw dimensions | | Nm | 1,7 | |
| Screw tightening torque | | | | |
| Protection degree IEC 529 EN 60529 | | | | |
| Terminals | | IP | 00 | |
| Ambient conditions | | | | |
| Operating ambient temperature | | °C | -25 ÷ +55 | |
| Storage ambient temprature | | °C | -30 ÷ +70 | |
| Withstand to constant humid according to IEC 60068 | | | 2-78 | |
| Withstand to cyclic humid according to IEC 60068 | | | 2-30 | |