

Cod. CA0250008S31

Standard and Approvals

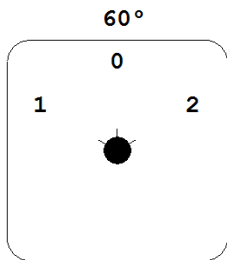
- Switch according to IEC/EN 60947-3
- Certified UL60947-4-1A and CAN/CSA C22.2 No. 60947-4-1-07
- Suitable as Manual Motor Controller



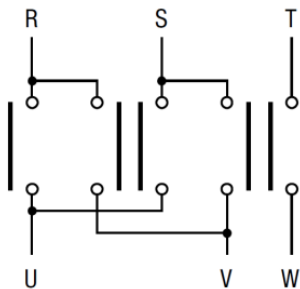
Technical characteristics: Body

- Side-operated ABS box
- IP65 Protection degree
- Rated operational current Ie: 25A
- Rated thermal current Ith: 32A
- Rated insulation voltage Ui: 690V
- Knockout holes: 2xM20 and 2xPg16 / M20
- Switching angle: 45°
- Class V2 self-extinguishing thermoplastic housing
- Assembled with metal shaft and threaded stud bolts to ensure maximum operating reliability
- Positive opening double break contacts, silver alloy made.

Positions



Electrical diagram



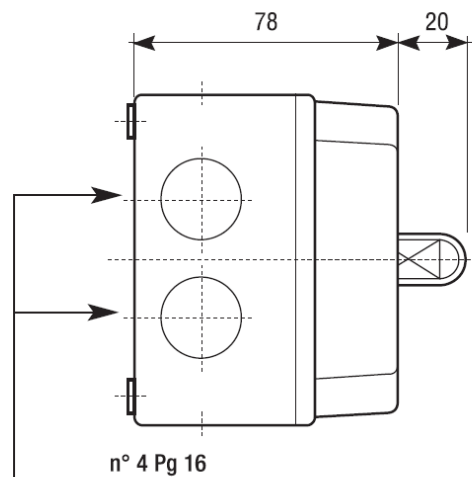
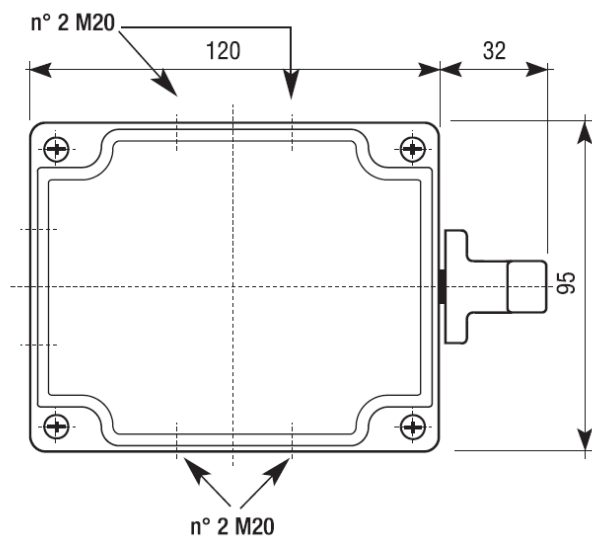
Electrical function

| | | | | | | | | | | | | | |
|----------|----------|----------|----------|----------|---|----------|----------|---|---|----------|----|----|----|
| | 2 | | × | × | | × | | | | | | | |
| | 0 | | | | | | | | | | | | |
| | 1 | × | | | | × | × | | | | | | |
| Contatto | | 1 | 2 | 3 | 4 | 5 | 6 | 7 | 8 | 9 | 10 | 11 | 12 |
| Elemento | | 1 | | | | 2 | | | | 3 | | | |

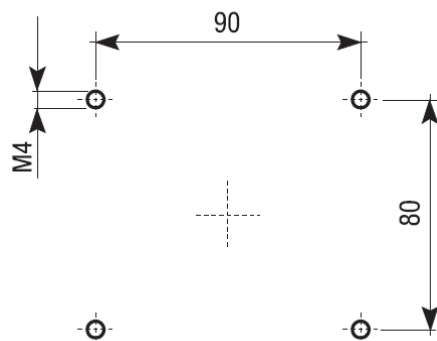
Cod. CA0250008S31

measures in mm (in)

Dimensions



Drilling templates



Cod. CA0250008S31

| | | | |
|---|---------------------|--------------------------|--------------------------|
| Technical data IEC 947-3 EN 60947-3 | | | |
| Rated insulation voltage | Ui | V | 690 |
| Rated operating voltage | Ue | V | 690 |
| Rated impulse withstand voltage | Uimp | kV | 6 |
| Rated thermal current for open switch | Ith | A | 32 |
| Rated thermal current for enclosed switch | Ithe | A | 32 |
| Rated operation frequency | | Hz | 50/60 |
| Power dissipation for each pole | | W | 1 |
| Rated operating current | | | |
| AC-21A Switching resistive loads, including moderate overloads | Ie | A | 25 |
| AC-22A Switching of mixed resistive and inductive loads, including moderate overloads | Ie | A | 20 |
| AC-20A Connecting and disconnecting under no loads conditions | | | - |
| Rated operating power | | | |
| AC-23A Switching of motor loads or other highly inductive loads 3 phase - 3 pole | 230V | Kw (A) | 7,5 (24) |
| | 400V | Kw (A) | 11 (20) |
| | 500V | Kw (A) | 11 (15) |
| | 690V | Kw (A) | 11 (11) |
| AC-23A Switching of motor loads or other highly inductive loads 1 phase - 2 pole | 110V | Kw (A) | 2,2 (25) |
| | 230V | Kw (A) | 3,7 (20) |
| AC-3 Squirrel cage motors: starting, switching off motors during running 3 phase - 3 pole | 230V | Kw (A) | 5,5 (17) |
| | 400V | Kw (A) | 9,5 (16) |
| | 500V | Kw (A) | 9,5 (12,5) |
| | 690V | Kw (A) | 8,5 (10) |
| AC-3 Squirrel cage motors: starting, switching off motors during running 1 phase - 2 pole | 110V | Kw (A) | 1,5 (17) |
| | 230V | Kw (A) | 3 (17) |
| | 400V | Kw (A) | - |
| AC-4 Squirrel cage motors: starting, pluggign, inching | 230V | Kw (A) | 2,2 (17) |
| | 400V | Kw (A) | 3 (5,5) |
| AC-15 Control of a.c electromagnetic loads | 230V | A | 8 |
| | 400V | A | 6 |
| Rated breaking capability in AC-23A (cos φ=0,45) | 230V | A | 192 |
| | 400V | A | 160 |
| Short circuit protection | | | |
| Rated short time withstand current | Icw | A | 400 |
| Rated short-circuit make capacity | Icm | A | 2000 |
| Rated conditional short-circuit current | - | kA | 10 |
| With fuses class gG | 500V | A | 35 |
| Technical data UL/CSA | | | |
| Rated operating voltage | Ue | UL/CSA V | 600/600 |
| General use current | Ie | UL/CSA A | 25/25 |
| Short circuit rating @600Vac | | Arms | 5000 |
| Fuse size (Class RK5, 600Vac, 200kA A.I.C.) | | A | 60 |
| Rated operating power | | | |
| 1 phase - 2 pole | 120V | Hp (A) | 2 (24)/- |
| | 240V | Hp (A) | 3 (17)/6 |
| 3 phase - 3 pole | 200V | Hp (A) | 5 (17,5)/- |
| | 240V | Hp (A) | 7,5 (22)/- |
| | 480V | Hp (A) | 10 (14)/- |
| | 600V | Hp (A) | 10 (11)/15 |
| Mechanical characteristics | | | |
| Panel tickness | Max | mm | 4 |
| Mechanical life | | Cycles x 10 ⁶ | 1,5 |
| | | Cycles/hr | 120 |
| Connection according to IEC 9471-1 and EN 50947-1 | | | |
| Connecting capability | With flexible wires | Min-Max | mm ² 2x2,5-10 |
| | | Min-Max | AWG 14-8 |
| Connection terminal screw dimensions | With solid wires | Min-Max | mm ² 2x2,5-16 |
| | | Type | M4 |
| Screw tightening torque | | Nm | 1,7 |
| Protection degree IEC 529 EN 60529 | | | |
| Terminals | | IP | 00 |
| Ambient conditions | | | |
| Operating ambient temperature | | °C | -25 ÷ +55 |
| Storage ambient temprature | | °C | -30 ÷ +70 |
| Withstand to constant humid according to IEC 60068 | | | 2-78 |
| Withstand to cyclic humid according to IEC 60068 | | | 2-30 |